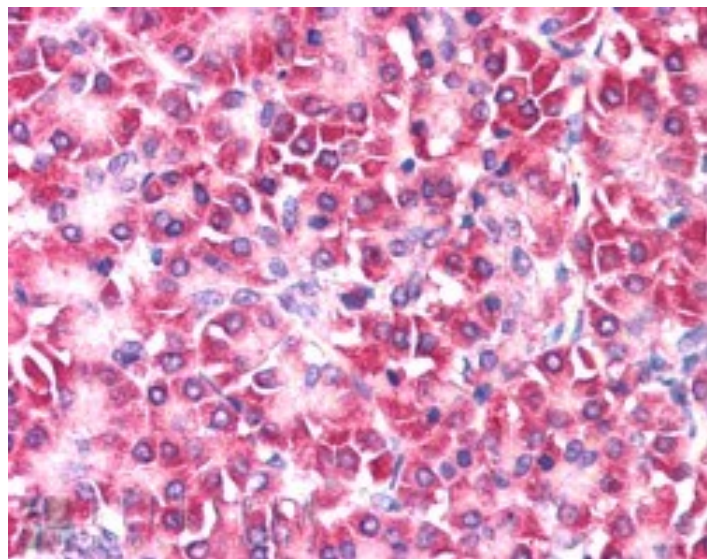


GOAT ANTI-YMER / CCDC50 ANTIBODY

SKU: EB06551



SPECIFICATIONS

Formulation Supplied at 0.5 mg/ml in Tris saline, 0.02% sodium azide, pH7.3 with 0.5% bovine serum albumin.

Unit Size 100 µg

Storage Instructions Aliquot and store at -20°C. Minimize freezing and thawing.

Synonym /

Alias Names Ymer protein|coiled-coil domain containing 50|C3orf6, YMER|C3orf6|chromosome 3 open reading frame 6

Accession ID NP_848018.1; NP_777568.1

Blocking Peptide EBP06551

Immunogen Peptide with sequence CFSKSESSHKGFFHYK, from the internal region of the protein sequence according to NP_848018.1; NP_777568.1.

Product Comments This antibody is expected to recognise both reported isoforms of human Ymer protein.

Peptide Sequence CFSKSESSHKGFFHYK

Purification Method Purified from goat serum by ammonium sulphate precipitation followed by antigen affinity chromatography using the immunizing peptide.

Shipping Instructions	Refrigerated
Predicted Species	Human, Rat, Dog, Cow
Reactive Species	Human
Human Gene ID	152137
Product Grade	https://prod-vector-labs-pimcore-assets.s3.us-east-1.amazonaws.com/assets/products/image/elite_medium.png
IHC Results	In paraffin embedded Human Pancreas shows strong staining in cytoplasm in select acinar cells. Recommended concentration, 5-10µg/ml.
ELISA	
Detection Limit	Antibody detection limit dilution 1:32000.
Western Blot	Preliminary experiments gave an approx 18kDa band in Human Brain lysates after 1µg/ml antibody staining. Please note that currently we cannot find an explanation in the literature for the band we observe given the calculated size of 56.3kDa according to NP_848018.1 and 35.8kDa according to NP_777568.1. The 18kDa band was successfully blocked by incubation with the immunizing peptide. We would appreciate any feedback from people in the field - have any results been reported with other antibodies/lysates? Have any further splice variants/modified forms been reported?
Application Type	Pep-ELISA, IHC

DOCUMENTS

- [Data Sheet](#)

GALLERY IMAGES

