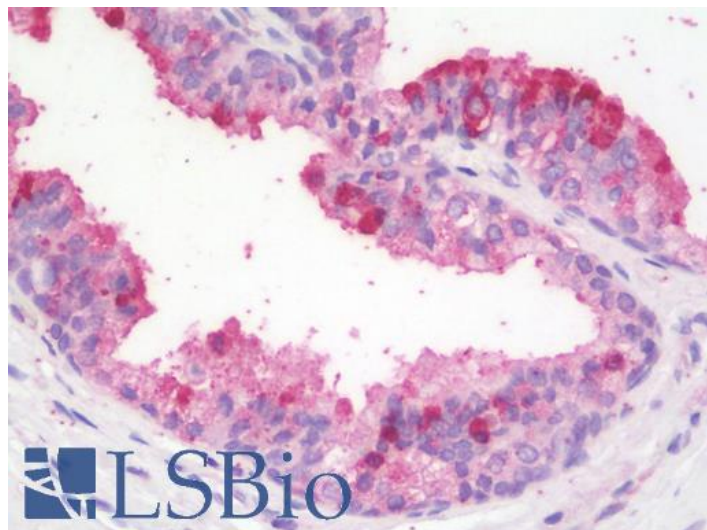




# GOAT ANTI-ZBTB24 (AA232-245) ANTIBODY

SKU: EB11414



## SPECIFICATIONS

**Formulation** Supplied at 0.5 mg/ml in Tris saline, 0.02% sodium azide, pH7.3 with 0.5% bovine serum albumin.

**Unit Size** 100 µg

**Storage Instructions** Aliquot and store at -20°C. Minimize freezing and thawing.

**Synonym / Alias Names** BIF1| ICF2| OTTHUMP00000016968| PATZ2| POZ (BTB) and AT hook containing zinc finger 2| zinc finger and BTB domain containing 24| zinc finger and BTB domain-containing protein 24| zinc finger protein 450| ZNF450|ZBTB24

**Accession ID** NP\_055612.2; NP\_001157785.1

**Blocking Peptide** EBP11414

**Immunogen** Peptide with sequence C-PVEKDENYDPKTED, from the internal region of the protein sequence according to NP\_055612.2; NP\_001157785.1.

**Product Comments** This antibody is expected to recognize both reported isoforms (NP\_055612.2; NP\_001157785.1).

**Peptide Sequence** C-PVEKDENYDPKTED

**Purification Method** Purified from goat serum by ammonium sulphate precipitation followed by antigen affinity chromatography using the immunizing peptide.



<b>Shipping Instructions</b>	Refrigerated
<b>Predicted Species</b>	Human
<b>Reactive Species</b>	Human
<b>Human Gene ID</b>	9841
<b>Product Grade</b>	<a href="https://prod-vector-labs-pimcore-assets.s3.us-east-1.amazonaws.com/assets/products/image/elite_medium.png">https://prod-vector-labs-pimcore-assets.s3.us-east-1.amazonaws.com/assets/products/image/elite_medium.png</a>
<b>IHC Results</b>	Paraffin embedded Human Prostate. Recommended concentration: 5µg/ml.
<b>ELISA</b>	
<b>Detection Limit</b>	Antibody detection limit dilution 1:8000.
<b>Western Blot</b>	Approx 80kDa band observed in lysates of cell line Daudi (calculated MW of 78.3kDa according to NP_055612.2). Recommended concentration: 1-3µg/ml. Primary incubation was 1 hour.
<b>Application Type</b>	Pep-ELISA, WB, IHC

## DOCUMENTS

- [Data Sheet](#)

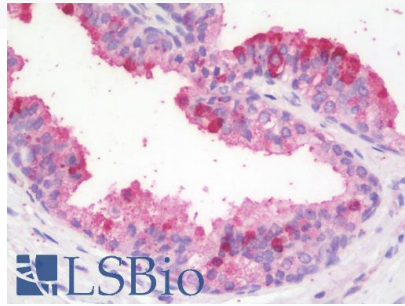
## GALLERY IMAGES



[www.everestbiotech.com](http://www.everestbiotech.com)

Email: [customerservice@vectorlabs.com](mailto:customerservice@vectorlabs.com)

Telephone: [\(650\) 697-3600](tel:(650)697-3600)



Goat Anti-ZBTB24 (aa232-245) Antibody

<https://everestbiotech.com/products/goat-anti-zbtb24-aa232-245-antibody/>