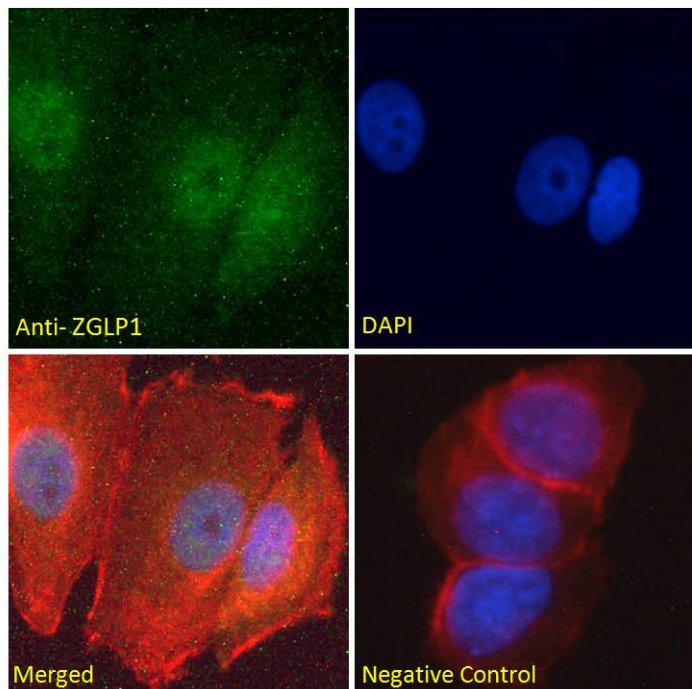


# GOAT ANTI-ZGLP1 ANTIBODY

SKU: EB09920



## SPECIFICATIONS

**Formulation** Supplied at 0.5 mg/ml in Tris saline, 0.02% sodium azide, pH7.3 with 0.5% bovine serum albumin.

**Unit Size** 100 µg

**Storage Instructions** Aliquot and store at -20°C. Minimize freezing and thawing.

**Synonym /**

**Alias Names** FLJ39511|FLJ39703|GATA like protein 1|GATA like protein-1|GLP1|GLP-1|zinc finger, GATA-like protein 1|ZGLP1

**Usage Summary** **Immunofluorescence:** Strong expression of the protein seen in the nucleus of MCF7 and U2OS cells. Recommended concentration: 10µg/ml. **Flow Cytometry:** Flow cytometric analysis of K562 cells. Recommended concentration: 10ug/ml.

**Accession ID** NP\_001096637.1

**Blocking Peptide** EBP09920

<b>Immunogen</b>	Peptide with sequence C-EGVTLKFQIKPDS, from the internal region of the protein sequence according to NP_001096637.1.
<b>Peptide Sequence</b>	C-EGVTLKFQIKPDS
<b>Purification Method</b>	Purified from goat serum by ammonium sulphate precipitation followed by antigen affinity chromatography using the immunizing peptide.
<b>Shipping Instructions</b>	Refrigerated
<b>Predicted Species</b>	Human, Mouse, Cow
<b>Reactive Species</b>	Human
<b>Human Gene ID</b>	100125288
<b>Mouse Gene ID</b>	100009600
<b>Product Grade</b>	<a href="https://prod-vector-labs-pimcore-assets.s3.us-east-1.amazonaws.com/assets/products/image/elite_medium.png">https://prod-vector-labs-pimcore-assets.s3.us-east-1.amazonaws.com/assets/products/image/elite_medium.png</a>
<b>ELISA Detection Limit</b>	Antibody detection limit dilution 1:8000.
<b>Western Blot</b>	Preliminary experiments gave an approx 35kDa band in Human Testis lysates after 1µg/ml antibody staining. Please note that currently we cannot find an explanation in the literature for the band, given the calculated size of 29.6kDa according to NP_001096637.1. The 35kDa band was successfully blocked by incubation with the immunizing peptide.
<b>Application Type</b>	Pep-ELISA, IF, FC

## DOCUMENTS

- [Data Sheet](#)

## GALLERY IMAGES

