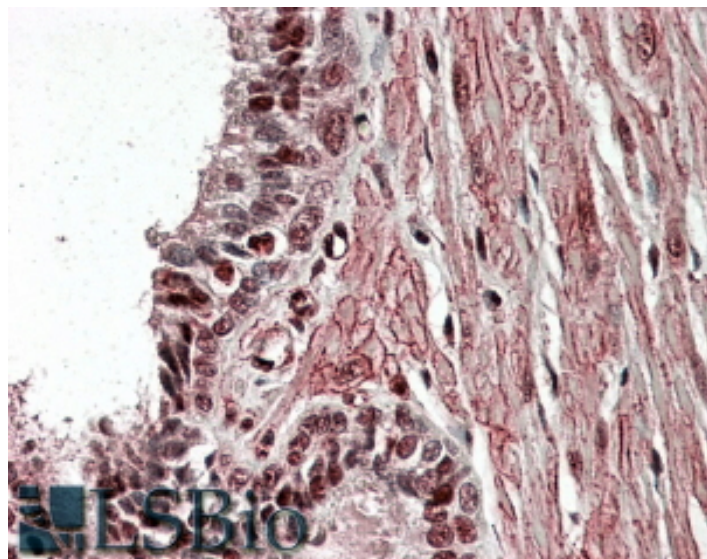


# GOAT ANTI-ZNF217 ANTIBODY

**SKU:** EB07302



## SPECIFICATIONS

<b>Formulation</b>	Supplied at 0.5 mg/ml in Tris saline, 0.02% sodium azide, pH7.3 with 0.5% bovine serum albumin.
<b>Unit Size</b>	100 µg
<b>Storage Instructions</b>	Aliquot and store at -20°C. Minimize freezing and thawing.
<b>Synonym / Alias Names</b>	ZABC1 zinc finger protein 217 ZNF217
<b>Usage Summary</b>	<p><strong>Immunofluorescence:</strong> Strong expression of the protein seen in the nuclei of MCF7 cells.</p> <p>Recommended concentration: 10µg/ml.</p> <p><strong>Flow Cytometry:</strong> Flow cytometric analysis of MCF7 cells. Recommended concentration: 10ug/ml.</p>
<b>Accession ID</b>	NP_006517.1
<b>Blocking Peptide</b>	EBP07302
<b>Immunogen</b>	Peptide with sequence C-KNAADDSADKVKNK, from the internal region of the protein sequence according to NP_006517.1.
<b>Peptide Sequence</b>	C-KNAADDSADKVKNK
<b>Purification Method</b>	Purified from goat serum by ammonium sulphate precipitation followed by antigen affinity chromatography using the immunizing peptide.

<b>Shipping Instructions</b>	Refrigerated
<b>Predicted Species</b>	Human
<b>Reactive Species</b>	Human
<b>Human Gene ID</b>	7764
<b>Product Grade</b>	<a href="https://prod-vector-labs-pimcore-assets.s3.us-east-1.amazonaws.com/assets/products/image/elite_plus_medium.png">https://prod-vector-labs-pimcore-assets.s3.us-east-1.amazonaws.com/assets/products/image/elite_plus_medium.png</a>
<b>IHC Results</b>	In paraffin embedded Human Prostate shows nuclear staining in select secretory cells. Recommended concentration: 3-6µg/ml.
<b>ELISA</b>	
<b>Detection Limit</b>	Antibody detection limit dilution 1:16000.
<b>Application Type</b>	Pep-ELISA, IHC, IF, FC

## DOCUMENTS

- [Data Sheet](#)

## GALLERY IMAGES

