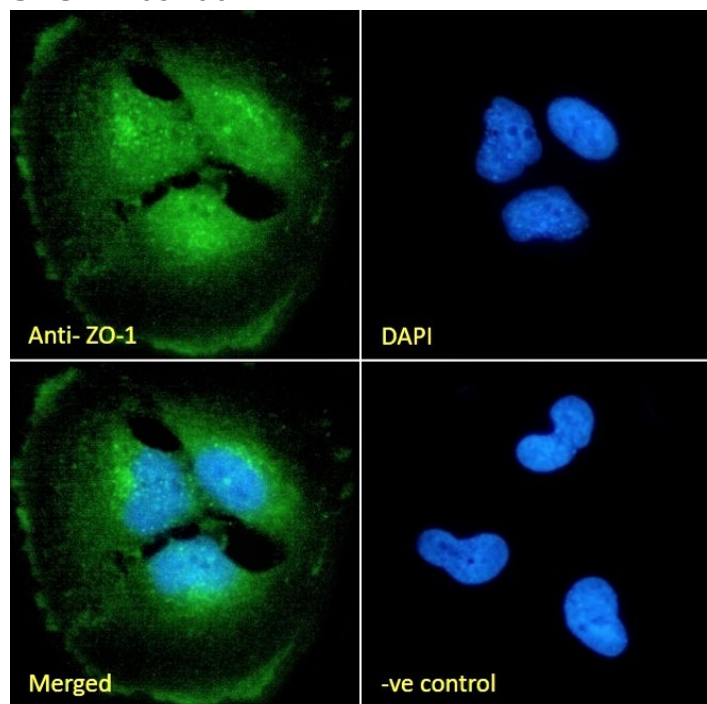


# GOAT ANTI-ZO-1 ANTIBODY

SKU: EB09206



## SPECIFICATIONS

**Formulation** Supplied at 0.5 mg/ml in Tris saline, 0.02% sodium azide, pH7.3 with 0.5% bovine serum albumin.

**Unit Size** 100 µg

**Storage Instructions** Aliquot and store at -20°C. Minimize freezing and thawing.

**Synonym / Alias Names** zonula occludens 1 protein|zona occludens 1|tight junction protein ZO-1|tight junction protein 1|OTTHUMP00000174520|ZO-1|MGC133289|DKFZp686M05161|tight junction protein 1 (zona occludens 1)|TJP1

**Usage Summary** <strong>Immunofluorescence:</strong> Strong expression of the protein seen in the membrane, cytoplasm and nuclei of U251 cells. Recommended concentration: 10µg/ml.

**Accession ID** NP\_003248.3; NP\_783297.2

**Blocking Peptide** EBP09206

**Immunogen** Peptide with sequence C-PKPTSQNFSEHDKT, from the internal region of the protein sequence according to NP\_003248.3; NP\_783297.2.

|                              |   |
|------------------------------|---|
| <b>Product Comments</b>      | This antibody is expected to recognize both reported isoforms (NP_003248.3; NP_783297.2)  |
| <b>Peptide Sequence</b>      | C-PKPTSQNFSEHDKT  |
| <b>Purification Method</b>   | Purified from goat serum by ammonium sulphate precipitation followed by antigen affinity chromatography using the immunizing peptide.   |
| <b>Shipping Instructions</b> | Refrigerated  |
| <b>Predicted Species</b>     | Human   |
| <b>Reactive Species</b>      | Human   |
| <b>Human Gene ID</b>         | 7082  |
| <b>Product Grade</b>         | <a href="https://prod-vector-labs-pimcore-assets.s3.us-east-1.amazonaws.com/assets/products/image/elite_medium.png">https://prod-vector-labs-pimcore-assets.s3.us-east-1.amazonaws.com/assets/products/image/elite_medium.png</a> |
| <b>ELISA Detection Limit</b> | Antibody detection limit dilution 1:64000.  |
| <b>Application Type</b>      | Pep-ELISA, IF   |

## DOCUMENTS

- [Data Sheet](#)

## GALLERY IMAGES

