



International Office

Everest Biotech Ltd

Vector Laboratories, Inc.
6737 Mowry Ave
Newark, CA 94560
United States

Customer Service:

customerservice@vectorlabs.com

Technical Service:

technical@vectorlabs.com

Tel: +1 (800) 227-6666

www.everestbiotech.com

**Research Use Only. Not for
diagnostic or therapeutic use.**

EB06696 - Goat Anti-Lamin A / Lamin A/C Antibody

Size: 100µg specific antibody in 200µl



Target Protein

Principal Names: LMNA, FPL, LFP, EMD2, FPLD, HGPS, LDP1, LMN1, LMNC, PRO1, CMD1A, CMT2B1, LGMD1B, lamin A, lamin A/C, lamin A/C, 70 kDa lamin, progeria 1 (Hutchinson-Gilford type), Charcot-Marie-Tooth disease, axonal, type 2B1

Official Symbol: LMNA

Accession Number(s): NP_733821.1; NP_733822.1

Human GeneID(s): [4000](#)

Important Comments: This antibody is expected to recognise isoforms 1 and 3 (NP_733821.1; NP_733822.1).

Immunogen

Peptide with sequence PRTQSPQNCSIM, from the C Terminus of the protein sequence according to NP_733821.1; NP_733822.1.

Please note the [peptide](#) is available for sale.

Purification and Storage

Purified from goat serum by ammonium sulphate precipitation followed by antigen affinity chromatography using the immunizing peptide.

Supplied at 0.5 mg/ml in Tris saline, 0.02% sodium azide, pH7.3 with 0.5% bovine serum albumin.

Aliquot and store at -20°C. Minimize freezing and thawing.

Applications Tested

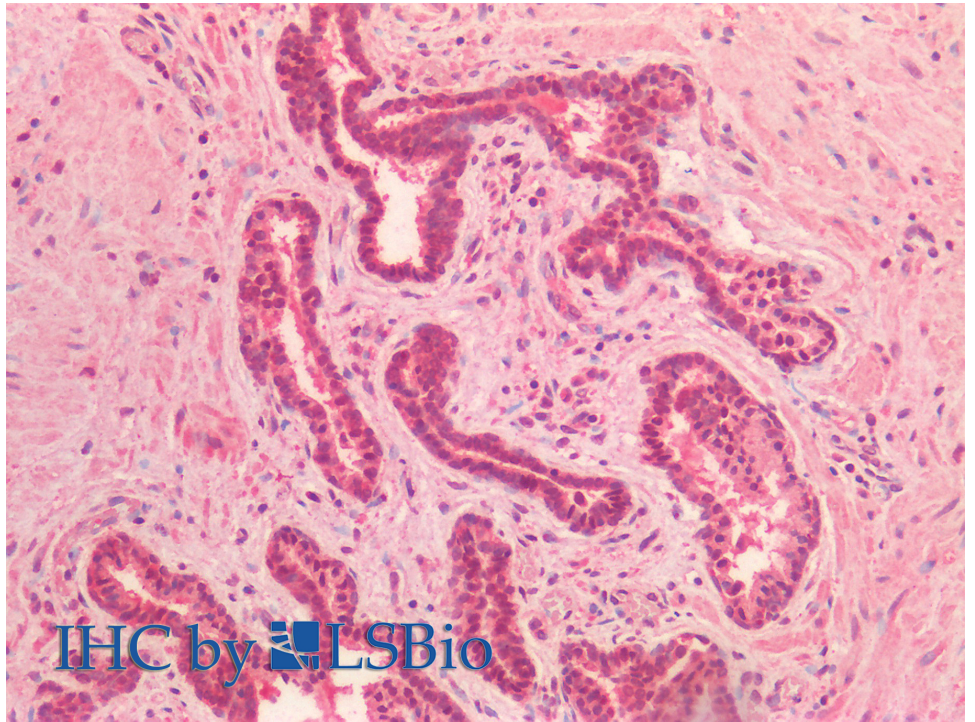
Peptide ELISA: antibody detection limit dilution 1:32000.

IHC: Paraffin embedded Human Prostate. Recommended concentration: 5µg/ml.

Species Reactivity

Tested: Human

Expected from sequence similarity: Human, Mouse, Rat



EB06696 (5µg/ml) staining of paraffin embedded Human Prostate. Steamed antigen retrieval with citrate buffer pH 6, AP-staining.