



UK Office

Everest Biotech Ltd

Cherwell Innovation Centre
77 Heyford Park
Upper Heyford
Oxfordshire
OX25 5HD
UK

Enquiries:

info@everestbiotech.com

Sales:

sales@everestbiotech.com

Tech support:

support@everestbiotech.com

Tel: +44 (0)1869 238326

www.everestbiotech.com

**Research Use Only. Not for
diagnostic or therapeutic use.**

EB06985 - Goat Anti-RSK2 Antibody

Size: 100µg specific antibody in 200µl



Target Protein

Principal Names: RPS6KA3, ribosomal protein S6 kinase, 90kDa, polypeptide 3, HGNC:10432, HU-3, ISPK-1, MAPKAPK1B, MRX19, RSK2, S6K-alpha3, p90-RSK2, pp90RSK2, RP11-393H10.3, CLS, RSK, insulin-stimulated protein kinase 1, mental retardation, X-linked 19, ribosomal protein S6 kinase, 90kD, polypeptide 3

Official Symbol: RPS6KA3

Accession Number(s): NP_004577.1

Human GeneID(s): [6197](#)

Immunogen

Peptide with sequence C-DDESQAMQTVGVH, from the internal region of the protein sequence according to NP_004577.1.

Purification and Storage

Purified from goat serum by ammonium sulphate precipitation followed by antigen affinity chromatography using the immunizing peptide.

Supplied at 0.5 mg/ml in Tris saline, 0.02% sodium azide, pH7.3 with 0.5% bovine serum albumin.

Aliquot and store at -20°C. Minimize freezing and thawing.

Applications Tested

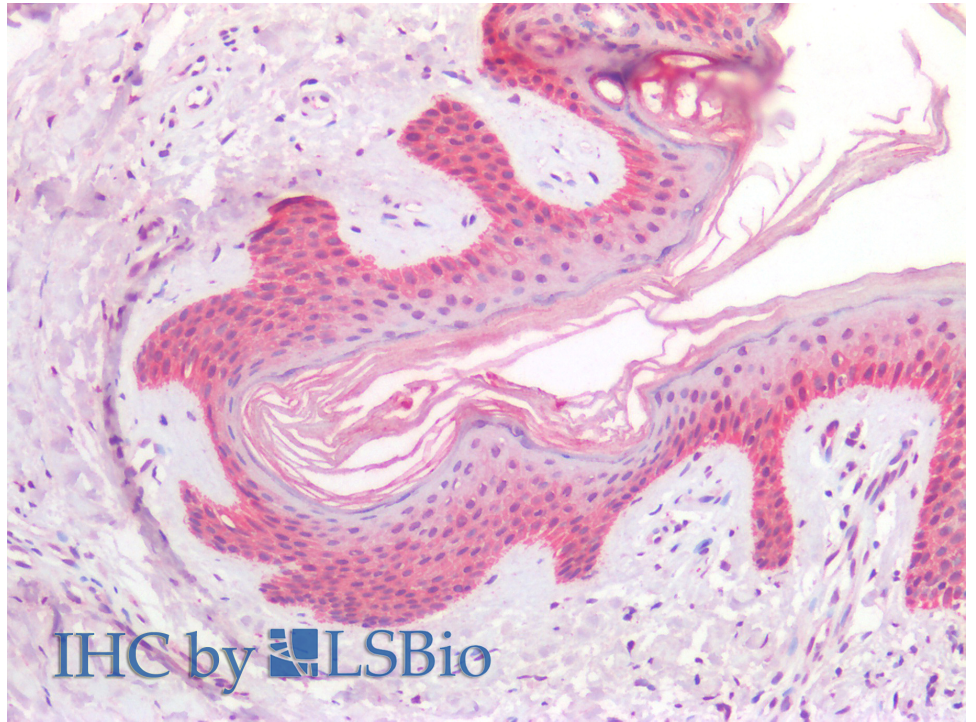
Peptide ELISA: antibody detection limit dilution 1:64000.

IHC: Paraffin embedded Human Skin. Recommended concentration: 5µg/ml.

Species Reactivity

Tested: Human

Expected from sequence similarity: Human, Mouse, Rat



EB06985 (5µg/ml) staining of paraffin embedded Human Skin. Steamed antigen retrieval with citrate buffer pH 6, AP-staining.