



## International Office

### Everest Biotech Ltd

Vector Laboratories, Inc.  
6737 Mowry Ave  
Newark, CA 94560  
United States

Customer Service:

[customerservice@vectorlabs.com](mailto:customerservice@vectorlabs.com)

Technical Service:

[technical@vectorlabs.com](mailto:technical@vectorlabs.com)

Tel: +1 (800) 227-6666

[www.everestbiotech.com](http://www.everestbiotech.com)

**Research Use Only. Not for  
diagnostic or therapeutic use.**

## EB07061 - Goat Anti-14-3-3 sigma / Stratifin Antibody

Size: 100µg specific antibody in 200µl



### Target Protein

**Principal Names:** 14-3-3sigma, stratifin, HGNC:10773, SFN, YWHAS

**Official Symbol:** SFN

**Accession Number(s):** NP\_006133.1

**Human GeneID(s):** [2810](#)

**Non-Human GeneID(s):** 55948 (mouse), 313017 (rat)

### Immunogen

Peptide with sequence C-DLHTLSEDSYKDST, from the internal region of the protein sequence according to NP\_006133.1.

Please note the [peptide](#) is available for sale.

### Purification and Storage

Purified from goat serum by ammonium sulphate precipitation followed by antigen affinity chromatography using the immunizing peptide.

Supplied at 0.5 mg/ml in Tris saline, 0.02% sodium azide, pH7.3 with 0.5% bovine serum albumin.

Aliquot and store at -20°C. Minimize freezing and thawing.

### Applications Tested

**Peptide ELISA:** antibody detection limit dilution 1:16000.

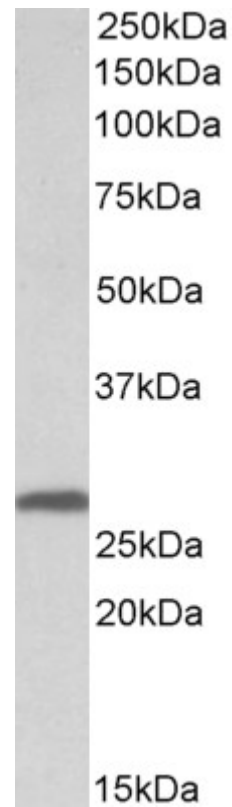
**Western blot:** Approx 26-28kDa band observed in Human, Mouse and Rat Skin lysates and in lysates of cell lines A431 and U2OS (calculated MW of 27.8kDa according to Human NP\_006133.1, Mouse NP\_061224.2 and Rat XP\_003750096.1). Recommended concentration: 0.03-0.1µg/ml. Primary incubation 1 hour at room temperature.

**IHC:** In paraffin embedded Human Skin shows strong nuclear staining in selected cells of the basal layer. Recommended concentration, 2-4µg/ml.

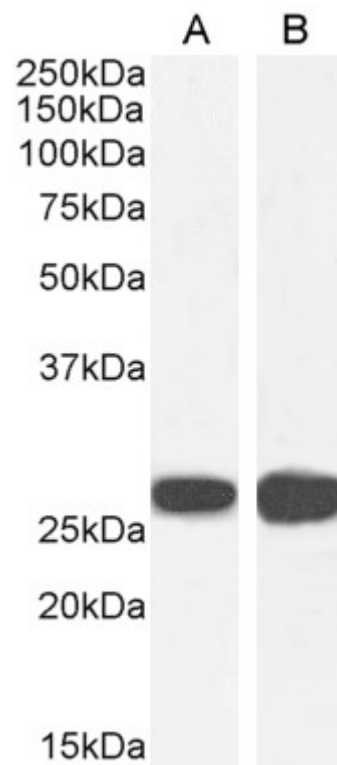
### Species Reactivity

**Tested:** Human, Mouse, Rat

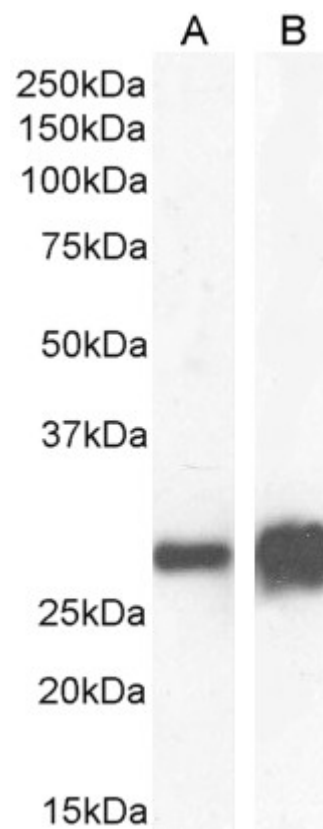
**Expected from sequence similarity:** Human, Mouse, Rat, Dog, Pig



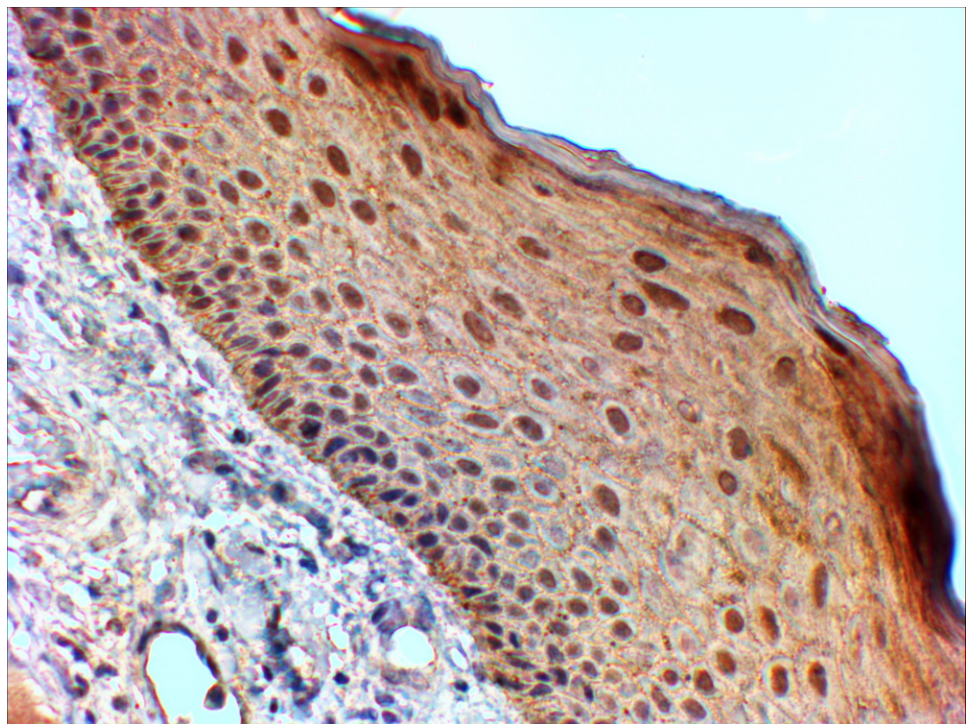
EB07061 (0.03µg/ml) staining of Human Skin lysate (35µg protein in RIPA buffer). Primary incubation was 1 hour. Detected by chemiluminescence.



EB07061 (0.03µg/ml) staining of A431 (A) and U2OS (B) cell lysate (35µg protein in RIPA buffer). Detected by chemiluminescence.



EB07061 (0.03 $\mu$ g/ml) staining of Mouse (A) and Rat (B) Skin lysate (35 $\mu$ g protein in RIPA buffer). Detected by chemiluminescence.



EB07061 (2 $\mu$ g/ml) staining of paraffin embedded Human Skin. Steamed antigen retrieval with Tris/EDTA buffer pH 9, HRP-staining.