

## UK Office

### Everest Biotech Ltd

Cherwell Innovation Centre  
77 Heyford Park  
Upper Heyford  
Oxfordshire  
OX25 5HD  
UK

Enquiries:

[info@everestbiotech.com](mailto:info@everestbiotech.com)

Sales:

[sales@everestbiotech.com](mailto:sales@everestbiotech.com)

Tech support:

[support@everestbiotech.com](mailto:support@everestbiotech.com)

Tel: +44 (0)1869 238326

[www.everestbiotech.com](http://www.everestbiotech.com)

**Research Use Only. Not for  
diagnostic or therapeutic use.**

## EB06230 - Goat Anti-4E-T / EIF4ENIF1 Antibody

Size: 100µg specific antibody in 200µl



### Target Protein

**Principal Names:** EIF4ENIF1, 4E-T, Clast4, FLJ21601, 2610509L04Rik, eukaryotic translation initiation factor 4E nuclear import factor 1, eIF4E-transporter, FLJ26551, OTTHUMP00000063276

**Official Symbol:** EIF4ENIF1

**Accession Number(s):** NP\_062817.2; NP\_001157974.1

**Human GeneID(s):** [56478](#)

**Non-Human GeneID(s):** 74203 (mouse)

**Important Comments:** This antibody is expected to recognise isoform 1 (NP\_062817.2) and isoform b (NP\_001157974.1). Reported variants represent identical protein (NP\_062817.2; NP\_001157973.1).

### Immunogen

Peptide with sequence C-AKVISVDELEYRQ, from the C Terminus of the protein sequence according to NP\_062817.2; NP\_001157974.1.

Please note the [peptide](#) is available for sale.

### Purification and Storage

Purified from goat serum by ammonium sulphate precipitation followed by antigen affinity chromatography using the immunizing peptide.

Supplied at 0.5 mg/ml in Tris saline, 0.02% sodium azide, pH7.3 with 0.5% bovine serum albumin.

Aliquot and store at -20°C. Minimize freezing and thawing.

### Applications Tested

**Peptide ELISA:** antibody detection limit dilution 1:32000.

**Western blot:** Approx 140-150kDa band observed in 293 lysates (predicted size of approx. 108kDa according to NP\_062817.1, however our observation agrees with that of Dostie et al (see below) ). Recommended for use at 0.25-0.5µg/ml

**IHC:** In paraffin embedded Human Pancreas shows strong staining of cytoplasm in acinar cells-. Recommended concentration, 5-10µg/ml.

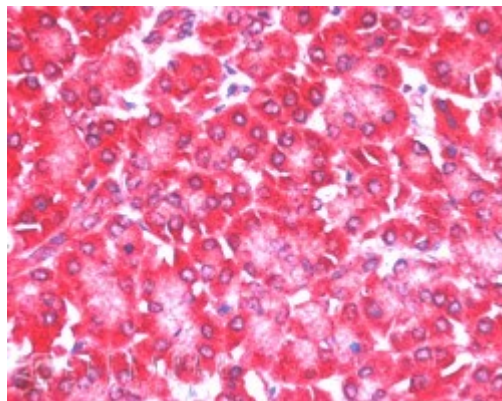
### Species Reactivity

**Tested:** Human

**Expected from sequence similarity:** Human, Mouse, Rat, Dog, Pig, Cow



EB06230 staining (0.25 $\mu$ g/ml) of 293 lysate (RIPA buffer, 35 $\mu$ g total protein per lane). Primary incubated for 1 hour. Detected by western blot using chemiluminescence.



EB06230 (5 $\mu$ g/ml) staining of paraffin embedded Human Pancreas. Steamed antigen retrieval with citrate buffer pH 6, AP-staining.