



UK Office

Everest Biotech Ltd

Cherwell Innovation Centre
77 Heyford Park
Upper Heyford
Oxfordshire
OX25 5HD
UK

Enquiries:

info@everestbiotech.com

Sales:

sales@everestbiotech.com

Tech support:

support@everestbiotech.com

Tel: +44 (0)1869 238326

www.everestbiotech.com

**Research Use Only. Not for
diagnostic or therapeutic use.**

EB11740 - Goat Anti-5HT2A Receptor (aa296-309) Antibody

Size: 100µg specific antibody in 200µl



Target Protein

Principal Names: 5-HT-2, 5-HT2 receptor, 5-HT2A, 5-HT-2A, 5-hydroxytryptamine (serotonin) receptor 2A, 5-hydroxytryptamine receptor 2A, HTR2, HTR2A, OTTHUMP00000018378, serotonin 5-HT-2A receptor, serotonin receptor 2A

Official Symbol: HTR2A

Accession Number(s): NP_000612.1; NP_001159419.1

Human GeneID(s): [3356](#)

Important Comments: This antibody is expected to recognize both reported isoforms (NP_000612.1; NP_001159419.1).

Immunogen

Peptide with sequence C-QRSIHREPGSYTGR, from the internal region of the protein sequence according to NP_000612.1; NP_001159419.1.

Please note the [peptide](#) is available for sale.

Purification and Storage

Purified from goat serum by ammonium sulphate precipitation followed by antigen affinity chromatography using the immunizing peptide.

Supplied at 0.5 mg/ml in Tris saline, 0.02% sodium azide, pH7.3 with 0.5% bovine serum albumin.

Aliquot and store at -20°C. Minimize freezing and thawing.

Applications Tested

Peptide ELISA: antibody detection limit dilution 1:128000.

IHC: Paraffin embedded Human Brain (Cerebellum). Recommended concentration: 2µg/ml.

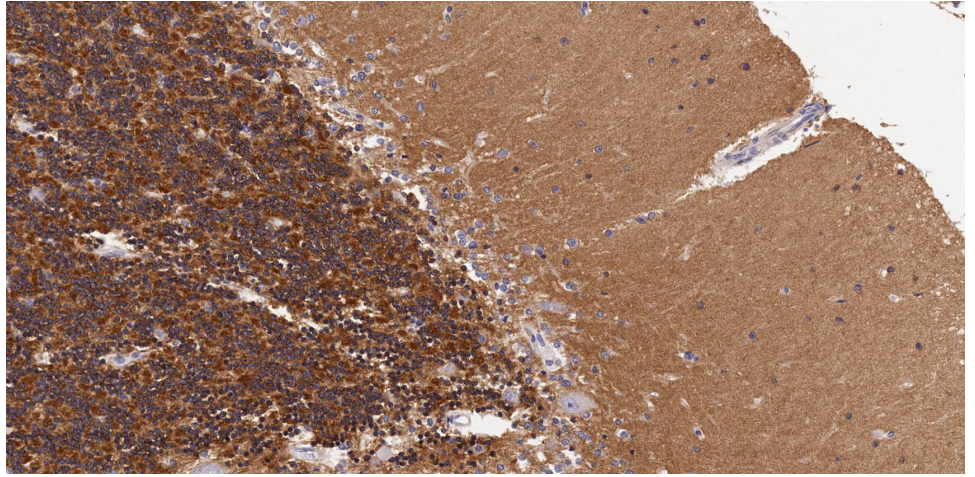
Immunofluorescence: Strong expression of the protein seen in the cytoplasm of A549 cells. Recommended concentration: 10µg/ml.

Flow Cytometry: Flow cytometric analysis of A549 cells. Recommended concentration: 10ug/ml.

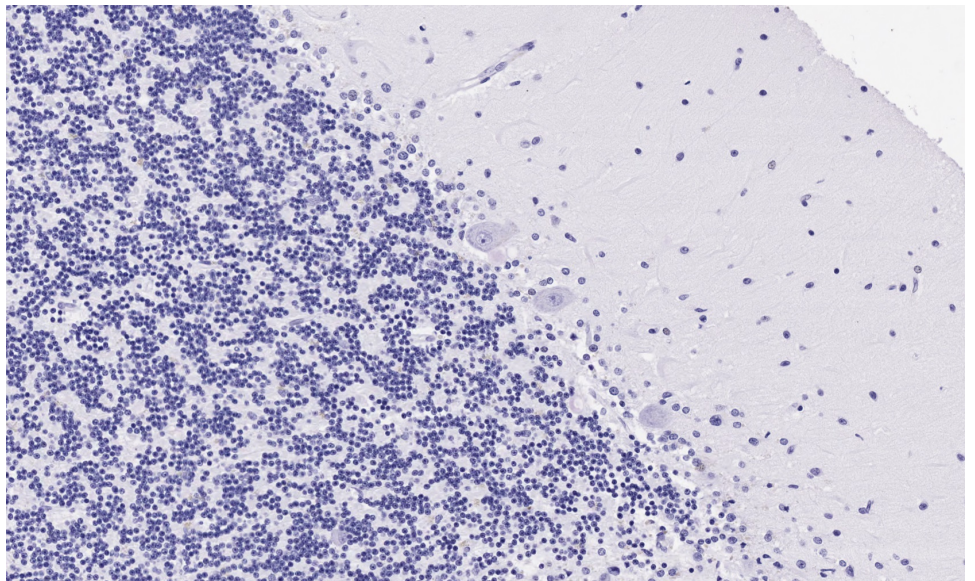
Species Reactivity

Tested: Human

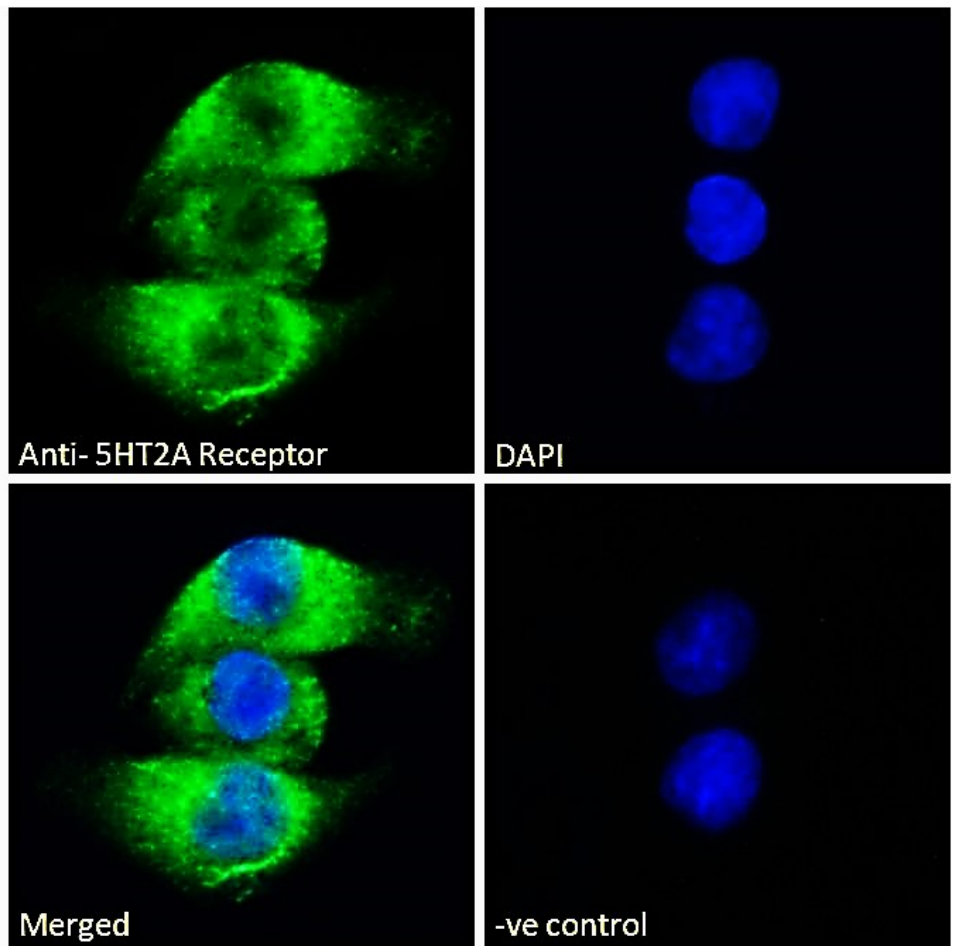
Expected from sequence similarity: Human



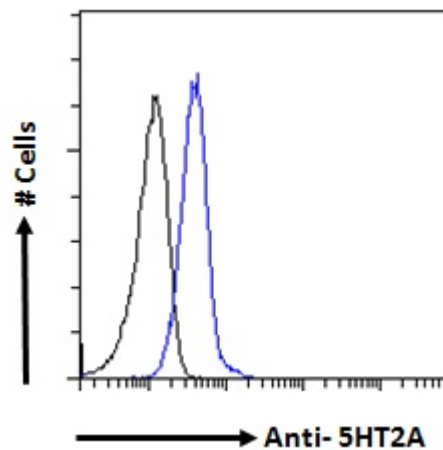
EB11740 (2 μ g/ml) staining of paraffin embedded Human Cerebellum. Microwaved antigen retrieval with citrate buffer pH 6, HRP-staining.



EB11740 Negative Control showing staining of paraffin embedded Human Cerebellum, with no primary antibody.



EB11740 Immunofluorescence analysis of paraformaldehyde fixed A549 cells, permeabilized with 0.15% Triton. Primary incubation 1hr (10ug/ml) followed by Alexa Fluor 488 secondary antibody (2ug/ml), showing cytoplasmic staining. The nuclear stain is DAPI (blue). Negative control: Unimmunized goat IgG (10ug/ml) followed by Alexa Fluor 488 secondary antibody (2ug/ml).



EB11740 Flow cytometric analysis of paraformaldehyde fixed A549 cells (blue line), permeabilized with 0.5% Triton. Primary incubation 1hr (10ug/ml) followed by Alexa Fluor 488 secondary antibody (1ug/ml). IgG control: Unimmunized goat IgG (black line) followed by Alexa Fluor 488 secondary antibody.