



UK Office

Everest Biotech Ltd

Cherwell Innovation Centre
77 Heyford Park
Upper Heyford
Oxfordshire
OX25 5HD
UK

Enquiries:

info@everestbiotech.com

Sales:

sales@everestbiotech.com

Tech support:

support@everestbiotech.com

Tel: +44 (0)1869 238326

Fax: +44 (0)1869 238327

US Office

Everest Biotech c/o Abcore

405 Maple Street, Suite A106
Ramona,
CA 92065
USA

Inquiries:

info@everestbiotech.com

Sales:

usasales@everestbiotech.com

Tech support:

support@everestbiotech.com

Tel: 888-320-4628 (toll-free)

Fax: 888-841-9041

www.everestbiotech.com

**Research Use Only. Not for
diagnostic or therapeutic use.**

EB09579 - Goat Anti-TICAM1 Antibody

Size: 100µg specific antibody in 200µl



Target Protein

Principal Names: TICAM1, toll-like receptor adaptor molecule 1, MGC35334, PRVTIRB, TICAM-1, TRIF, TIR domain containing adaptor inducing interferon-beta

Official Symbol: TICAM1

Accession Number(s): NP_891549.1

Human GeneID(s): [148022](#)

Immunogen

Peptide with sequence C-HARADEHIALRVREK, from the internal region of the protein sequence according to NP_891549.1.

Please note the [peptide](#) is available for sale.

Purification and Storage

Purified from goat serum by ammonium sulphate precipitation followed by antigen affinity chromatography using the immunizing peptide.

Supplied at 0.5 mg/ml in Tris saline, 0.02% sodium azide, pH7.3 with 0.5% bovine serum albumin.

Aliquot and store at -20°C. Minimize freezing and thawing.

Applications Tested

Peptide ELISA: antibody detection limit dilution 1:64000.

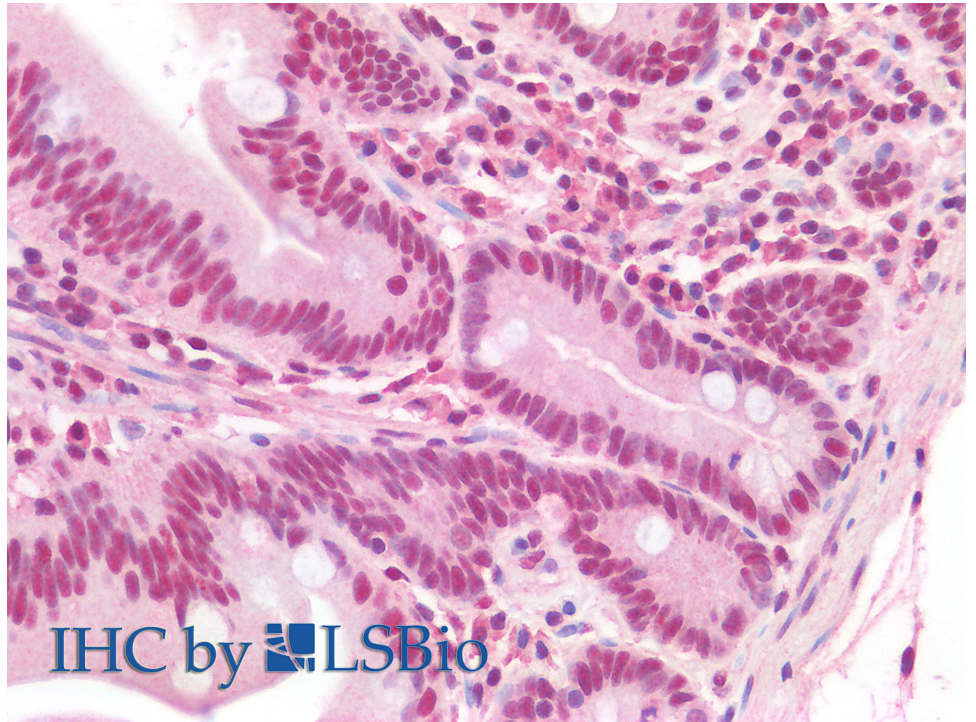
IHC: Paraffin embedded Human Small Intestine. Recommended concentration: 2.5µg/ml.

Flow Cytometry: Flow cytometric analysis of K562 cells. Recommended concentration: 10ug/ml.

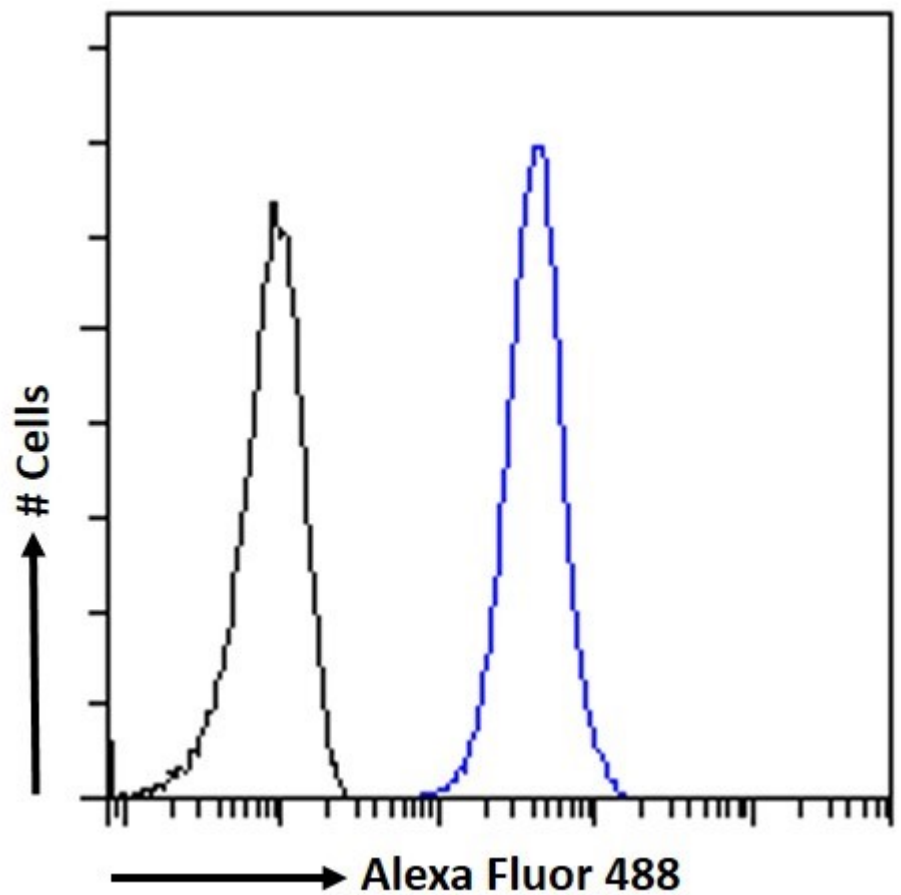
Species Reactivity

Tested: Human

Expected from sequence similarity: Human



EB09579 (2.5µg/ml) staining of paraffin embedded Human Small Intestine. Steamed antigen retrieval with citrate buffer Ph 6, AP-staining.



EB09579 Flow cytometric analysis of paraformaldehyde fixed K562 cells (blue line), permeabilized with 0.5% Triton. Primary incubation 1hr (10ug/ml) followed by Alexa Fluor 488 secondary antibody (1ug/ml). IgG control: Unimmunized goat IgG (black line) followed by Alexa Fluor 488 secondary antibody.