

## International Office

### Everest Biotech Ltd

Vector Laboratories, Inc.  
6737 Mowry Ave  
Newark, CA 94560  
United States

Customer Service:

[customerservice@vectorlabs.com](mailto:customerservice@vectorlabs.com)

Technical Service:

[technical@vectorlabs.com](mailto:technical@vectorlabs.com)

Tel: +1 (800) 227-6666

[www.everestbiotech.com](http://www.everestbiotech.com)

**Research Use Only. Not for  
diagnostic or therapeutic use.**

## EB08613 - Goat Anti-ABCA2 Antibody

Size: 100µg specific antibody in 200µl



### Target Protein

**Principal Names:** ABCA2, ATP-binding cassette, sub-family A (ABC1), member 2, ABC2, MGC129761, ATP-binding cassette, sub-family A, member 2, OTTHUMP00000064733

**Official Symbol:** ABCA2

**Accession Number(s):** NP\_001597.2; NP\_997698.1

**Human GeneID(s):** [20](#)

**Non-Human GeneID(s):** 11305 (mouse), 79248 (rat)

**Important Comments:** This antibody is expected to recognize both reported isoforms (NP\_001597.2; NP\_997698.1).

### Immunogen

Peptide with sequence C-KKQSDNLEQQETEP, from the internal region of the protein sequence according to NP\_001597.2; NP\_997698.1.

Please note the [peptide](#) is available for sale.

### Purification and Storage

Purified from goat serum by ammonium sulphate precipitation followed by antigen affinity chromatography using the immunizing peptide.

Supplied at 0.5 mg/ml in Tris saline, 0.02% sodium azide, pH7.3 with 0.5% bovine serum albumin.

Aliquot and store at -20°C. Minimize freezing and thawing.

### Applications Tested

**Peptide ELISA:** antibody detection limit dilution 1:2000.

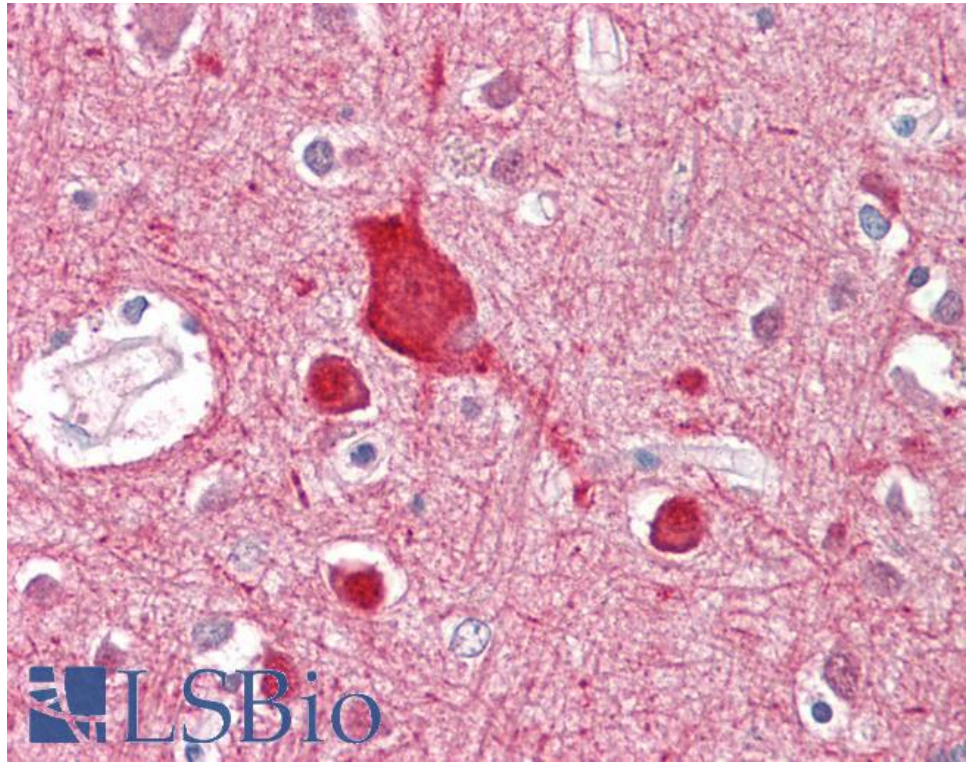
**Western blot:** Preliminary experiments gave an approx 35kDa band in Human Brain (Amygdala, Frontal Cortex, Hippocampus and Substantia Nigra) lysates after 0.3µg/ml antibody staining. Please note that currently we cannot find an explanation in the literature for the band we observe given the calculated size of 270kDa according to NP\_001597.2 and of 273kDa according to .NP\_997698.1. The 35kDa band was successfully blocked by incubation with the immunizing peptide.

**IHC:** Paraffin embedded Human Brain (Cortex). Recommended concentration: 3.75µg/ml.

### Species Reactivity

**Tested:** Human

**Expected from sequence similarity:** Human, Mouse, Rat



EB08613 (3.75µg/ml) staining of paraffin embedded Human Cortex. Steamed antigen retrieval with citrate buffer pH 6, AP-staining.