

UK Office

Everest Biotech Ltd

Cherwell Innovation Centre
77 Heyford Park
Upper Heyford
Oxfordshire
OX25 5HD
UK

Enquiries:

info@everestbiotech.com

Sales:

sales@everestbiotech.com

Tech support:

support@everestbiotech.com

Tel: +44 (0)1869 238326

www.everestbiotech.com

**Research Use Only. Not for
diagnostic or therapeutic use.**

EB08737 - Goat Anti-ABCE1 / RNase L Antibody

Size: 100µg specific antibody in 200µl



Target Protein

Principal Names: ABCE1, ATP-binding cassette, sub-family E (OABP), member 1, ABC38, OABP, RLI, RNASEL1, RNASELI, RNS4I, ATP-binding cassette, sub-family E, member 1, RNase L inhibitor, ribonuclease L (2\1,5\1-oligoisoadenylate synthetase-dependent) inhibitor

Official Symbol: ABCE1

Accession Number(s): NP_002931.2; NP_001035809.1

Human GeneID(s): [6059](#)

Non-Human GeneID(s): 24015 (mouse), 361390 (rat)

Immunogen

Peptide with sequence NHDKCKPKKCRQEC, from the N Terminus of the protein sequence according to NP_002931.2; NP_001035809.1.

Please note the [peptide](#) is available for sale.

Purification and Storage

Purified from goat serum by ammonium sulphate precipitation followed by antigen affinity chromatography using the immunizing peptide.

Supplied at 0.5 mg/ml in Tris saline, 0.02% sodium azide, pH7.3 with 0.5% bovine serum albumin.

Aliquot and store at -20°C. Minimize freezing and thawing.

Applications Tested

Peptide ELISA: antibody detection limit dilution 1:32000.

Western blot: Approx 70kDa band observed in Human Tonsil lysates and in preliminary testing of Human Ovary lysate (calculated MW of 67.3kDa according to Human NP_002931.2). Recommended concentration: 1-2ug/ml. Primary incubation 1 hour at room temperature.

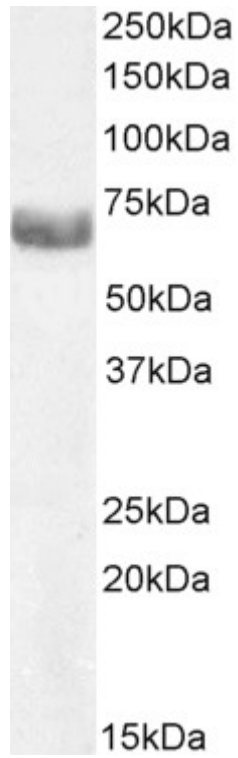
Immunofluorescence: Strong expression of the protein seen in the cytoplasm of A431 and U2OS cells. Recommended concentration: 10µg/ml.

Flow Cytometry: Flow cytometric analysis of A431 cells. Recommended concentration: 10ug/ml.

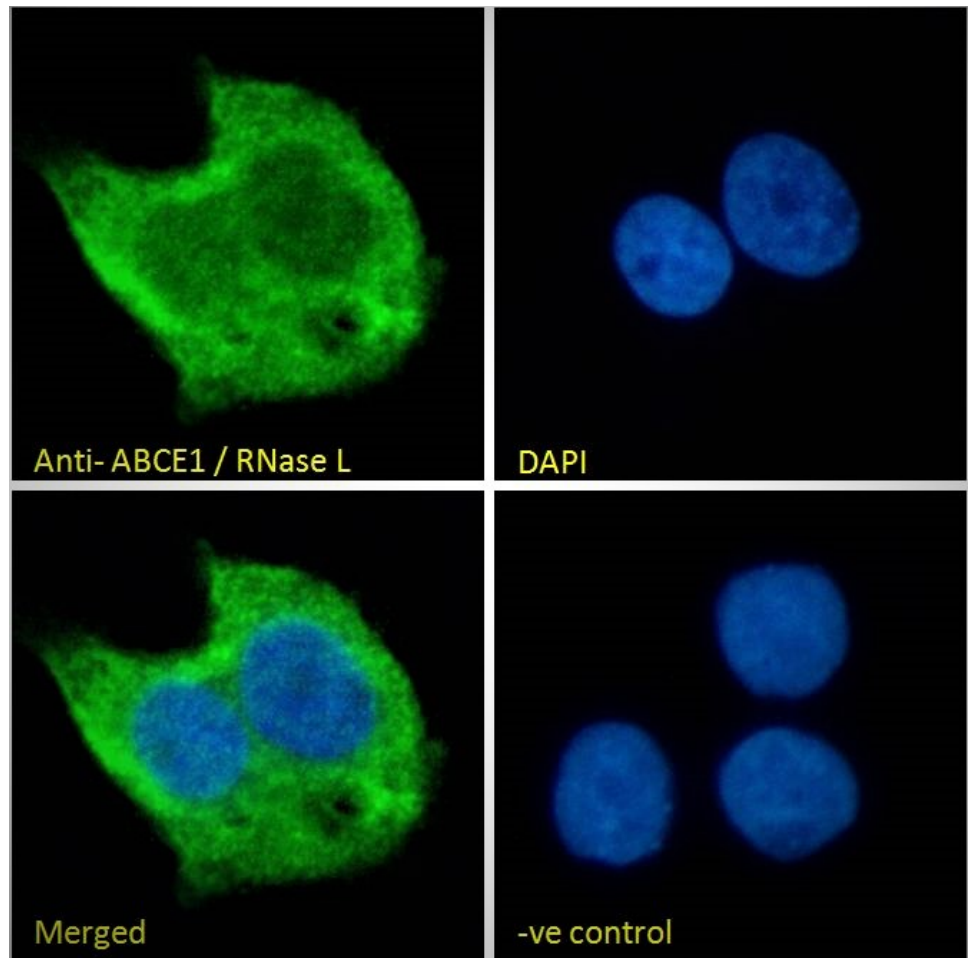
Species Reactivity

Tested: Human

Expected from sequence similarity: Human, Mouse, Rat, Dog, Cow

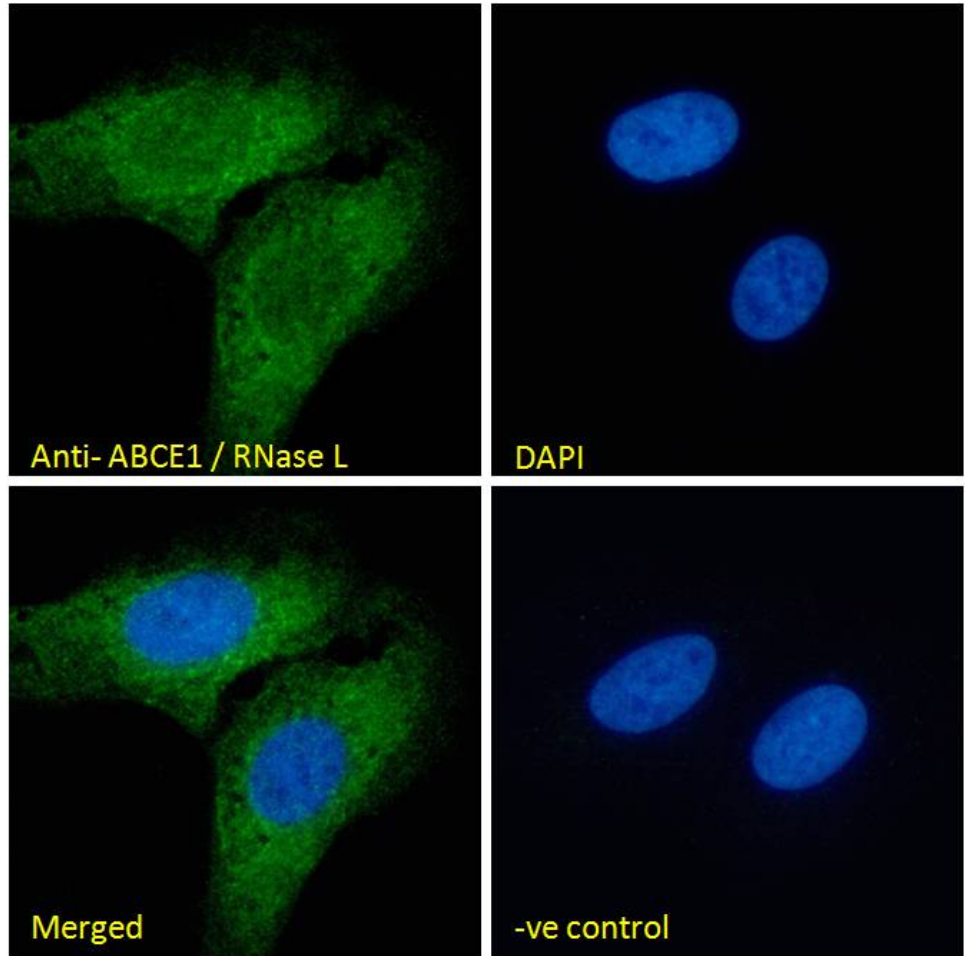


EB08737 (2µg/ml) staining of Human Tonsil lysate (35µg protein in RIPA buffer). Detected by chemiluminescence.

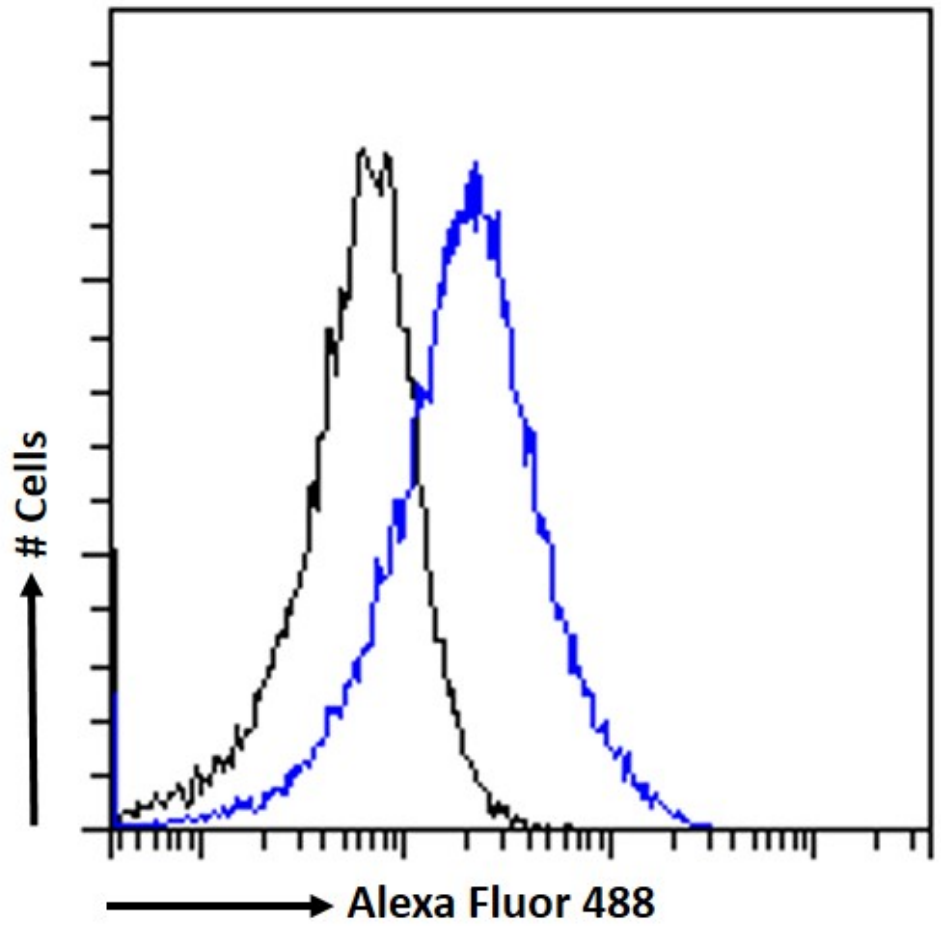


EB08737 Immunofluorescence analysis of paraformaldehyde fixed A431 cells, permeabilized with 0.15% Triton. Primary incubation 1hr (10ug/ml) followed by Alexa Fluor 488 secondary antibody (2ug/ml), showing cytoplasmic

staining. The nuclear stain is DAPI (blue). Negative control: Unimmunized goat IgG (10ug/ml) followed by Alexa Fluor 488 secondary antibody (2ug/ml).



EB08737 Immunofluorescence analysis of paraformaldehyde fixed U2OS cells, permeabilized with 0.15% Triton. Primary incubation 1hr (10ug/ml) followed by Alexa Fluor 488 secondary antibody (2ug/ml), showing cytoplasmic staining. The nuclear stain is DAPI (blue). Negative control: Unimmunized goat IgG (10ug/ml) followed by Alexa Fluor 488 secondary antibody (2ug/ml).



EB08737 Flow cytometric analysis of paraformaldehyde fixed A431 cells (blue line), permeabilized with 0.5% Triton. Primary incubation 1hr (10ug/ml) followed by Alexa Fluor 488 secondary antibody (1ug/ml). IgG control: Unimmunized goat IgG (black line) followed by Alexa Fluor 488 secondary antibody.