



International Office

Everest Biotech Ltd

Vector Laboratories, Inc.
6737 Mowry Ave
Newark, CA 94560
United States

Customer Service:

customerservice@vectorlabs.com

Technical Service:

technical@vectorlabs.com

Tel: +1 (800) 227-6666

www.everestbiotech.com

**Research Use Only. Not for
diagnostic or therapeutic use.**

EB08740 - Goat Anti-ABCG1 Antibody

Size: 100µg specific antibody in 200µl



Target Protein

Principal Names: ABCG1, ATP-binding cassette, sub-family G (WHITE), member 1, ABC8, MGC34313, WHITE1, ABC transporter 8, ATP-binding cassette sub-family G member 1, ATP-binding cassette transporter 8, ATP-binding cassette transporter member 1 of subfamily G, homolog of Drosophila white, white protein homolog (ATP-binding cassette transporter 8)

Official Symbol: ABCG1

Accession Number(s): NP_058198.2; NP_997057.1; NP_004906.3; NP_997510.1; NP_997511.1; NP_997512.1

Human GeneID(s): [9619](#)

Important Comments: This antibody is expected to recognize all reported isoforms (NP_058198.2; NP_997057.1; NP_004906.3; NP_997510.1; NP_997511.1; NP_997512.1).

Immunogen

Peptide with sequence C-YFVRLRYKIRAER, from the C Terminus of the protein sequence according to NP_058198.2; NP_997057.1; NP_004906.3; NP_997510.1; NP_997511.1; NP_997512.1.

Please note the [peptide](#) is available for sale.

Purification and Storage

Purified from goat serum by ammonium sulphate precipitation followed by antigen affinity chromatography using the immunizing peptide.

Supplied at 0.5 mg/ml in Tris saline, 0.02% sodium azide, pH7.3 with 0.5% bovine serum albumin.

Aliquot and store at -20°C. Minimize freezing and thawing.

Applications Tested

Peptide ELISA: antibody detection limit dilution 1:4000.

Western blot: Approx. 75kDa band observed in lysates of cell lines HepG2, U937, THP-1, Jurkat and RAW264.7 (calculated MW of 74.2kDa according to Human NP_058198.2 and 74.1kDa according to Mouse NP_033723.1). Recommended concentration: 1-3µg/ml. Primary incubation 1 hour at room temperature.

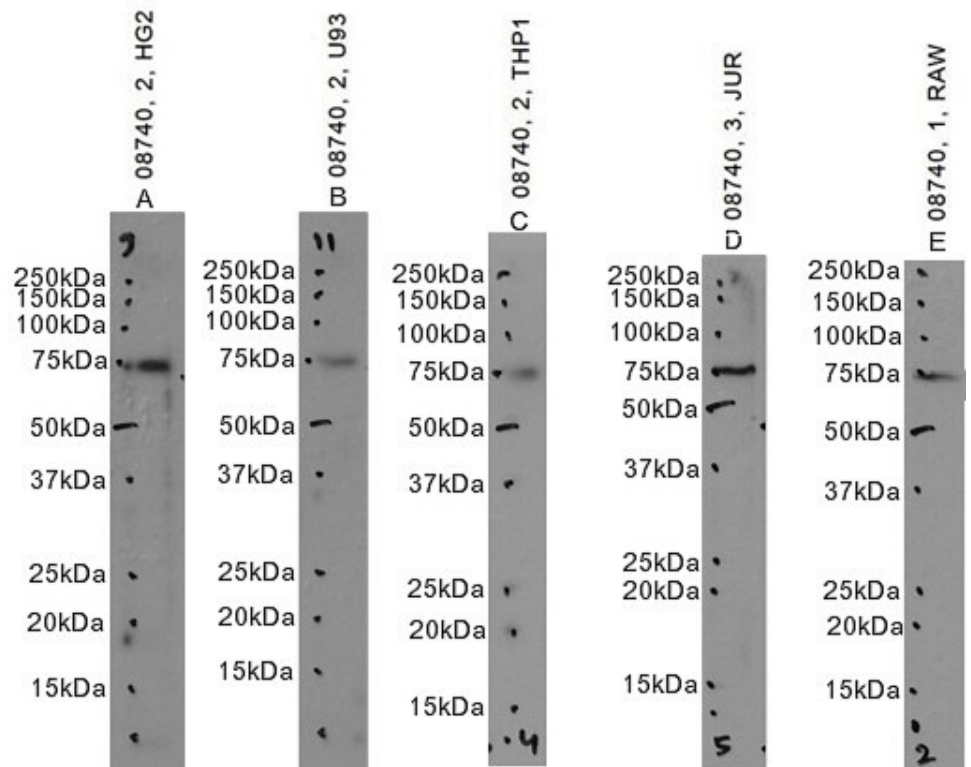
IHC: Paraffin embedded Human Testis. Recommended concentration: 5µg/ml.

Flow Cytometry: Flow cytometric analysis of THP-1 cells. Recommended concentration: 10ug/ml.

Species Reactivity

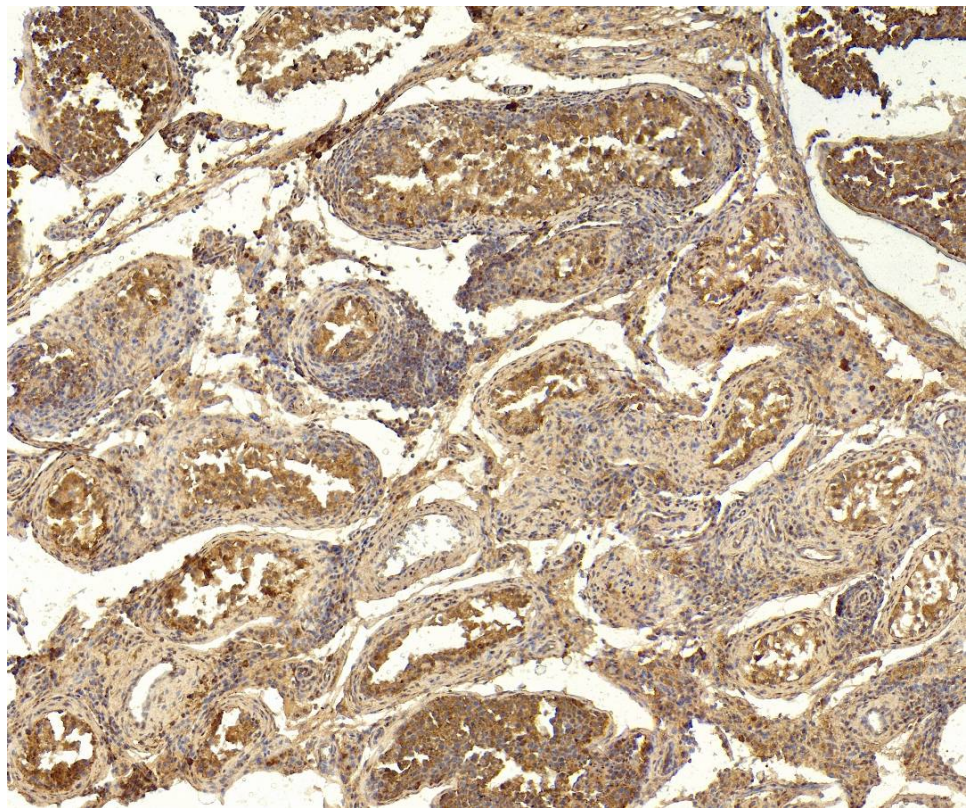
Tested: Human, Mouse

Expected from sequence similarity: Human, Mouse, Rat, Dog

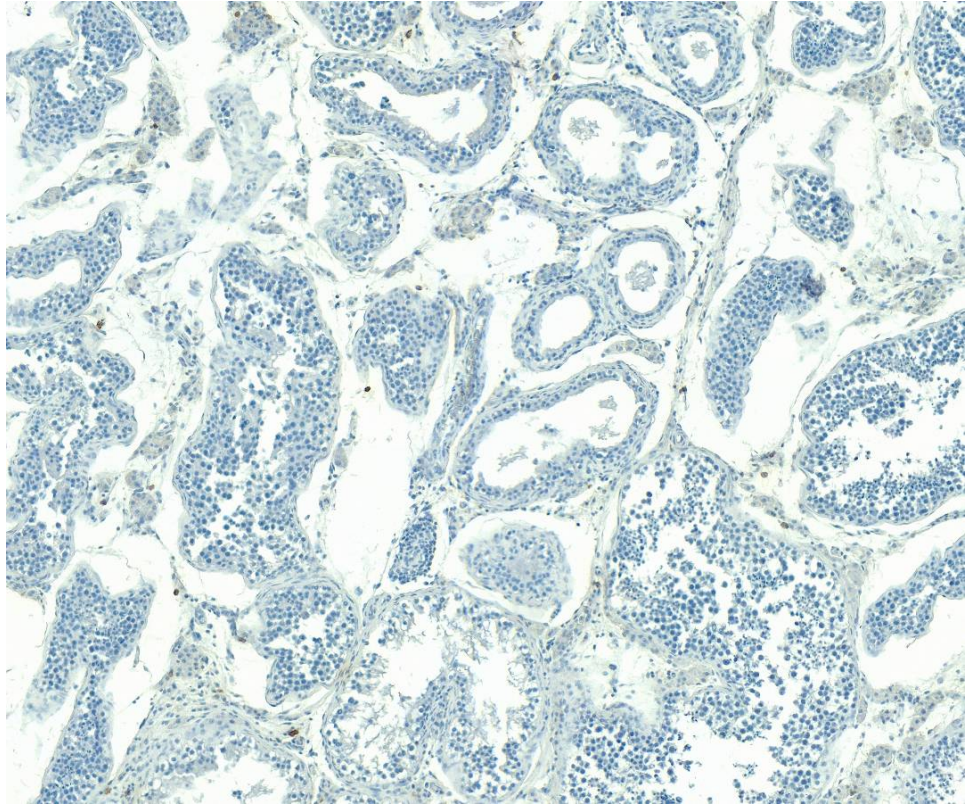


EB08740 optimised QC. Primary incubation 1 hour at room temperature.

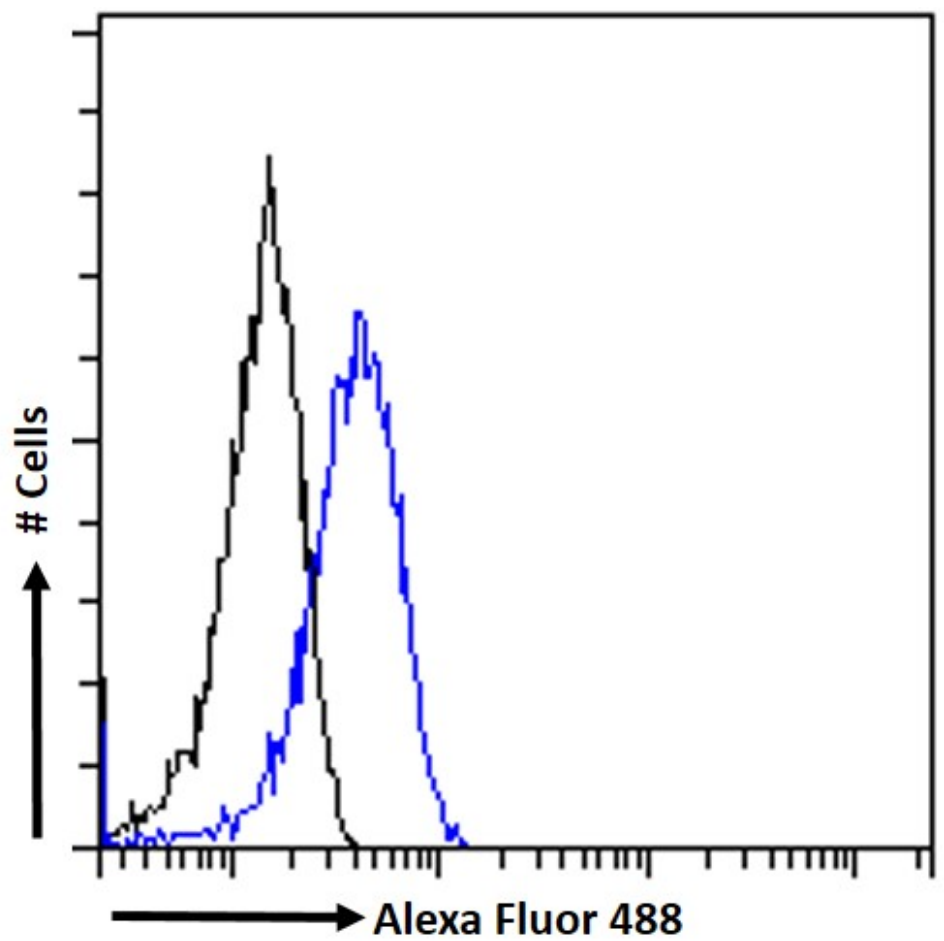
Images A, B, C: HepG2, U937, THP1 cell lysate at primary Ab concentration 2ug/ml.
 Images D, E: Jurkat, RAW264.7 cell lysate at primary Ab concentration 1ug/ml. (Loaded 35µg protein in RIPA buffer, per lane). Detected by chemiluminescence.



EB08740 (5µg/ml) staining of paraffin embedded Human Testis. Heat induced antigen retrieval with citrate buffer pH 6, HRP-staining.



EB08740 Negative Control showing staining of paraffin embedded Human Testis, with no primary antibody.



EB08740 Flow cytometric analysis of paraformaldehyde fixed THP1 cells (blue line) permeabilized with 0.5% Triton. Primary incubation 1hr (10ug/ml) followed by Alexa Fluor 488® conjugated secondary antibody (1ug/ml). IgG control: Unimmunized goat IgG (black line) followed by Alexa Fluor 488 secondary antibody.