



International Office

Everest Biotech Ltd

Vector Laboratories, Inc.
6737 Mowry Ave
Newark, CA 94560
United States

Customer Service:

customerservice@vectorlabs.com

Technical Service:

technical@vectorlabs.com

Tel: +1 (800) 227-6666

www.everestbiotech.com

**Research Use Only. Not for
diagnostic or therapeutic use.**

EB12498 - Goat Anti-ABCG2 / BCRP (Restricted sale due to demands of patent holder) Antibody

Size: 100µg specific antibody in 200µl



Target Protein

Principal Names: ABCG2, ATP-binding cassette, sub-family G (WHITE), member 2, ABC15, ABCP, BCRP, BCRP1, BMDP, CD338, CDw338, EST157481, GOUT1, MRX, MXR, MXR1, UAQTL1, ABC transporter, ATP-binding cassette sub-family G member 2, ATP-binding cassette transporter G2, breast

Official Symbol: ABCG2

Accession Number(s): NP_004818.2; NP_001244315.1

Human GeneID(s): [9429](#)

Important Comments: On restricted sale due to demands of patent holder. Not for sale in USA, if you are outside USA then please contact sales@everestbiotech.com to see if we can sell into your territory. This antibody is expected to recognize both reported isoforms (NP_004818.2; NP_001244315.1).

Immunogen

Peptide with sequence C-EPSKQDKPLIEK, from the internal region of the protein sequence according to NP_004818.2; NP_001244315.1.

Please note the [peptide](#) is available for sale.

Purification and Storage

Purified from goat serum by ammonium sulphate precipitation followed by antigen affinity chromatography using the immunizing peptide.

Supplied at 0.5 mg/ml in Tris saline, 0.02% sodium azide, pH7.3 with 0.5% bovine serum albumin.

Aliquot and store at -20°C. Minimize freezing and thawing.

Applications Tested

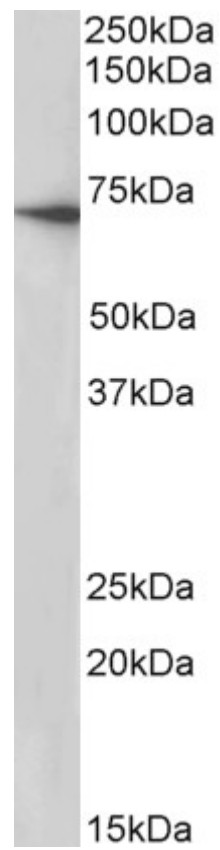
Peptide ELISA: antibody detection limit dilution 1:1000.

Western blot: Approx 70kDa band observed in lysates of cell line CACO-2 (calculated MW of 72.3kDa according to NP_004818.2). Recommended concentration: 0.1-0.3µg/ml.

Species Reactivity

Tested: Human

Expected from sequence similarity: Human



EB12498 (0.1µg/ml) staining of CACO-2 lysate (35µg protein in RIPA buffer). Primary incubation was 1 hour.
Detected by chemiluminescence.