



## UK Office

### Everest Biotech Ltd

Cherwell Innovation Centre  
77 Heyford Park  
Upper Heyford  
Oxfordshire  
OX25 5HD  
UK

Enquiries:

[info@everestbiotech.com](mailto:info@everestbiotech.com)

Sales:

[sales@everestbiotech.com](mailto:sales@everestbiotech.com)

Tech support:

[support@everestbiotech.com](mailto:support@everestbiotech.com)

Tel: +44 (0)1869 238326

Fax: +44 (0)1869 238327

## US Office

### Everest Biotech c/o Abcore

405 Maple Street, Suite A106  
Ramona,  
CA 92065  
USA

Inquiries:

[info@everestbiotech.com](mailto:info@everestbiotech.com)

Sales:

[usasales@everestbiotech.com](mailto:usasales@everestbiotech.com)

Tech support:

[support@everestbiotech.com](mailto:support@everestbiotech.com)

Tel: 888-320-4628 (toll-free)

Fax: 888-841-9041

[www.everestbiotech.com](http://www.everestbiotech.com)

**Research Use Only. Not for  
diagnostic or therapeutic use.**

## EB08783 - Goat Anti-ABHD12 Antibody

Size: 100µg specific antibody in 200µl



### Target Protein

**Principal Names:** ABHD12, abhydrolase domain containing 12, ABHD12A, BEM46L2, C20orf22, DKFZP434P106, dJ965G21.2

**Official Symbol:** ABHD12

**Accession Number(s):** NP\_001035937.1; NP\_056415.1

**Human GeneID(s):** [26090](#)

**Non-Human GeneID(s):** 76192 (mouse), 499913 (rat)

**Important Comments:** This antibody is expected to recognize isoform a (NP\_001035937.1) only.

### Immunogen

Peptide with sequence C-REFLGKSEPEHQH, from the C Terminus of the protein sequence according to NP\_001035937.1; NP\_056415.1.

Please note the [peptide](#) is available for sale.

### Purification and Storage

Purified from goat serum by ammonium sulphate precipitation followed by antigen affinity chromatography using the immunizing peptide.

Supplied at 0.5 mg/ml in Tris saline, 0.02% sodium azide, pH7.3 with 0.5% bovine serum albumin.

Aliquot and store at -20°C. Minimize freezing and thawing.

### Applications Tested

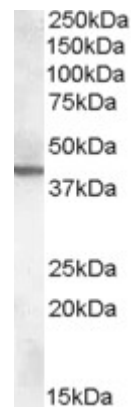
**Peptide ELISA:** antibody detection limit dilution 1:32000.

**Western blot:** Approx. 40kDa band observed in Mouse Brain and Rat Brain lysates (calculated MW of 45.1kDa according to Human NP\_001035937.1 and of 45.3kDa according to Mouse NP\_077785.2). Recommended concentration: 0.3-1µg/ml.

### Species Reactivity

**Tested:** Mouse, Rat

**Expected from sequence similarity:** Human, Mouse, Rat



EB08783 (0.3 $\mu$ g/ ml) staining of Mouse Brain lysate (35 $\mu$ g/ protein in RIPA buffer). Primary incubation was 1 hour. Detected by chemiluminescence.