

UK Office

Everest Biotech Ltd

Cherwell Innovation Centre
77 Heyford Park
Upper Heyford
Oxfordshire
OX25 5HD
UK

Enquiries:

info@everestbiotech.com

Sales:

sales@everestbiotech.com

Tech support:

support@everestbiotech.com

Tel: +44 (0)1869 238326

www.everestbiotech.com

**Research Use Only. Not for
diagnostic or therapeutic use.**

EB05674 - Goat Anti-ACADM Antibody

Size: 100µg specific antibody in 200µl



Target Protein

Principal Names: ACADM, acyl-Coenzyme A dehydrogenase, C-4 to C-12 straight chain, ACAD1, MCAD, MCADH, medium-chain acyl-CoA dehydrogenase, FLJ18227, FLJ93013, FLJ99884, medium-chain specific acyl-CoA dehydrogenase, acyl-Coenzyme A dehydrogenase, C-4 to C-12 straight chain

Official Symbol: ACADM

Accession Number(s): NP_000007.1; NP_001120800.1

Human GeneID(s): [34](#)

Important Comments: This antibody is expected to recognise both reported isoforms (NP_000007.1; NP_001120800.1).

Immunogen

Peptide with sequence C-RLIVAREHIDKYKN, from the C Terminus of the protein sequence according to NP_000007.1; NP_001120800.1.

Please note the [peptide](#) is available for sale.

Purification and Storage

Purified from goat serum by ammonium sulphate precipitation followed by antigen affinity chromatography using the immunizing peptide.

Supplied at 0.5 mg/ml in Tris saline, 0.02% sodium azide, pH7.3 with 0.5% bovine serum albumin.

Aliquot and store at -20°C. Minimize freezing and thawing.

Applications Tested

Peptide ELISA: antibody detection limit dilution 1:32000.

Western blot: Approx 45kDa band observed in Human Kidney and Heart lysates (calculated MW of 46.6kDa according to NP_000007.1). Recommended for use at 0.01-0.1µg/ml. Primary incubation was for 1 hour.

IHC: Paraffin embedded Human Liver and Adrenal Gland. Recommended concentration: 3.75µg/ml.

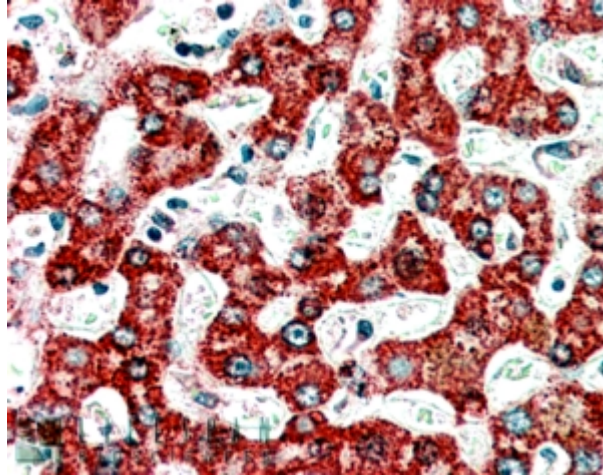
Species Reactivity

Tested: Human

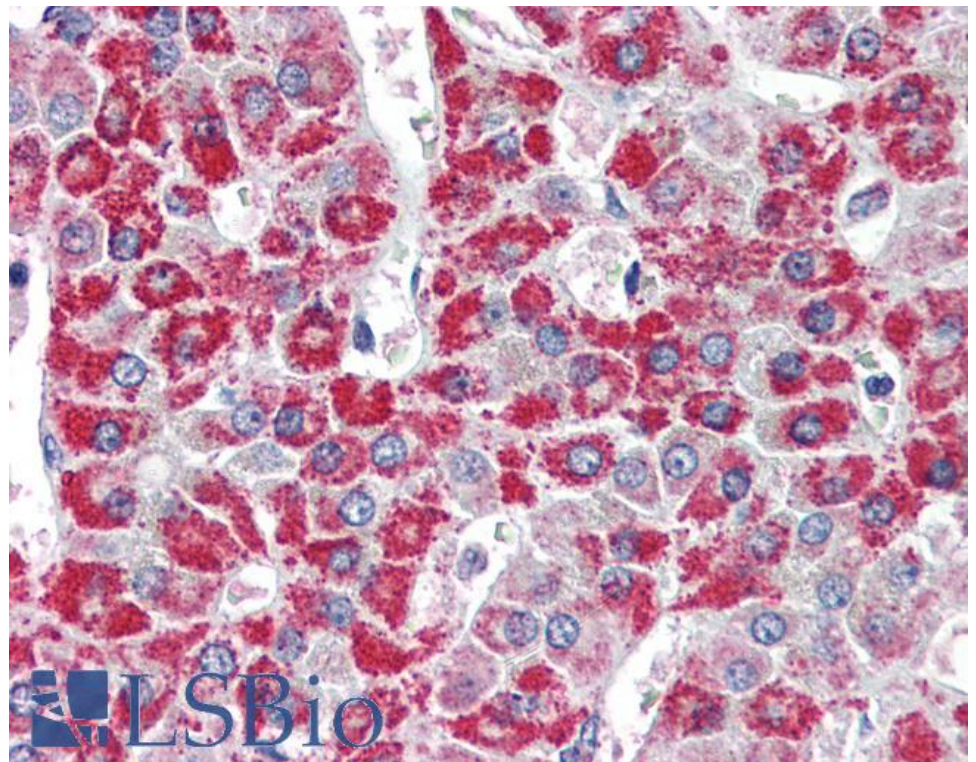
Expected from sequence similarity: Human

250kDa
150kDa
100kDa
75kDa
50kDa
37kDa
25kDa
20kDa

EB05674 staining (0.05 μ g/ml) of Human Heart lysate (RIPA buffer, 35 μ g total protein per lane). Detected by chemiluminescence.



EB05674 (3.75 μ g/ml) staining of paraffin embedded Human Liver. Steamed antigen retrieval with citrate buffer pH 6, AP-staining.



EB05674 (3.75 μ g/ml) staining of paraffin embedded Human Adrenal Gland. Steamed antigen retrieval with citrate buffer pH 6, AP-staining.