



## UK Office

### Everest Biotech Ltd

Cherwell Innovation Centre  
77 Heyford Park  
Upper Heyford  
Oxfordshire  
OX25 5HD  
UK

Enquiries:

[info@everestbiotech.com](mailto:info@everestbiotech.com)

Sales:

[sales@everestbiotech.com](mailto:sales@everestbiotech.com)

Tech support:

[support@everestbiotech.com](mailto:support@everestbiotech.com)

Tel: +44 (0)1869 238326

Fax: +44 (0)1869 238327

## US Office

### Everest Biotech c/o Abcore

405 Maple Street, Suite A106  
Ramona,  
CA 92065  
USA

Inquiries:

[info@everestbiotech.com](mailto:info@everestbiotech.com)

Sales:

[usasales@everestbiotech.com](mailto:usasales@everestbiotech.com)

Tech support:

[support@everestbiotech.com](mailto:support@everestbiotech.com)

Tel: 888-320-4628 (toll-free)

Fax: 888-841-9041

[www.everestbiotech.com](http://www.everestbiotech.com)

**Research Use Only. Not for  
diagnostic or therapeutic use.**

## EB05674 - Goat Anti-ACADM Antibody

Size: 100µg specific antibody in 200µl



### Target Protein

**Principal Names:** ACADM, acyl-Coenzyme A dehydrogenase, C-4 to C-12 straight chain, ACAD1, MCAD, MCADH, medium-chain acyl-CoA dehydrogenase, FLJ18227, FLJ93013, FLJ99884, medium-chain specific acyl-CoA dehydrogenase, acyl-Coenzyme A dehydrogenase, C-4 to C-12 straight chain

**Official Symbol:** ACADM

**Accession Number(s):** NP\_000007.1; NP\_001120800.1

**Human GeneID(s):** [34](#)

**Important Comments:** This antibody is expected to recognise both reported isoforms (NP\_000007.1; NP\_001120800.1).

### Immunogen

Peptide with sequence C-RLIVAREHIDKYKN, from the C Terminus of the protein sequence according to NP\_000007.1; NP\_001120800.1.

Please note the [peptide](#) is available for sale.

### Purification and Storage

Purified from goat serum by ammonium sulphate precipitation followed by antigen affinity chromatography using the immunizing peptide.

Supplied at 0.5 mg/ml in Tris saline, 0.02% sodium azide, pH7.3 with 0.5% bovine serum albumin.

Aliquot and store at -20°C. Minimize freezing and thawing.

### Applications Tested

**Peptide ELISA:** antibody detection limit dilution 1:32000.

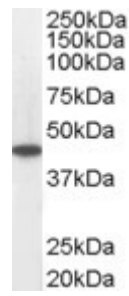
**Western blot:** Approx 45kDa band observed in Human Kidney and Heart lysates (calculated MW of 46.6kDa according to NP\_000007.1). Recommended for use at 0.01-0.1µg/ml. Primary incubation was for 1 hour.

**IHC:** Paraffin embedded Human Liver and Adrenal Gland. Recommended concentration: 3.75µg/ml.

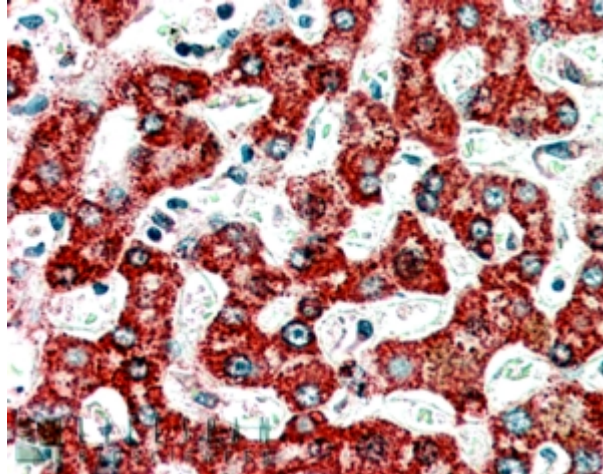
### Species Reactivity

**Tested:** Human

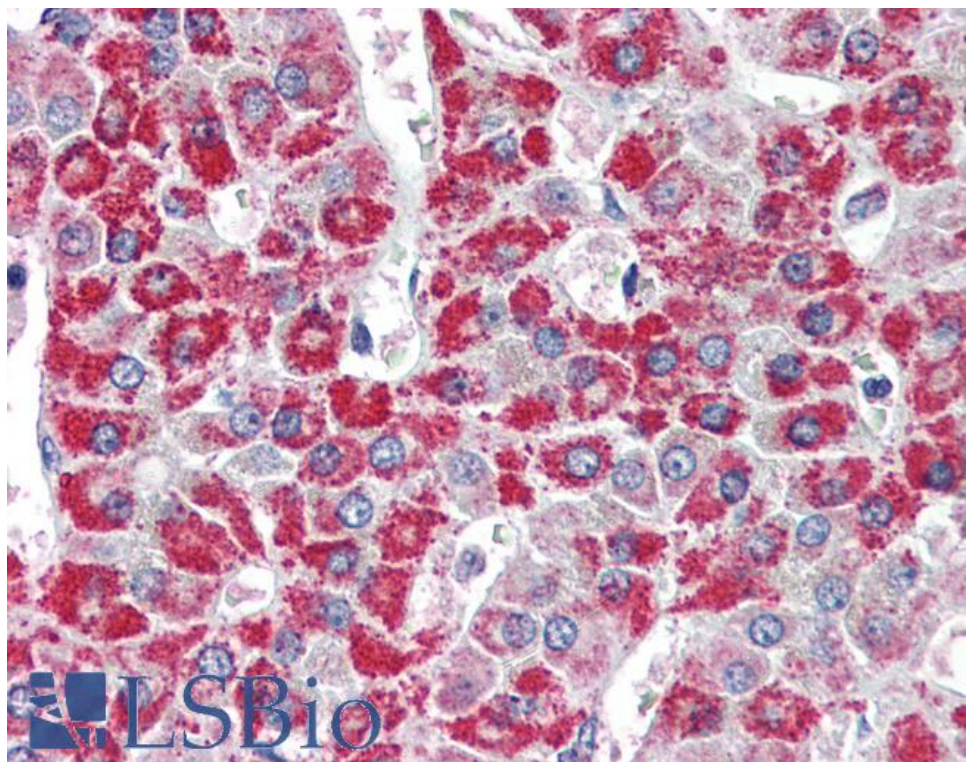
**Expected from sequence similarity:** Human



EB05674 staining (0.05 $\mu$ g/ml) of Human Heart lysate (RIPA buffer, 35 $\mu$ g total protein per lane). Detected by chemiluminescence.



EB05674 (3.75 $\mu$ g/ml) staining of paraffin embedded Human Liver. Steamed antigen retrieval with citrate buffer pH 6, AP-staining.



EB05674 (3.75 $\mu$ g/ml) staining of paraffin embedded Human Adrenal Gland. Steamed antigen retrieval with citrate buffer pH 6, AP-staining.