



UK Office

Everest Biotech Ltd

Cherwell Innovation Centre
77 Heyford Park
Upper Heyford
Oxfordshire
OX25 5HD
UK

Enquiries:

info@everestbiotech.com

Sales:

sales@everestbiotech.com

Tech support:

support@everestbiotech.com

Tel: +44 (0)1869 238326

www.everestbiotech.com

**Research Use Only. Not for
diagnostic or therapeutic use.**

EB09741-B - Goat Anti-ACAT1 (aa253-266), Biotinylated Antibody

Size: 100µg specific antibody in 200µl



Target Protein

Principal Names: ACAT1, acetyl-CoA acetyltransferase 1, ACAT, MAT, T2, THIL, acetoacetyl Coenzyme A thiolase, acetoacetyl-CoA thiolase, acetyl-Coenzyme A acetyltransferase 1, mitochondrial acetoacetyl-CoA thiolase

Official Symbol: ACAT1

Accession Number(s): NP_000010.1

Human GeneID(s): [38](#)

Non-Human GeneID(s): 110446 (mouse), 25014 (rat)

Immunogen

Peptide with sequence C-DEEYKRVDVFSKVPK., from the internal region of the protein sequence according to NP_000010.1.

Please note the [peptide](#) is available for sale.

Purification and Storage

Purified from goat serum by ammonium sulphate precipitation followed by antigen affinity chromatography using the immunizing peptide.

Supplied at 0.5 mg/ml in Tris saline, 0.02% sodium azide, pH7.3 with 0.5% bovine serum albumin.

Aliquot and store at -20°C. Minimize freezing and thawing.

Applications Tested

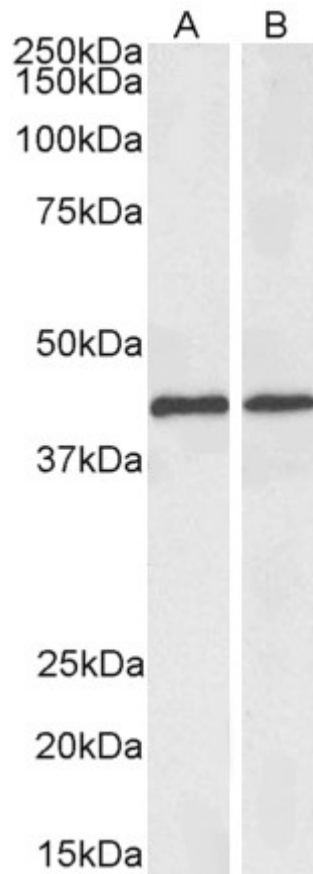
Peptide ELISA: antibody detection limit dilution 1:4000.

Western blot: Approx 45kDa band observed in Mouse and Rat Liver lysates (calculated MW of 44.8kDa according to Mouse NP_659033.1 and 44.7kDa according to Rat NP_058771.2). See non-biotinylated parental product's datasheet for further QC data.
Recommended concentration: 0.1-0.3µg/ml.

Species Reactivity

Tested: Human, Mouse, Rat

Expected from sequence similarity: Human, Mouse, Rat, Dog, Cow



Biotinylated EB09741 (0.1µg/ml) staining of Mouse (A) and Rat (B) Liver lysates (35µg protein in RIPA buffer), exactly mirroring its parental non-biotinylated product. Primary incubation was 1 hour. Detected by chemiluminescence, using streptavidin-HRP and using NAP blocker as a substitute for skimmed milk.