



UK Office

Everest Biotech Ltd

Cherwell Innovation Centre
77 Heyford Park
Upper Heyford
Oxfordshire
OX25 5HD
UK

Enquiries:

info@everestbiotech.com

Sales:

sales@everestbiotech.com

Tech support:

support@everestbiotech.com

Tel: +44 (0)1869 238326

www.everestbiotech.com

**Research Use Only. Not for
diagnostic or therapeutic use.**

EB13086 - Goat Anti-ACE2 (Internal) Antibody

Size: 100µg specific antibody in 200µl



Target Protein

Principal Names: ACE 2 antibody, ACE related carboxypeptidase antibody, ACE-related carboxypeptidase antibody, ACE2 antibody, ACE2_HUMAN antibody, ACEH antibody, Angiotensin converting enzyme 2 antibody, Angiotensin converting enzyme homolog antibody, Angiotensin converting enzyme like protein antibody, Angiotensin I Converting Enzyme (peptidyl dipeptidase A) 2 antibody, Angiotensin I converting enzyme 2 antibody, Angiotensin-converting enzyme homolog antibody

Official Symbol: ACE2

Accession Number(s): NP_001358344.1

Human GeneID(s): [59272](#)

Immunogen

Peptide with sequence PROPRIETARY-ACE2, from the internal region of the protein sequence according to NP_001358344.1.

Please note the [peptide](#) is available for sale.

Purification and Storage

Purified from goat serum by ammonium sulphate precipitation followed by antigen affinity chromatography using the immunizing peptide.

Supplied at 0.5 mg/ml in Tris saline, 0.02% sodium azide, pH7.3 with 0.5% bovine serum albumin.

Aliquot and store at -20°C. Minimize freezing and thawing.

Applications Tested

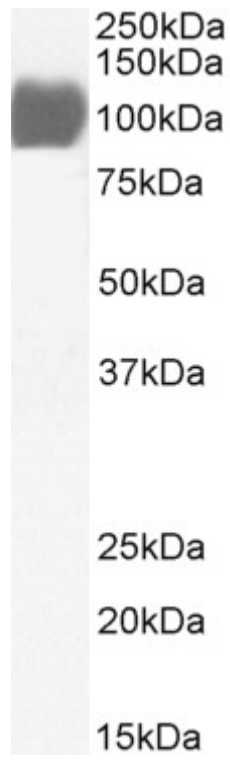
Peptide ELISA: antibody detection limit dilution 1:32000.

Western blot: Approx 100kDa band was also observed on full-length recombinant Human ACE2 protein (calculated MW of 92.4kDa according to NP_001358344.1). Recommended concentration 1ug/ml. Primary incubation 1 hour at room temperature.

Species Reactivity

Tested: Human

Expected from sequence similarity: Human



EB13086 (1 μ g/ml) staining of recombinant hACE2 (1 μ g protein in PBS, pH 7.4). Detected by chemiluminescence.