



## UK Office

### Everest Biotech Ltd

Cherwell Innovation Centre  
77 Heyford Park  
Upper Heyford  
Oxfordshire  
OX25 5HD  
UK

Enquiries:

[info@everestbiotech.com](mailto:info@everestbiotech.com)

Sales:

[sales@everestbiotech.com](mailto:sales@everestbiotech.com)

Tech support:

[support@everestbiotech.com](mailto:support@everestbiotech.com)

Tel: +44 (0)1869 238326

[www.everestbiotech.com](http://www.everestbiotech.com)

**Research Use Only. Not for  
diagnostic or therapeutic use.**

## EB13087 - Goat Anti-ACE2 (N Terminal) Antibody

Size: 100µg specific antibody in 200µl



### Target Protein

**Principal Names:** ACE 2 antibody, ACE related carboxypeptidase antibody, ACE-related carboxypeptidase antibody, ACE2 antibody, ACE2\_HUMAN antibody, ACEH antibody, Angiotensin converting enzyme 2 antibody, Angiotensin converting enzyme homolog antibody, Angiotensin converting enzyme like protein antibody, Angiotensin I Converting Enzyme (peptidyl dipeptidase A)

**Official Symbol:** ACE2

**Accession Number(s):** NP\_001358344.1

**Human GeneID(s):** [59272](#)

### Immunogen

Peptide with sequence PROPRIETARY-ACE2, from the N Terminus of the protein sequence according to NP\_001358344.1.

Please note the [peptide](#) is available for sale.

### Purification and Storage

Purified from goat serum by ammonium sulphate precipitation followed by antigen affinity chromatography using the immunizing peptide.

Supplied at 0.5 mg/ml in Tris saline, 0.02% sodium azide, pH7.3 with 0.5% bovine serum albumin.

Aliquot and store at -20°C. Minimize freezing and thawing.

### Applications Tested

**Peptide ELISA:** antibody detection limit dilution 1:128000.

**Western blot:** Approx 90-100kDa band observed in lysates of cell line HepG2 (calculated MW of 92.4kDa according to NP\_001358344.1). Recommended concentration 0.5-2ug/ml. Primary incubation 1 hour at room temperature.

Approx 100kDa band was also observed on full-length recombinant Human ACE2 protein. Recommended concentration 0.01-0.1ug/ml. Primary incubation 1 hour at room temperature.

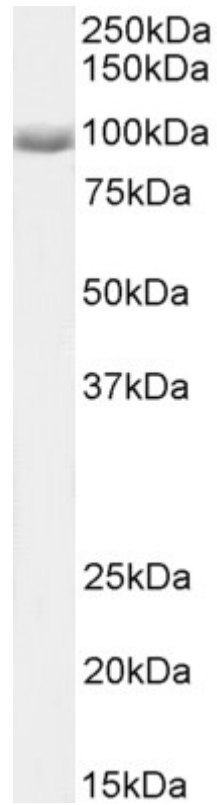
**IHC:** Paraffin embedded Human Testis. Recommended concentration: 8µg/ml.

**Flow Cytometry:** Flow cytometric analysis of HepG2 cells.. Recommended concentration: 10ug/ml.

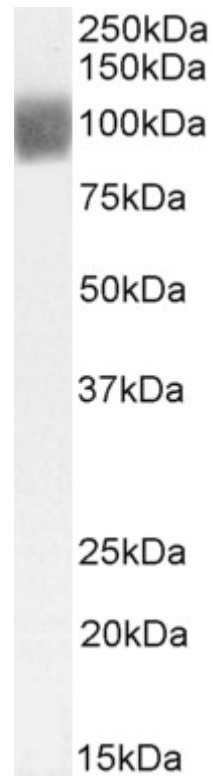
### Species Reactivity

**Tested:** Human

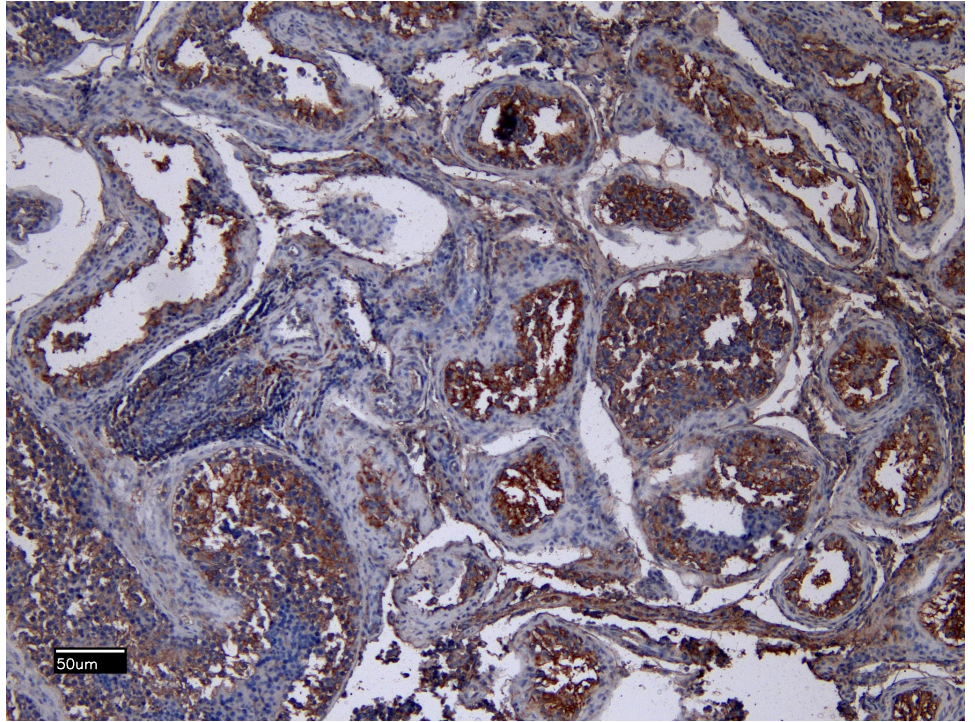
**Expected from sequence similarity:** Human



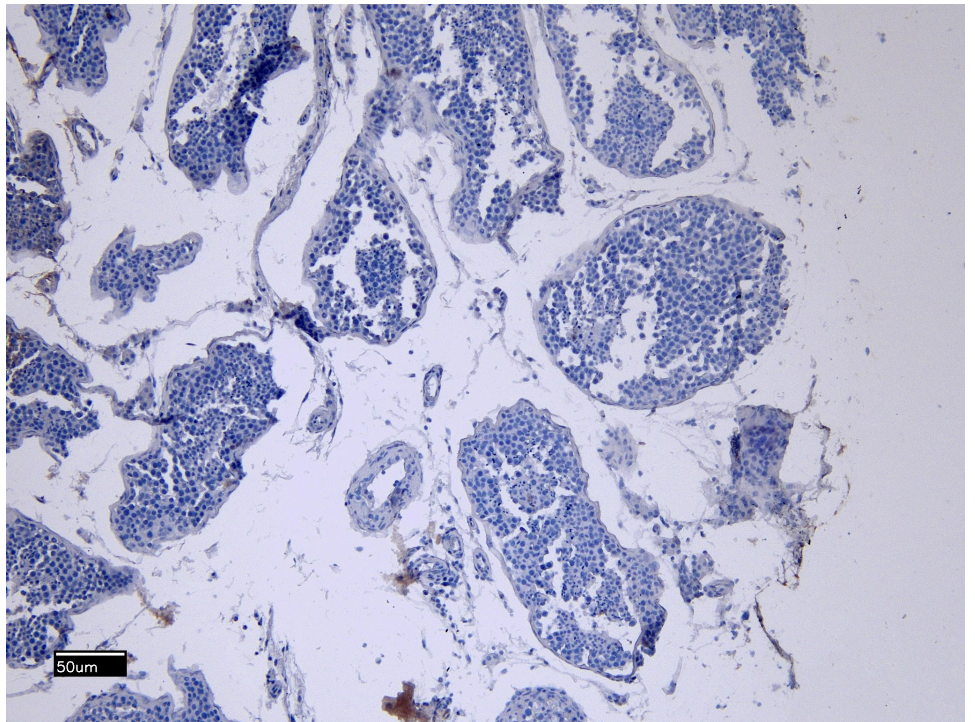
EB13087 (1.5 $\mu$ g/ml) staining of HepG2 cell lysate (35 $\mu$ g protein in RIPA buffer). Detected by chemiluminescence.



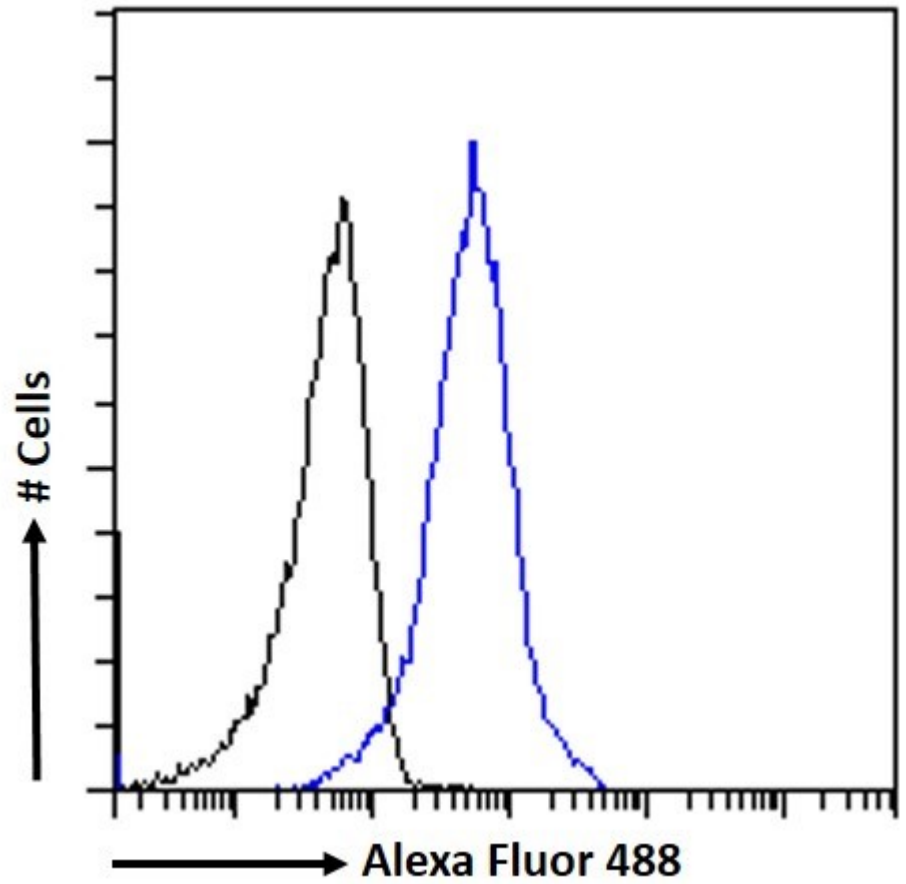
EB13087 (0.01 $\mu$ g/ml) staining of recombinant hACE2 (1  $\mu$ g protein in PBS, pH 7.4). Detected by chemiluminescence.



EB13087 (8 $\mu$ g/ml) staining of paraffin embedded Human Testis. Heat induced antigen retrieval with citrate buffer pH 6, HRP-staining.



EB13087 Negative Control showing staining of paraffin embedded Human Testis, with no primary antibody.



EB13087 Flow cytometric analysis of paraformaldehyde fixed HepG2 cells (blue line), permeabilized with 0.5% Triton. Primary incubation 1hr (10ug/ml) followed by Alexa Fluor 488 secondary antibody (1ug/ml). IgG control: Unimmunized goat IgG (black line) followed by Alexa Fluor 488 secondary antibody.