



UK Office

Everest Biotech Ltd

Cherwell Innovation Centre
77 Heyford Park
Upper Heyford
Oxfordshire
OX25 5HD
UK

Enquiries:

info@everestbiotech.com

Sales:

sales@everestbiotech.com

Tech support:

support@everestbiotech.com

Tel: +44 (0)1869 238326

www.everestbiotech.com

**Research Use Only. Not for
diagnostic or therapeutic use.**

EB10204 - Goat Anti-ACHRE / CHRNE Antibody

Size: 100µg specific antibody in 200µl



Target Protein

Principal Names: AchR epsilon subunit, ACHRE, cholinergic receptor, nicotinic, epsilon, cholinergic receptor, nicotinic, epsilon polypeptide, CMS1D, CMS1E, CMS2A, FCCMS, nicotinic acetylcholine receptor epsilon polypeptide, SCCMS, CHRNE

Official Symbol: CHRNE

Accession Number(s): NP_000071.1

Human GeneID(s): [1145](#)

Non-Human GeneID(s): 11448 (mouse), 29422 (rat)

Immunogen

Peptide with sequence C-DQEATGEEVSD, from the Internal region of the protein sequence according to NP_000071.1.

Please note the [peptide](#) is available for sale.

Purification and Storage

Purified from goat serum by ammonium sulphate precipitation followed by antigen affinity chromatography using the immunizing peptide.

Supplied at 0.5 mg/ml in Tris saline, 0.02% sodium azide, pH7.3 with 0.5% bovine serum albumin.

Aliquot and store at -20°C. Minimize freezing and thawing.

Applications Tested

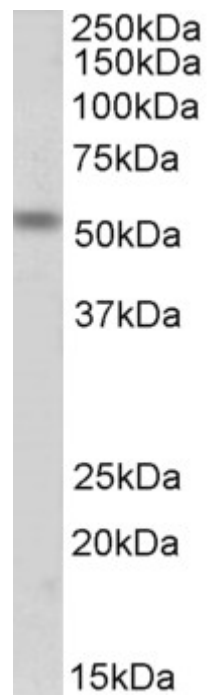
Peptide ELISA: antibody detection limit dilution 1:1000.

Western blot: Approx 55kDa band observed in Mouse Fetal Skeletal Muscle lysates (calculated MW of 54.9kDa according to NP_033733.1). Recommended concentration: 1-3µg/ml.

Species Reactivity

Tested: Mouse

Expected from sequence similarity: Human, Mouse, Rat, Cow



EB10204 (1 μ g/ml) staining of Mouse Fetal Skeletal Muscle lysate (35 μ g protein in RIPA buffer). Primary incubation was 1 hour. Detected by chemiluminescence.