



## UK Office

### Everest Biotech Ltd

Cherwell Innovation Centre  
77 Heyford Park  
Upper Heyford  
Oxfordshire  
OX25 5HD  
UK

Enquiries:

[info@everestbiotech.com](mailto:info@everestbiotech.com)

Sales:

[sales@everestbiotech.com](mailto:sales@everestbiotech.com)

Tech support:

[support@everestbiotech.com](mailto:support@everestbiotech.com)

Tel: +44 (0)1869 238326

[www.everestbiotech.com](http://www.everestbiotech.com)

**Research Use Only. Not for  
diagnostic or therapeutic use.**

## EB09858-B - Goat Anti-Aconitase 2 (aa541-555), Biotinylated Antibody

Size: 100µg specific antibody in 200µl



### Target Protein

**Principal Names:** ACO2, aconitase 2, ACONM, HEL-S-284, ICRD, OCA8, OPA9, aconitase 2, mitochondrial, citrate hydro-lyase, epididymis secretory sperm binding protein Li 284, mitochondrial aconitase

**Official Symbol:** ACO2

**Accession Number(s):** NP\_001089.1

**Human GeneID(s):** [50](#)

### Immunogen

Peptide with sequence CQDTYQHPPKDSSGQH., from the internal region of the protein sequence according to NP\_001089.1.

Please note the [peptide](#) is available for sale.

### Purification and Storage

Purified from goat serum by ammonium sulphate precipitation followed by antigen affinity chromatography using the immunizing peptide.

Supplied at 0.5 mg/ml in Tris saline, 0.02% sodium azide, pH7.3 with 0.5% bovine serum albumin.

Aliquot and store at -20°C. Minimize freezing and thawing.

### Applications Tested

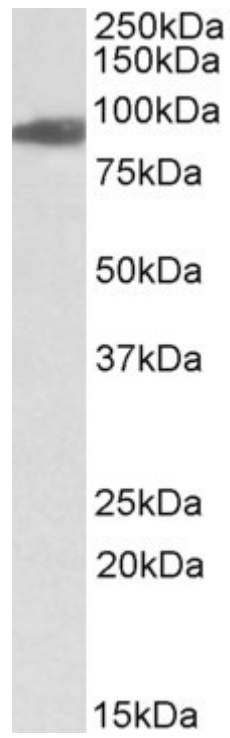
**Peptide ELISA:** antibody detection limit dilution 1:16000.

**Western blot:** Approx 90kDa band observed in Human Heart lysates, in Human, Mouse and Rat Adipose lysates and in Mouse, Rat and Pig Skeletal Muscle lysates (calculated MW of 85.4kDa according to NP\_001089.1). Recommended concentration: 0.01-0.03µg/ml. See non-biotinylated parental product's datasheet for further QC data

### Species Reactivity

**Tested:** Human, Mouse, Rat, Pig

**Expected from sequence similarity:** Human, Mouse, Rat, Dog, Cow, Pig



Biotinylated EB09858 (0.01 $\mu$ g/ml) staining of Human Heart lysate (35 $\mu$ g protein in RIPA buffer). Primary incubation was 1 hour. Detected by chemiluminescence.