



## International Office

### Everest Biotech Ltd

Vector Laboratories, Inc.  
6737 Mowry Ave  
Newark, CA 94560  
United States

Customer Service:

[customerservice@vectorlabs.com](mailto:customerservice@vectorlabs.com)

Technical Service:

[technical@vectorlabs.com](mailto:technical@vectorlabs.com)

Tel: +1 (800) 227-6666

[www.everestbiotech.com](http://www.everestbiotech.com)

**Research Use Only. Not for  
diagnostic or therapeutic use.**

## EB09390 - Goat Anti-ACPP / PAP Antibody

Size: 100µg specific antibody in 200µl



### Target Protein

**Principal Names:** ACPP, acid phosphatase, prostate, ACP-3, ACP3, PAP, prostatic acid phosphatase

**Official Symbol:** ACP3

**Accession Number(s):** NP\_001090.2

**Human GeneID(s):** [55](#)

**Non-Human GeneID(s):** 56318 (mouse), 56780 (rat)

**Important Comments:** This antibody is expected to recognize both isoforms (NP\_001090.2; NP\_001127666.1).

### Immunogen

Peptide with sequence C-YGIHKQKEKSRLQ, from the internal region of the protein sequence according to NP\_001090.2.

Please note the [peptide](#) is available for sale.

### Purification and Storage

Purified from goat serum by ammonium sulphate precipitation followed by antigen affinity chromatography using the immunizing peptide.

Supplied at 0.5 mg/ml in Tris saline, 0.02% sodium azide, pH7.3 with 0.5% bovine serum albumin.

Aliquot and store at -20°C. Minimize freezing and thawing.

### Applications Tested

**Peptide ELISA:** antibody detection limit dilution 1:64000.

**Western blot:** Approx 50kDa band observed in Human Prostate lysates (calculated MW of 44.6kDa according to NP\_001090.2). The observed molecular weight corresponds to earlier findings in literature with different antibodies (Patel et al, Clin Chem. 1986 Oct;32(10):1832-5. PMID: 3530530). Recommended concentration: 0.3-1µg/ml.

**IHC:** In paraffin embedded Human Prostate shows cytoplasm staining in some secretory cells of the gland. Recommended concentration, 3-5µg/ml. This antibody has been successfully used in IHC on Mouse: Nousiainen HO et al. (2014) PMID: 24846136.

**Immunofluorescence:** This antibody has been successfully used in IF on Mouse: Nousiainen HO et al. (2014) PMID: 24846136.

### Species Reactivity

**Tested:** Human, Mouse

**Expected from sequence similarity:** Human, Mouse, Rat, Dog, Cow

### Specific Reference

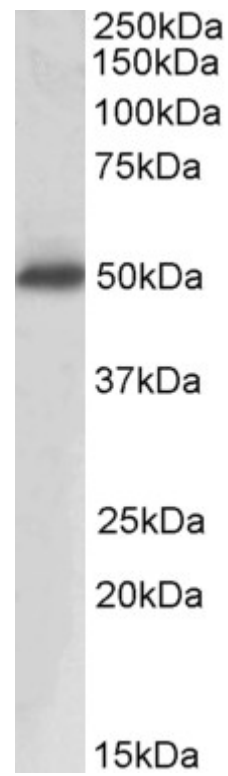
**This antibody has been successfully used in IHC and IF on Mouse:**

Nousiainen HO, Quintero IB, Myöhänen TT, Voikar V, Mijatovic J, Segerstråle M, Herrala AM, Kuleshkaya N, Pulkka AE, Kivinummi T, Abo Ramadan U, Taira T, Piepponen TP, Rauvala H, Vihko P.

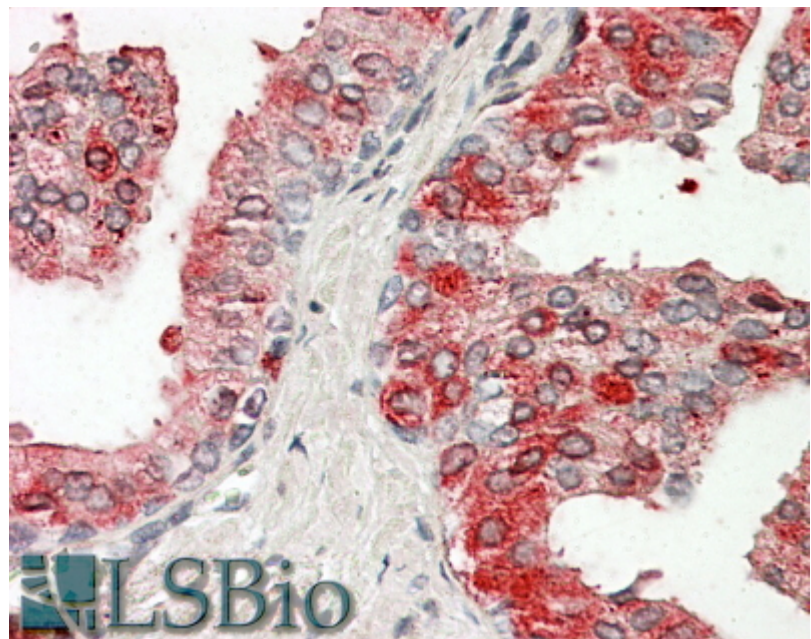
Mice deficient in transmembrane prostatic Acid phosphatase display increased GABAergic transmission and neurological alterations.

PLoS One. 2014 May 20;9(5):e97851.

PMID: 24846136



EB09390 (0.3 $\mu$ g/ml) staining of Human Prostate lysate (35 $\mu$ g protein in RIPA buffer). Primary incubation was 1 hour. Detected by chemiluminescence.



EB09390 (3.8 $\mu$ g/ml) staining of paraffin embedded Human Prostate. Steamed antigen retrieval with citrate buffer pH 6, AP-staining.