



## International Office

### Everest Biotech Ltd

Vector Laboratories, Inc.  
6737 Mowry Ave  
Newark, CA 94560  
United States

Customer Service:

[customerservice@vectorlabs.com](mailto:customerservice@vectorlabs.com)

Technical Service:

[technical@vectorlabs.com](mailto:technical@vectorlabs.com)

Tel: +1 (800) 227-6666

[www.everestbiotech.com](http://www.everestbiotech.com)

**Research Use Only. Not for  
diagnostic or therapeutic use.**

## EB10915 - Goat Anti-ACPP / PAP (aa269-282) Antibody

Size: 100µg specific antibody in 200µl



### Target Protein

**Principal Names:** ACPP, acid phosphatase, prostate, ACP-3, ACP3, PAP, OTTHUMP00000216107, prostatic acid phosphatase, prostatic acid phosphatase

**Official Symbol:** ACP3

**Accession Number(s):** NP\_001127666.1; NP\_001090.2

**Human GeneID(s):** [55](#)

**Important Comments:** This antibody is expected to recognize both reported isoforms (NP\_001127666.1; NP\_001090.2).

### Immunogen

Peptide with sequence C-NHMKRATQIPSYKK, from the internal region of the protein sequence according to NP\_001127666.1; NP\_001090.2.

Please note the [peptide](#) is available for sale.

### Purification and Storage

Purified from goat serum by ammonium sulphate precipitation followed by antigen affinity chromatography using the immunizing peptide.

Supplied at 0.5 mg/ml in Tris saline, 0.02% sodium azide, pH7.3 with 0.5% bovine serum albumin.

Aliquot and store at -20°C. Minimize freezing and thawing.

### Applications Tested

**Peptide ELISA:** antibody detection limit dilution 1:32000.

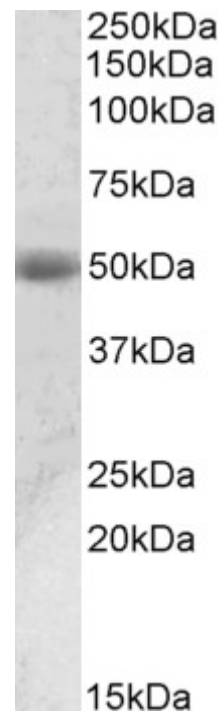
**Western blot:** Approx 50kDa band observed in Human Prostate lysates (calculated MW of 48.3kDa according to NP\_001127666.1). Recommended concentration: 0.01-0.03µg/ml.

**IHC:** In paraffin embedded Human Prostate shows reticulate cytoplasm staining, more intense towards the lumen of the gland. Recommended concentration, 3-5µg/ml.

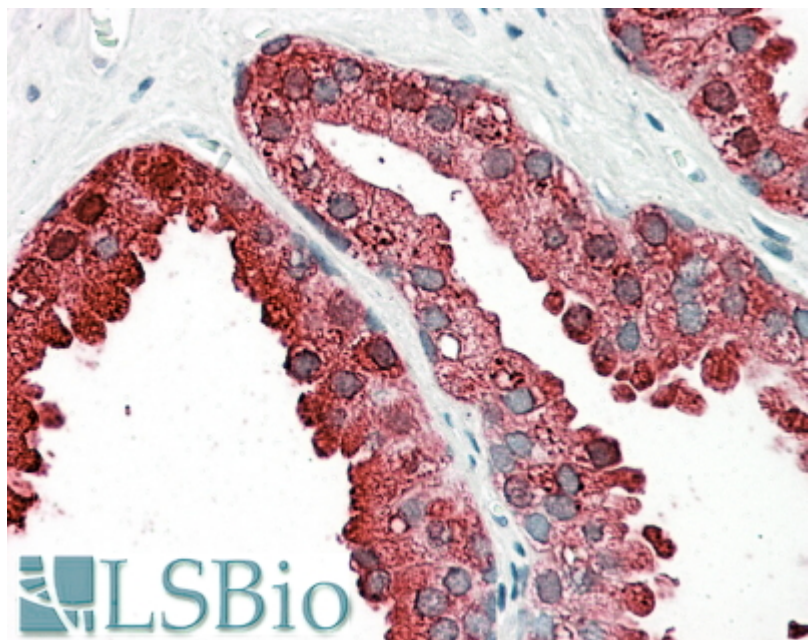
### Species Reactivity

**Tested:** Human

**Expected from sequence similarity:** Human



EB10915 (0.01 $\mu$ g/ml) staining of Human Prostate lysate (35 $\mu$ g protein in RIPA buffer). Primary incubation was 1 hour. Detected by chemiluminescence.



EB10915 (3.8 $\mu$ g/ml) staining of paraffin embedded Human Prostate. Steamed antigen retrieval with citrate buffer pH 6, AP-staining.