



International Office

Everest Biotech Ltd

Vector Laboratories, Inc.
6737 Mowry Ave
Newark, CA 94560
United States

Customer Service:

customerservice@vectorlabs.com

Technical Service:

technical@vectorlabs.com

Tel: +1 (800) 227-6666

www.everestbiotech.com

**Research Use Only. Not for
diagnostic or therapeutic use.**

EB10915-B - Goat Anti-ACPP / PAP (aa269-282), Biotinylated Antibody

Size: 100µg specific antibody in 200µl



Target Protein

Principal Names: ACPP, acid phosphatase, prostate, ACP-3, ACP3, PAP, OTTHUMP00000216107, prostatic acid phosphatase, prostatic acid phosphatase

Official Symbol: ACP3

Accession Number(s): NP_001127666.1; NP_001090.2

Human GeneID(s): [55](#)

Important Comments: This antibody is expected to recognize both reported isoforms (NP_001127666.1; NP_001090.2).

Immunogen

Peptide with sequence C-NHMKRATQIPSYKK., from the internal region of the protein sequence according to NP_001127666.1; NP_001090.2.

Please note the [peptide](#) is available for sale.

Purification and Storage

Purified from goat serum by ammonium sulphate precipitation followed by antigen affinity chromatography using the immunizing peptide.

Supplied at 0.5 mg/ml in Tris saline, 0.02% sodium azide, pH7.3 with 0.5% bovine serum albumin.

Aliquot and store at -20°C. Minimize freezing and thawing.

Applications Tested

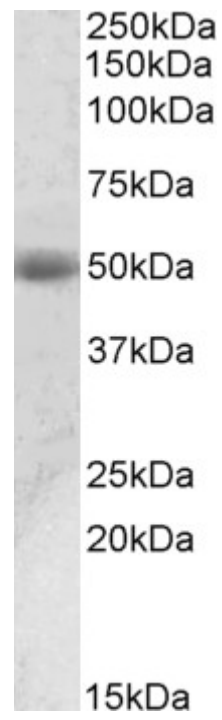
Peptide ELISA: antibody detection limit dilution 1:32000.

Western blot: Approx 50kDa band observed in Human Prostate lysates (calculated MW of 48.3kDa according to NP_001127666.1). Recommended concentration: 0.01-0.03µg/ml.

Species Reactivity

Tested: Human

Expected from sequence similarity: Human



Biotinylated EB10915 (0.01 μ g/ml) staining of Human Prostate lysate (35 μ g protein in RIPA buffer). Primary incubation was 1 hour. Detected by chemiluminescence.