



UK Office

Everest Biotech Ltd

Cherwell Innovation Centre
77 Heyford Park
Upper Heyford
Oxfordshire
OX25 5HD
UK

Enquiries:

info@everestbiotech.com

Sales:

sales@everestbiotech.com

Tech support:

support@everestbiotech.com

Tel: +44 (0)1869 238326

Fax: +44 (0)1869 238327

US Office

Everest Biotech c/o Abcore

405 Maple Street, Suite A106
Ramona,
CA 92065
USA

Inquiries:

info@everestbiotech.com

Sales:

usasales@everestbiotech.com

Tech support:

support@everestbiotech.com

Tel: 888-320-4628 (toll-free)

Fax: 888-841-9041

www.everestbiotech.com

**Research Use Only. Not for
diagnostic or therapeutic use.**

EB07250 - Goat Anti-ACSL5 Antibody

Size: 100µg specific antibody in 200µl



Target Protein

Principal Names: ACSL5, acyl-CoA synthetase long-chain family member 5, HGNC:16526, ACS2, ACS5, FACL5, fatty-acid-Coenzyme A ligase, long-chain 5, long-chain acyl-CoA synthetase 5, long-chain fatty acid coenzyme A ligase 5

Official Symbol: ACSL5

Accession Number(s): NP_057318.2; NP_976313.1; NP_976314.1

Human GeneID(s): [51703](#)

Important Comments: This antibody is expected to recognise isoform a (NP_057318.2) and isoform b (NP_976313.1 and NP_976314.1).

Immunogen

Peptide with sequence C-RTQIDSLYEHIQD, from the C Terminus of the protein sequence according to NP_057318.2; NP_976313.1; NP_976314.1.

Please note the [peptide](#) is available for sale.

Purification and Storage

Purified from goat serum by ammonium sulphate precipitation followed by antigen affinity chromatography using the immunizing peptide.

Supplied at 0.5 mg/ml in Tris saline, 0.02% sodium azide, pH7.3 with 0.5% bovine serum albumin.

Aliquot and store at -20°C. Minimize freezing and thawing.

Applications Tested

Peptide ELISA: antibody detection limit dilution 1:16000.

Western blot: Approx 75kDa band observed in Human Spleen lysates (calculated MW of 76.0kDa according to NP_976313.1 and NP_976314.1). Recommended concentration: 1-3µg/ml.

IHC: Paraffin embedded Human Small Intestine. Recommended concentration: 5µg/ml.

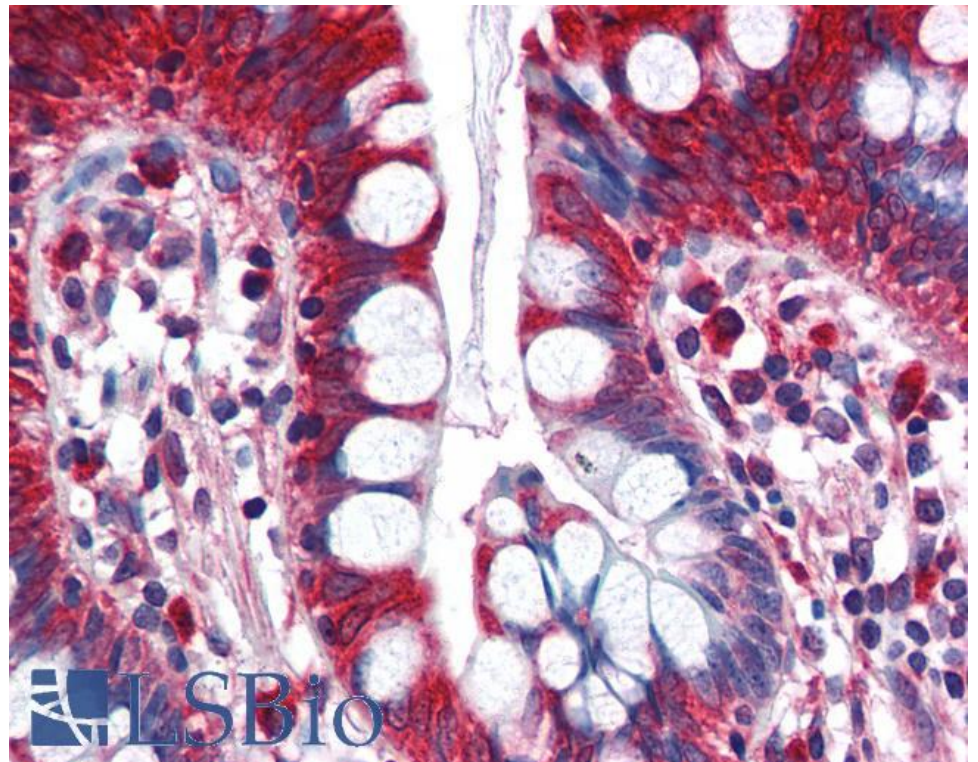
Species Reactivity

Tested: Human

Expected from sequence similarity: Human



EB07250 (1 μ g/ml) staining of Human Spleen lysate (35 μ g protein in RIPA buffer). Primary incubation was 1 hour. Detected by chemiluminescence.



EB07250 (5 μ g/ml) staining of paraffin embedded Human Small Intestine. Steamed antigen retrieval with citrate buffer pH 6, AP-staining.