



## UK Office

### Everest Biotech Ltd

Cherwell Innovation Centre  
77 Heyford Park  
Upper Heyford  
Oxfordshire  
OX25 5HD  
UK

Enquiries:

[info@everestbiotech.com](mailto:info@everestbiotech.com)

Sales:

[sales@everestbiotech.com](mailto:sales@everestbiotech.com)

Tech support:

[support@everestbiotech.com](mailto:support@everestbiotech.com)

Tel: +44 (0)1869 238326

Fax: +44 (0)1869 238327

## US Office

### Everest Biotech c/o Abcore

405 Maple Street, Suite A106  
Ramona,  
CA 92065  
USA

Inquiries:

[info@everestbiotech.com](mailto:info@everestbiotech.com)

Sales:

[usasales@everestbiotech.com](mailto:usasales@everestbiotech.com)

Tech support:

[support@everestbiotech.com](mailto:support@everestbiotech.com)

Tel: 888-320-4628 (toll-free)

Fax: 888-841-9041

[www.everestbiotech.com](http://www.everestbiotech.com)

**Research Use Only. Not for  
diagnostic or therapeutic use.**

## EB07651 - Goat Anti-Actin-like 7B (mouse) Antibody

Size: 100µg specific antibody in 200µl



### Target Protein

**Principal Names:** actin-like 7B, ACTL7B, MGC151192, MGC151194, Tact1, actin-like 7-beta, t-actin 1

**Official Symbol:** Actl7b

**Accession Number(s):** NP\_079547.1

**Non-Human GeneID(s):** 11471 (mouse), 313183 (rat)

**Important Comments:** This antibody is not expected to cross-react with Actin-like 7A.

### Immunogen

Peptide with sequence C-DELHVDYELPDGK, from the internal region of the protein sequence according to NP\_079547.1.

Please note the [peptide](#) is available for sale.

### Purification and Storage

Purified from goat serum by ammonium sulphate precipitation followed by antigen affinity chromatography using the immunizing peptide.

Supplied at 0.5 mg/ml in Tris saline, 0.02% sodium azide, pH7.3 with 0.5% bovine serum albumin.

Aliquot and store at -20°C. Minimize freezing and thawing.

### Applications Tested

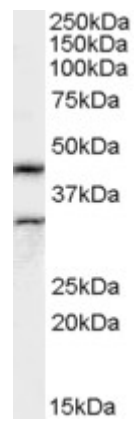
**Peptide ELISA:** antibody detection limit dilution 1:32000.

**Western blot:** Approx 45kDa band observed in Rat Testis lysates (calculated MW of 45.5kDa according to Rat NP\_001020588.1 and 45.6kDa according to Mouse NP\_079547.1). Recommended concentration: 0.5-1.5µg/ml. An additional band of unknown identity was also consistently observed at 30kDa. This band was successfully blocked by incubation with the immunising peptide. We would appreciate any feedback from people in the field - have any such results been reported with other antibodies/lysates? Have any further splice variants/modified forms been reported?

### Species Reactivity

**Tested:** Rat

**Expected from sequence similarity:** Mouse, Rat



EB07651 (0.5 $\mu$ g/ml) staining of Rat Testes lysate (35 $\mu$ g protein in RIPA buffer). Primary incubation was 1 hour.  
Detected by chemiluminescence.