



## International Office

### Everest Biotech Ltd

Vector Laboratories, Inc.  
6737 Mowry Ave  
Newark, CA 94560  
United States

Customer Service:

[customerservice@vectorlabs.com](mailto:customerservice@vectorlabs.com)

Technical Service:

[technical@vectorlabs.com](mailto:technical@vectorlabs.com)

Tel: +1 (800) 227-6666

[www.everestbiotech.com](http://www.everestbiotech.com)

**Research Use Only. Not for  
diagnostic or therapeutic use.**

## EB06267 - Goat Anti-Activin receptor-like kinase 1 Antibody

Size: 100µg specific antibody in 200µl



### Target Protein

**Principal Names:** ACVRL1, HHT, ALK1, HHT2, ORW2, SKR3, ALK-1, ACVRLK1, activin A receptor type II-like 1, Activin A receptor, type II-like kinase 1, ALK1, TSR-I, TGF-B superfamily receptor type I, activin A receptor, type II-like kinase 1, serine/threonine-protein kinase receptor R3

**Official Symbol:** ACVRL1

**Accession Number(s):** NP\_000011.2; NP\_001070869.1

**Human GeneID(s):** [94](#)

**Important Comments:** Please note that this product is not to be confused with the similarly named ALK (anaplastic lymphoma kinase, GeneID 238). Reported variant represent identical protein: NP\_000011.2; NP\_001070869.1

### Immunogen

Peptide with sequence C-KISNSPEKPKVIQ, from the C Terminus of the protein sequence according to NP\_000011.2; NP\_001070869.1.

Please note the [peptide](#) is available for sale.

### Purification and Storage

Purified from goat serum by ammonium sulphate precipitation followed by antigen affinity chromatography using the immunizing peptide.

Supplied at 0.5 mg/ml in Tris saline, 0.02% sodium azide, pH7.3 with 0.5% bovine serum albumin.

Aliquot and store at -20°C. Minimize freezing and thawing.

### Applications Tested

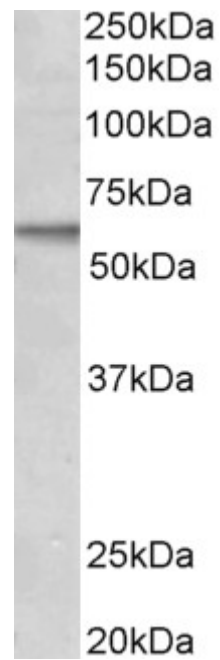
**Peptide ELISA:** antibody detection limit dilution 1:32000.

**Western blot:** Approx 60kDa band observed in lysates of cell line MCF7 (calculated MW of 56.1kDa according to NP\_000011.2). Recommended concentration: 1-3µg/ml.

### Species Reactivity

**Tested:** Human

**Expected from sequence similarity:** Human



EB06267 (2 $\mu$ g/ml) staining of MCF7 lysate (35 $\mu$ g protein in RIPA buffer). Primary incubation was 1 hour.  
Detected by chemiluminescence.