



UK Office

Everest Biotech Ltd

Cherwell Innovation Centre
77 Heyford Park
Upper Heyford
Oxfordshire
OX25 5HD
UK

Enquiries:

info@everestbiotech.com

Sales:

sales@everestbiotech.com

Tech support:

support@everestbiotech.com

Tel: +44 (0)1869 238326

Fax: +44 (0)1869 238327

US Office

Everest Biotech c/o Abcore

405 Maple Street, Suite A106
Ramona,
CA 92065
USA

Inquiries:

info@everestbiotech.com

Sales:

usasales@everestbiotech.com

Tech support:

support@everestbiotech.com

Tel: 888-320-4628 (toll-free)

Fax: 888-841-9041

www.everestbiotech.com

**Research Use Only. Not for
diagnostic or therapeutic use.**

EB06267 - Goat Anti-Activin receptor-like kinase 1 Antibody

Size: 100µg specific antibody in 200µl



Target Protein

Principal Names: ACVRL1, HHT, ALK1, HHT2, ORW2, SKR3, ALK-1, ACVRLK1, activin A receptor type II-like 1, Activin A receptor, type II-like kinase 1, ALK1, TSR-I, TGF-B superfamily receptor type I, activin A receptor, type II-like kinase 1, serine/threonine-protein kinase receptor R3

Official Symbol: ACVRL1

Accession Number(s): NP_000011.2; NP_001070869.1

Human GeneID(s): [94](#)

Important Comments: Please note that this product is not to be confused with the similarly named ALK (anaplastic lymphoma kinase, GeneID 238). Reported variant represent identical protein: NP_000011.2; NP_001070869.1

Immunogen

Peptide with sequence C-KISNSPEKPKVIQ, from the C Terminus of the protein sequence according to NP_000011.2; NP_001070869.1.

Please note the [peptide](#) is available for sale.

Purification and Storage

Purified from goat serum by ammonium sulphate precipitation followed by antigen affinity chromatography using the immunizing peptide.

Supplied at 0.5 mg/ml in Tris saline, 0.02% sodium azide, pH7.3 with 0.5% bovine serum albumin.

Aliquot and store at -20°C. Minimize freezing and thawing.

Applications Tested

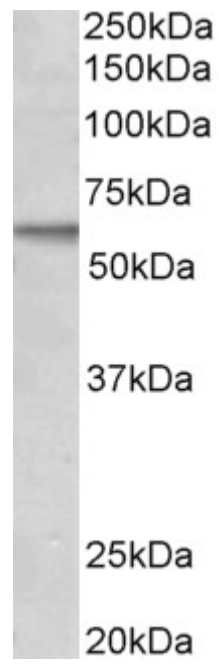
Peptide ELISA: antibody detection limit dilution 1:32000.

Western blot: Approx 60kDa band observed in lysates of cell line MCF7 (calculated MW of 56.1kDa according to NP_000011.2). Recommended concentration: 1-3µg/ml.

Species Reactivity

Tested: Human

Expected from sequence similarity: Human



EB06267 (2 μ g/ml) staining of MCF7 lysate (35 μ g protein in RIPA buffer). Primary incubation was 1 hour.
Detected by chemiluminescence.