



## UK Office

### Everest Biotech Ltd

Cherwell Innovation Centre  
77 Heyford Park  
Upper Heyford  
Oxfordshire  
OX25 5HD  
UK

Enquiries:

[info@everestbiotech.com](mailto:info@everestbiotech.com)

Sales:

[sales@everestbiotech.com](mailto:sales@everestbiotech.com)

Tech support:

[support@everestbiotech.com](mailto:support@everestbiotech.com)

Tel: +44 (0)1869 238326

Fax: +44 (0)1869 238327

## US Office

### Everest Biotech c/o Abcore

405 Maple Street, Suite A106  
Ramona,  
CA 92065  
USA

Inquiries:

[info@everestbiotech.com](mailto:info@everestbiotech.com)

Sales:

[usasales@everestbiotech.com](mailto:usasales@everestbiotech.com)

Tech support:

[support@everestbiotech.com](mailto:support@everestbiotech.com)

Tel: 888-320-4628 (toll-free)

Fax: 888-841-9041

[www.everestbiotech.com](http://www.everestbiotech.com)

**Research Use Only. Not for  
diagnostic or therapeutic use.**

## EB08207 - Goat Anti-ACVR1 Antibody

Size: 100µg specific antibody in 200µl



### Target Protein

**Principal Names:** ACVR1, activin A receptor, type I, ACTRI, ACVRLK2, ALK2, FOP, SKR1, activin A receptor, type II-like kinase 2, activin A type I receptor, hydroxyalkyl-protein kinase

**Official Symbol:** ACVR1

**Accession Number(s):** NP\_001096.1

**Human GeneID(s):** [90](#)

**Non-Human GeneID(s):** 11477 (mouse), 79558 (rat)

**Important Comments:** Reported variants represent identical protein: NP\_001096.1, NP\_001104537.1

### Immunogen

Peptide with sequence C-RKFKRRNQERLNPRD, from the internal region of the protein sequence according to NP\_001096.1.

Please note the [peptide](#) is available for sale.

### Purification and Storage

Purified from goat serum by ammonium sulphate precipitation followed by antigen affinity chromatography using the immunizing peptide.

Supplied at 0.5 mg/ml in Tris saline, 0.02% sodium azide, pH7.3 with 0.5% bovine serum albumin.

Aliquot and store at -20°C. Minimize freezing and thawing.

### Applications Tested

**Peptide ELISA:** antibody detection limit dilution 1:128000.

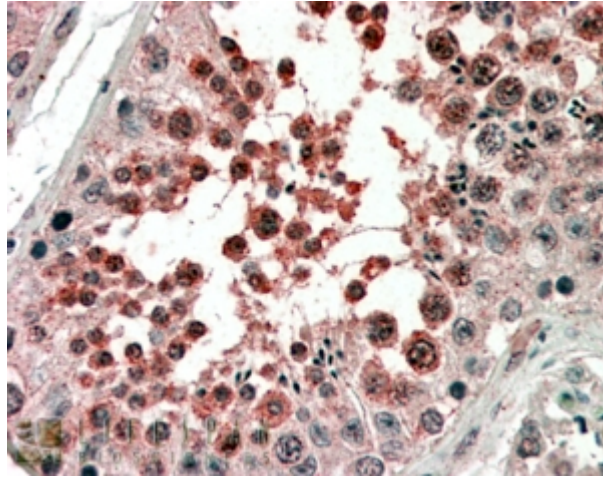
**Western blot:** Approx 60kDa band observed in Human Umbilical Cord lysates (calculated MW of 57.2kDa according to NP\_001096.1). Recommended concentration: 0.3-1µg/ml.

**IHC:** In paraffin embedded Human Testis shows preferential staining of cytoplasm in primary spermatocytes.. Recommended concentration, 4-6µg/ml.

### Species Reactivity

**Tested:** Human

**Expected from sequence similarity:** Human, Mouse, Rat, Dog



EB08207 (4µg/ml) staining of paraffin embedded Human Testis. Steamed antigen retrieval with citrate buffer pH 6, AP-staining.



EB08207 (0.3µg/ml) staining of Human Umbilical Cord lysate (35µg protein in RIPA buffer). Primary incubation was 1 hour. Detected by chemiluminescence.