



## International Office

### Everest Biotech Ltd

Vector Laboratories, Inc.  
6737 Mowry Ave  
Newark, CA 94560  
United States

Customer Service:

[customerservice@vectorlabs.com](mailto:customerservice@vectorlabs.com)

Technical Service:

[technical@vectorlabs.com](mailto:technical@vectorlabs.com)

Tel: +1 (800) 227-6666

[www.everestbiotech.com](http://www.everestbiotech.com)

**Research Use Only. Not for  
diagnostic or therapeutic use.**

## EB11059 - Goat Anti-ADAM12 (aa225-239)

### Antibody

Size: 100µg specific antibody in 200µl



### Target Protein

**Principal Names:** ADAM metallopeptidase domain 12, disintegrin and metalloproteinase domain-containing protein 12, MCMP, MCMPMitna, meltrin-alpha, MLTN, MLTNA, ADAM12

**Official Symbol:** ADAM12

**Accession Number(s):** NP\_003465.3; NP\_067673.2

**Human GeneID(s):** [8038](#)

**Non-Human GeneID(s):** 11489 (mouse), 679837 (rat)

**Important Comments:** This antibody is expected to recognize both reported isoforms (NP\_003465.3; NP\_067673.2).

### Immunogen

Peptide with sequence C-REFQRQGKDLEKVKQ, from the internal region of the protein sequence according to NP\_003465.3; NP\_067673.2.

Please note the [peptide](#) is available for sale.

### Purification and Storage

Purified from goat serum by ammonium sulphate precipitation followed by antigen affinity chromatography using the immunizing peptide.

Supplied at 0.5 mg/ml in Tris saline, 0.02% sodium azide, pH7.3 with 0.5% bovine serum albumin.

Aliquot and store at -20°C. Minimize freezing and thawing.

### Applications Tested

**Peptide ELISA:** antibody detection limit dilution 1:128000.

**Western blot:** Approx 100kDa band observed in Human Heart lysates and approx 90+60kDa bands observed in Mouse, Rat and Pig Heart lysates (calculated MW of 99.5kDa according to NP\_003465.3 and of 80.4kDa according to NP\_067673.2).

Recommended concentration: 0.1-0.3µg/ml.

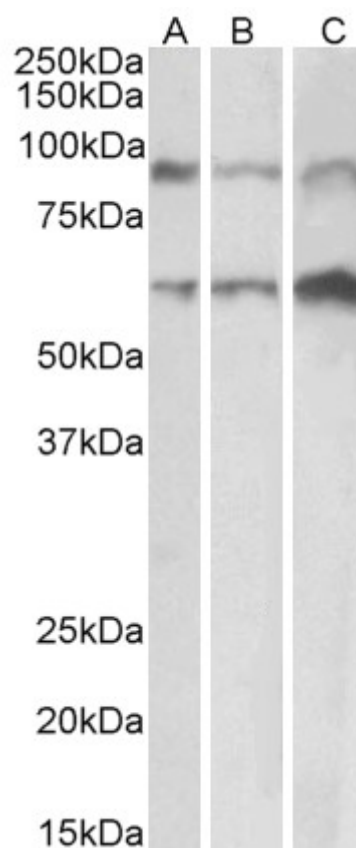
### Species Reactivity

**Tested:** Human, Mouse, Rat, Pig

**Expected from sequence similarity:** Human, Mouse, Rat, Pig, Cow



EB11059 (0.1µg/ml) staining of Human Heart lysate (35µg protein in RIPA buffer). Primary incubation was 1 hour. Detected by chemiluminescence.



EB11059 (0.1µg/ml) staining of Mouse (A), Rat (B) and Pig (C) Heart lysate (35µg protein in RIPA buffer). Primary incubation was 1 hour. Detected by chemiluminescence.