



## UK Office

### Everest Biotech Ltd

Cherwell Innovation Centre  
77 Heyford Park  
Upper Heyford  
Oxfordshire  
OX25 5HD  
UK

Enquiries:

[info@everestbiotech.com](mailto:info@everestbiotech.com)

Sales:

[sales@everestbiotech.com](mailto:sales@everestbiotech.com)

Tech support:

[support@everestbiotech.com](mailto:support@everestbiotech.com)

Tel: +44 (0)1869 238326

Fax: +44 (0)1869 238327

## US Office

### Everest Biotech c/o Abcore

405 Maple Street, Suite A106  
Ramona,  
CA 92065  
USA

Inquiries:

[info@everestbiotech.com](mailto:info@everestbiotech.com)

Sales:

[usasales@everestbiotech.com](mailto:usasales@everestbiotech.com)

Tech support:

[support@everestbiotech.com](mailto:support@everestbiotech.com)

Tel: 888-320-4628 (toll-free)

Fax: 888-841-9041

[www.everestbiotech.com](http://www.everestbiotech.com)

**Research Use Only. Not for diagnostic or therapeutic use.**

## EB05382 - Goat Anti-ADAM17 / TACE Antibody

Size: 100µg specific antibody in 200µl



### Target Protein

**Principal Names:** ADAM17, TACE, a disintegrin and metalloproteinase domain 17 (tumor necrosis factor, alpha, converting enzyme), CSVp, cSVP, CD156b, CD156b, MGC71942, TACE, cSVPADAM metalloproteinase domain 17, TNF-alpha converting enzyme, a disintegrin and metalloproteinase domain 17, a disintegrin and metalloproteinase domain 17 (tumor necrosis factor, alpha, converting enzyme), snake venom-like protease, ADAM metalloproteinase domain 17, ADAM18, CD156B, ADAM metalloproteinase domain 18, snake venom-like protease, tumor necrosis factor, alpha, converting enzyme

**Official Symbol:** ADAM17

**Accession Number(s):** NP\_003174.3

**Human GeneID(s):** [6868](#)

**Non-Human GeneID(s):** 11491 (mouse)

**Important Comments:** This antibody is expected to recognise isoform 1 (represented by NP\_003174.3) and not isoform 2 (represented by NP\_068604).

### Immunogen

Peptide with sequence LQRQNRVDSKETEC, from the C Terminus of the protein sequence according to NP\_003174.3.

Please note the [peptide](#) is available for sale.

### Purification and Storage

Purified from goat serum by ammonium sulphate precipitation followed by antigen affinity chromatography using the immunizing peptide.

Supplied at 0.5 mg/ml in Tris saline, 0.02% sodium azide, pH7.3 with 0.5% bovine serum albumin.

Aliquot and store at -20°C. Minimize freezing and thawing.

### Applications Tested

**Peptide ELISA:** antibody detection limit dilution 1:32000.

**Western blot:** Approx 125-130kDa band observed in HeLa, Jurkat and U937 lysates (predicted MW of kDa according to NP\_003174.3 but glycosylated). Recommended for use at 0.1-1µg/ml. Primary incubation was for 1 hour. The observed molecular weights correspond to earlier findings in literature with different antibodies (Le Gall et al, J Cell Sci. 2010 Nov 15;123(Pt22):3913-22; PMID: 20980382)

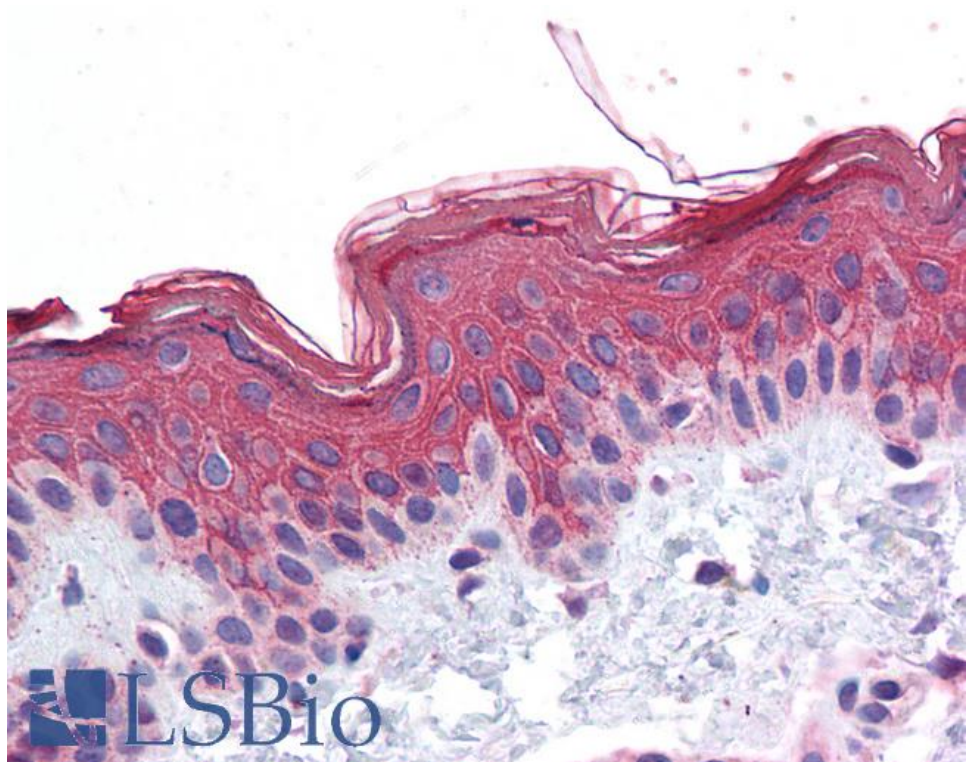
### Species Reactivity

**Tested:** Human

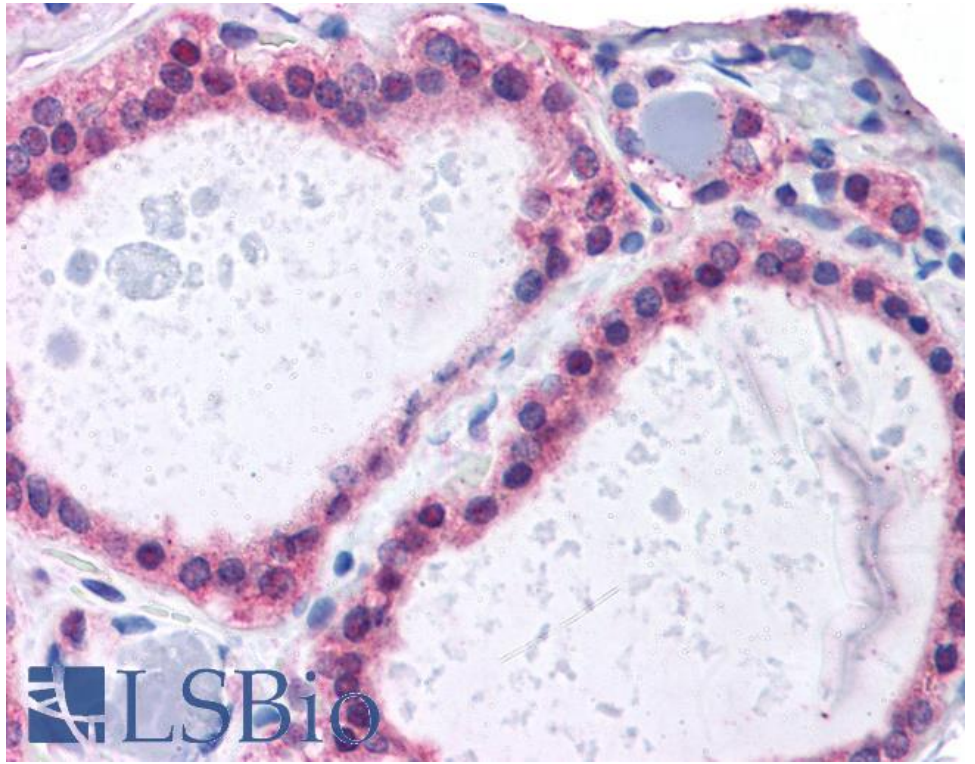
**Expected from sequence similarity:** Human, Mouse, Rat



EB05382 staining (0.2 $\mu$ g/ml) of Human HeLa lysate (RIPA buffer, 35 $\mu$ g total protein per lane). Detected by chemiluminescence.



EB05382 (3.75 $\mu$ g/ml) staining of paraffin embedded Human Skin. Steamed antigen retrieval with citrate buffer pH 6, AP-staining. **This data is from a previous batch, not on sale.**



EB05382 (3.75 $\mu$ g/ml) staining of paraffin embedded Human Thyroid. Steamed antigen retrieval with citrate buffer pH 6, AP-staining. **This data is from a previous batch, not on sale.**