



## UK Office

### Everest Biotech Ltd

Cherwell Innovation Centre  
77 Heyford Park  
Upper Heyford  
Oxfordshire  
OX25 5HD  
UK

Enquiries:

[info@everestbiotech.com](mailto:info@everestbiotech.com)

Sales:

[sales@everestbiotech.com](mailto:sales@everestbiotech.com)

Tech support:

[support@everestbiotech.com](mailto:support@everestbiotech.com)

Tel: +44 (0)1869 238326

[www.everestbiotech.com](http://www.everestbiotech.com)

**Research Use Only. Not for  
diagnostic or therapeutic use.**

## EB08054 - Goat Anti-Adenosine A1 receptor Antibody

Size: 100µg specific antibody in 200µl



### Target Protein

**Principal Names:** ADORA1, adenosine A1 receptor, RDC7

**Official Symbol:** ADORA1

**Accession Number(s):** NP\_000665.1; NP\_001351994.1; NP\_001351995.1

**Human GeneID(s):** [134](#)

**Non-Human GeneID(s):** 11539 (mouse), 29290 (rat)

**Important Comments:** This antibody is expected to recognise isoforms 1, 2 and 3.

### Immunogen

Peptide with sequence NDHFRCQPAPPIDED, from the C Terminus of the protein sequence according to NP\_000665.1; NP\_001351994.1; NP\_001351995.1.

Please note the [peptide](#) is available for sale.

### Purification and Storage

Purified from goat serum by ammonium sulphate precipitation followed by antigen affinity chromatography using the immunizing peptide.

Supplied at 0.5 mg/ml in Tris saline, 0.02% sodium azide, pH7.3 with 0.5% bovine serum albumin.

Aliquot and store at -20°C. Minimize freezing and thawing.

### Applications Tested

**Peptide ELISA:** antibody detection limit dilution 1:64000.

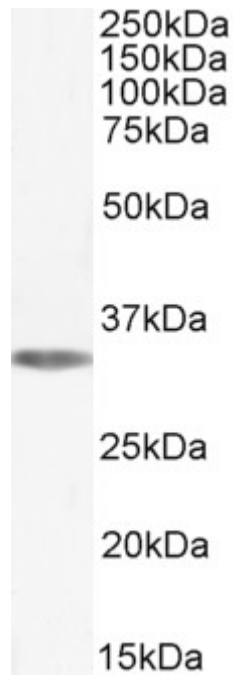
**Western blot:** Approx 35kDa band observed in lysates of cell line HEK293 (calculated MW of 36.5kDa according to NP\_000665.1). Recommended concentration:0.1-0.3µg/ml. Primary incubation 1 hour at room temperature.

**Flow Cytometry:** Flow cytometric analysis of HeLa cells. Recommended concentration: 10ug/ml.

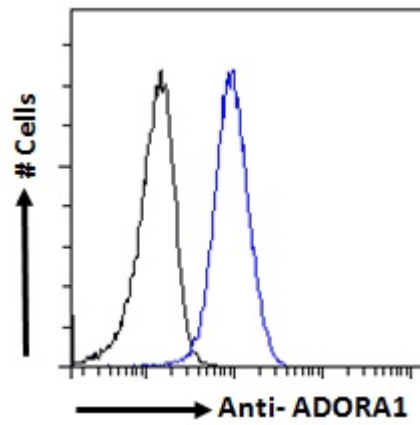
### Species Reactivity

**Tested:** Human

**Expected from sequence similarity:** Human



EB08054 (0.1 $\mu$ g/ml) staining of HEK293 cell lysate (35 $\mu$ g protein in RIPA buffer). Detected by chemiluminescence.



EB08054 Flow cytometric analysis of paraformaldehyde fixed HeLa cells (blue line), permeabilized with 0.5% Triton. Primary incubation 1hr (10 $\mu$ g/ml) followed by Alexa Fluor 488 secondary antibody (1 $\mu$ g/ml). IgG control: Unimmunized goat IgG (black line) followed by Alexa Fluor 488 secondary antibody.