



UK Office

Everest Biotech Ltd

Cherwell Innovation Centre
77 Heyford Park
Upper Heyford
Oxfordshire
OX25 5HD
UK

Enquiries:

info@everestbiotech.com

Sales:

sales@everestbiotech.com

Tech support:

support@everestbiotech.com

Tel: +44 (0)1869 238326

Fax: +44 (0)1869 238327

US Office

Everest Biotech c/o Abcore

405 Maple Street, Suite A106
Ramona,
CA 92065
USA

Inquiries:

info@everestbiotech.com

Sales:

usasales@everestbiotech.com

Tech support:

support@everestbiotech.com

Tel: 888-320-4628 (toll-free)

Fax: 888-841-9041

www.everestbiotech.com

**Research Use Only. Not for
diagnostic or therapeutic use.**

EB08054 - Goat Anti-Adenosine A1 receptor Antibody

Size: 100µg specific antibody in 200µl



Target Protein

Principal Names: ADORA1, adenosine A1 receptor, RDC7

Official Symbol: ADORA1

Accession Number(s): NP_000665.1; NP_001351994.1; NP_001351995.1

Human GeneID(s): [134](#)

Non-Human GeneID(s): 11539 (mouse), 29290 (rat)

Important Comments: This antibody is expected to recognise isoforms 1, 2 and 3.

Immunogen

Peptide with sequence NDHFRCQPAPPIDED, from the C Terminus of the protein sequence according to NP_000665.1; NP_001351994.1; NP_001351995.1.

Please note the [peptide](#) is available for sale.

Purification and Storage

Purified from goat serum by ammonium sulphate precipitation followed by antigen affinity chromatography using the immunizing peptide.

Supplied at 0.5 mg/ml in Tris saline, 0.02% sodium azide, pH7.3 with 0.5% bovine serum albumin.

Aliquot and store at -20°C. Minimize freezing and thawing.

Applications Tested

Peptide ELISA: antibody detection limit dilution 1:64000.

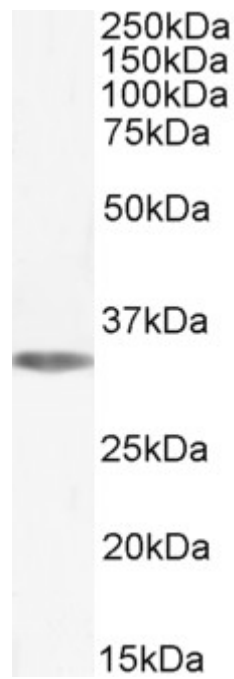
Western blot: Approx 35kDa band observed in lysates of cell line HEK293 (calculated MW of 36.5kDa according to NP_000665.1). Recommended concentration: 0.1-0.3µg/ml. Primary incubation 1 hour at room temperature.

Flow Cytometry: Flow cytometric analysis of HeLa cells. Recommended concentration: 10ug/ml.

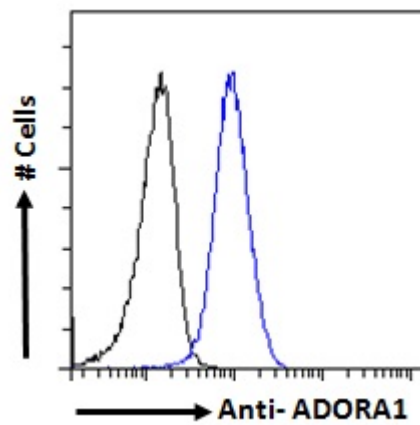
Species Reactivity

Tested: Human

Expected from sequence similarity: Human



EB08054 (0.1 μ g/ml) staining of HEK293 cell lysate (35 μ g protein in RIPA buffer). Detected by chemiluminescence.



EB08054 Flow cytometric analysis of paraformaldehyde fixed HeLa cells (blue line), permeabilized with 0.5% Triton. Primary incubation 1hr (10 μ g/ml) followed by Alexa Fluor 488 secondary antibody (1 μ g/ml). IgG control: Unimmunized goat IgG (black line) followed by Alexa Fluor 488 secondary antibody.