

International Office

Everest Biotech Ltd

Vector Laboratories, Inc.
6737 Mowry Ave
Newark, CA 94560
United States

Customer Service:

customerservice@vectorlabs.com

Technical Service:

technical@vectorlabs.com

Tel: +1 (800) 227-6666

www.everestbiotech.com

**Research Use Only. Not for
diagnostic or therapeutic use.**

EB11923 - Goat Anti-ADRA1A Antibody

Size: 100µg specific antibody in 200µl



Target Protein

Principal Names: ADRA1A, adrenergic, alpha-1A-, receptor, ADRA1C, ADRA1L1, ALPHA1AAR, G protein coupled receptor, OTTHUMP00000125310, OTTHUMP00000125311, OTTHUMP00000125312, OTTHUMP00000125313, adrenergic, alpha-1A-, receptor variant 1, adrenergic, alpha-1A-, receptor variant 3, adrenergic, alpha-1A-, receptor variant 5, adrenergic, alpha-1A-, receptor variant 8, alpha-1A adrenergic receptor, alpha-1A adrenoceptor, alpha-1A adrenoreceptor, alpha-1C adrenergic receptor

Official Symbol: ADRA1A

Accession Number(s): NP_000671.2

Human GeneID(s): [148](#)

Important Comments: This antibody is expected to recognize isoform 1 (NP_000671.2) only.

Immunogen

Peptide with sequence C-PSLDKNHQVPTIK, from the C Terminus of the protein sequence according to NP_000671.2.

Please note the [peptide](#) is available for sale.

Purification and Storage

Purified from goat serum by ammonium sulphate precipitation followed by antigen affinity chromatography using the immunizing peptide.

Supplied at 0.5 mg/ml in Tris saline, 0.02% sodium azide, pH7.3 with 0.5% bovine serum albumin.

Aliquot and store at -20°C. Minimize freezing and thawing.

Applications Tested

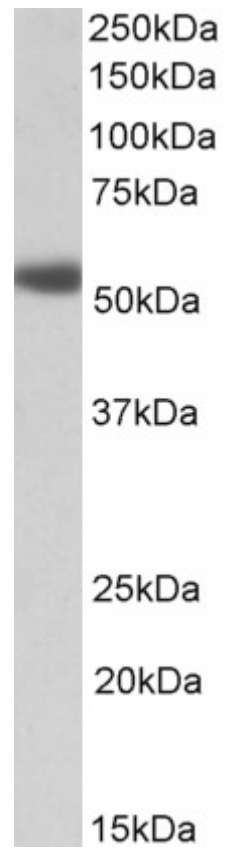
Peptide ELISA: antibody detection limit dilution 1:16000.

Western blot: Approx 55kDa band observed in Human Heart and Prostate lysates (calculated MW of 51.5kDa according to NP_000671.2). Recommended concentration: 1-3µg/ml.

Species Reactivity

Tested: Human

Expected from sequence similarity: Human



EB11923 (1µg/ml) staining of Human Prostate lysate (35µg protein in RIPA buffer). Primary incubation was 1 hour. Detected by chemiluminescence.