



UK Office

Everest Biotech Ltd

Cherwell Innovation Centre
77 Heyford Park
Upper Heyford
Oxfordshire
OX25 5HD
UK

Enquiries:

info@everestbiotech.com

Sales:

sales@everestbiotech.com

Tech support:

support@everestbiotech.com

Tel: +44 (0)1869 238326

Fax: +44 (0)1869 238327

US Office

Everest Biotech c/o Abcore

405 Maple Street, Suite A106
Ramona,
CA 92065
USA

Inquiries:

info@everestbiotech.com

Sales:

usasales@everestbiotech.com

Tech support:

support@everestbiotech.com

Tel: 888-320-4628 (toll-free)

Fax: 888-841-9041

www.everestbiotech.com

**Research Use Only. Not for
diagnostic or therapeutic use.**

EB11919 - Goat Anti-ADRA1B Antibody

Size: 100µg specific antibody in 200µl



Target Protein

Principal Names: ADRA1B, adrenergic, alpha-1B-, receptor, ADRA1, ALPHA1BAR, OTTHUMP00000160844, alpha-1B adrenergic receptor, alpha-1B adrenoceptor, alpha-1B adrenoreceptor, alpha-1B-adrenergic receptor

Official Symbol: ADRA1B

Accession Number(s): NP_000670.1

Human GeneID(s): [147](#)

Non-Human GeneID(s): 11548 (mouse), 24173 (rat)

Immunogen

Peptide with sequence C-SSTKAKGHNPRSS, from the internal region of the protein sequence according to NP_000670.1.

Please note the [peptide](#) is available for sale.

Purification and Storage

Purified from goat serum by ammonium sulphate precipitation followed by antigen affinity chromatography using the immunizing peptide.

Supplied at 0.5 mg/ml in Tris saline, 0.02% sodium azide, pH7.3 with 0.5% bovine serum albumin.

Aliquot and store at -20°C. Minimize freezing and thawing.

Applications Tested

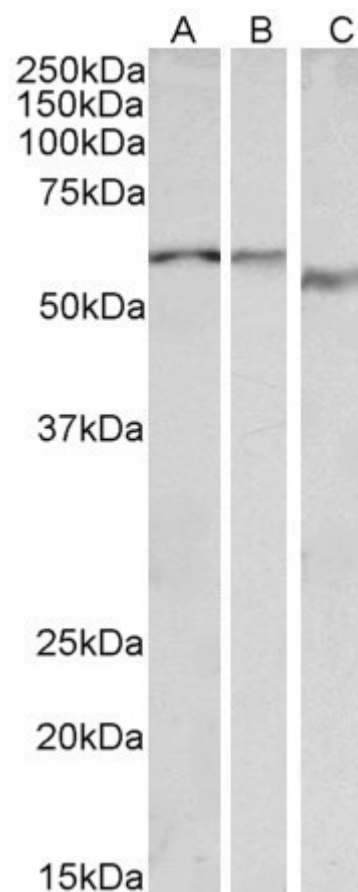
Peptide ELISA: antibody detection limit dilution 1:128000.

Western blot: Approx 55-60kDa band observed in Human, Mouse, Rat and Pig Heart lysates (calculated MW of 56.8kDa according to NP_000670.1). Recommended concentration: 0.1-0.3µg/ml.

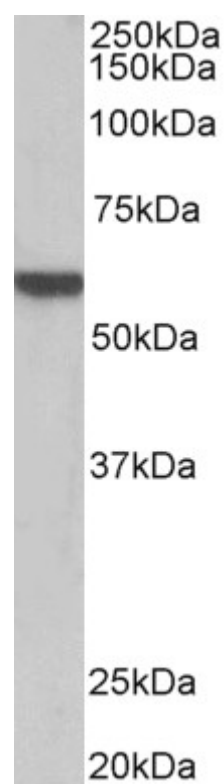
Species Reactivity

Tested: Human, Mouse, Rat, Pig

Expected from sequence similarity: Human, Mouse, Rat, Dog, Pig, Cow



EB11919 (0.1 μ g/ml) staining of Human Heart lysate (35 μ g protein in RIPA buffer). Primary incubation was 1 hour. Detected by chemiluminescence.



EB11919 (0.1 μ g/ml) staining of Pig Heart lysate (35 μ g protein in RIPA buffer). Primary incubation was 1 hour. Detected by chemiluminescence.