



## UK Office

### Everest Biotech Ltd

Cherwell Innovation Centre  
77 Heyford Park  
Upper Heyford  
Oxfordshire  
OX25 5HD  
UK

Enquiries:

[info@everestbiotech.com](mailto:info@everestbiotech.com)

Sales:

[sales@everestbiotech.com](mailto:sales@everestbiotech.com)

Tech support:

[support@everestbiotech.com](mailto:support@everestbiotech.com)

Tel: +44 (0)1869 238326

Fax: +44 (0)1869 238327

## US Office

### Everest Biotech c/o Abcore

405 Maple Street, Suite A106  
Ramona,  
CA 92065  
USA

Inquiries:

[info@everestbiotech.com](mailto:info@everestbiotech.com)

Sales:

[usasales@everestbiotech.com](mailto:usasales@everestbiotech.com)

Tech support:

[support@everestbiotech.com](mailto:support@everestbiotech.com)

Tel: 888-320-4628 (toll-free)

Fax: 888-841-9041

[www.everestbiotech.com](http://www.everestbiotech.com)

**Research Use Only. Not for  
diagnostic or therapeutic use.**

## EB10957 - Goat Anti-AES Antibody

Size: 100µg specific antibody in 200µl



### Target Protein

**Principal Names:** AES, amino-terminal enhancer of split, AES-1, AES-2, ESP1, GRG, GRG5, TLE5, amino enhancer of split, gp130-associated protein GAM

**Official Symbol:** AES

**Accession Number(s):** NP\_945320.1; NP\_001121.2; NP\_945321.1

**Human GeneID(s):** [166](#)

**Non-Human GeneID(s):** 14797 (mouse), 29466 (rat)

**Important Comments:** This antibody is expected to recognize all reported isoforms (NP\_945320.1; NP\_001121.2; NP\_945321.1).

### Immunogen

Peptide with sequence SHLPQQLKFTTSD-C, from the N Terminus of the protein sequence according to NP\_945320.1; NP\_001121.2; NP\_945321.1.

Please note the [peptide](#) is available for sale.

### Purification and Storage

Purified from goat serum by ammonium sulphate precipitation followed by antigen affinity chromatography using the immunizing peptide.

Supplied at 0.5 mg/ml in Tris saline, 0.02% sodium azide, pH7.3 with 0.5% bovine serum albumin.

Aliquot and store at -20°C. Minimize freezing and thawing.

### Applications Tested

**Peptide ELISA:** antibody detection limit dilution 1:64000.

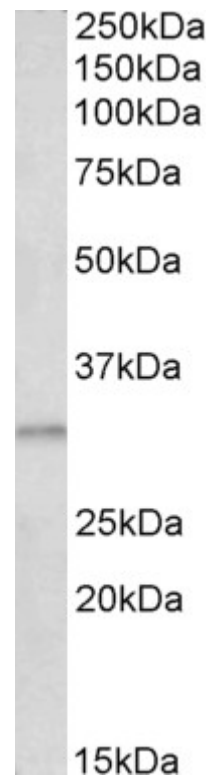
**Western blot:** Approx 30kDa band observed in Human Brain (Cerebellum and Cerebral Cortex) lysates (calculated MW of 29.1kDa according to NP\_945320.1). Recommended concentration: 0.3-1µg/ml.

**IHC:** Paraffin embedded Human Colon. Recommended concentration: 3.75µg/ml.

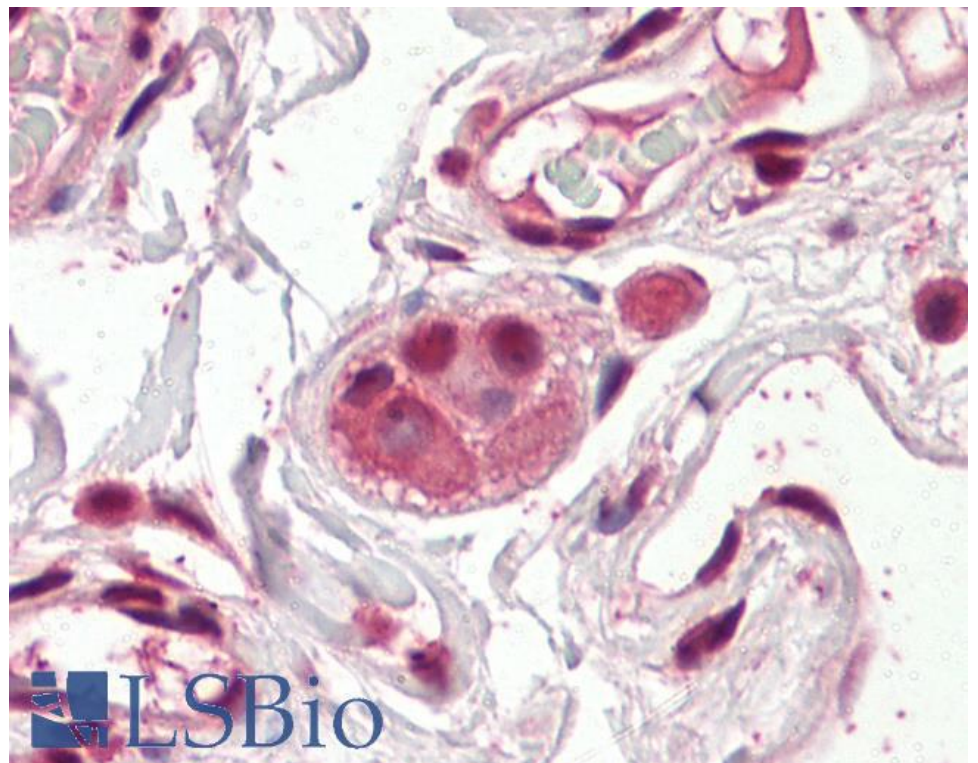
### Species Reactivity

**Tested:** Human

**Expected from sequence similarity:** Human, Mouse, Rat



EB10957 (0.3 $\mu$ g/ml) staining of Human Cerebral Cortex lysate (35 $\mu$ g protein in RIPA buffer). Primary incubation was 1 hour. Detected by chemiluminescence.



EB10957 (3.75 $\mu$ g/ml) staining of paraffin embedded Human Colon. Steamed antigen retrieval with citrate buffer pH 6, AP-staining.