



International Office

Everest Biotech Ltd

Vector Laboratories, Inc.
6737 Mowry Ave
Newark, CA 94560
United States

Customer Service:

customerservice@vectorlabs.com

Technical Service:

technical@vectorlabs.com

Tel: +1 (800) 227-6666

www.everestbiotech.com

**Research Use Only. Not for
diagnostic or therapeutic use.**

EB09538 - Goat Anti-Afamin / alpha Albumin Antibody

Size: 100µg specific antibody in 200µl



Target Protein

Principal Names: AFM, afamin, ALB2, ALBA, ALF, MGC125338, MGC125339,
alpha-albumin

Official Symbol: AFM

Accession Number(s): NP_001124.1

Human GeneID(s): [173](#)

Non-Human GeneID(s): 75547 (mouse), 293024 (rat)

Immunogen

Peptide with sequence C-NKDDRPKDLRLRE, from the internal region of the protein
sequence according to NP_001124.1.

Please note the [peptide](#) is available for sale.

Purification and Storage

Purified from goat serum by ammonium sulphate precipitation followed by antigen affinity
chromatography using the immunizing peptide.

Supplied at 0.5 mg/ml in Tris saline, 0.02% sodium azide, pH7.3 with 0.5% bovine serum
albumin.

Aliquot and store at -20°C. Minimize freezing and thawing.

Applications Tested

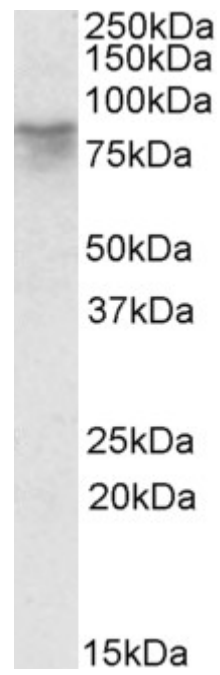
Peptide ELISA: antibody detection limit dilution 1:16000.

Western blot: Approx 80kDa band observed in Human Brain (Cerebellum and Cerebral
Cortex) lysates (calculated MW of 69.1kDa according to NP_001124.1). Recommended
concentration: 0.3-1µg/ml.

Species Reactivity

Tested: Human

Expected from sequence similarity: Human, Mouse, Rat, Dog, Cow



EB09538 (0.3 μ g/ml) staining of Human Cerebellum lysate (35 μ g protein in RIPA buffer). Primary incubation was 1 hour. Detected by chemiluminescence.