

UK Office

Everest Biotech Ltd

Cherwell Innovation Centre
77 Heyford Park
Upper Heyford
Oxfordshire
OX25 5HD
UK

Enquiries:

info@everestbiotech.com

Sales:

sales@everestbiotech.com

Tech support:

support@everestbiotech.com

Tel: +44 (0)1869 238326

Fax: +44 (0)1869 238327

US Office

Everest Biotech c/o Abcore

405 Maple Street, Suite A106
Ramona,
CA 92065
USA

Inquiries:

info@everestbiotech.com

Sales:

usasales@everestbiotech.com

Tech support:

support@everestbiotech.com

Tel: 888-320-4628 (toll-free)

Fax: 888-841-9041

www.everestbiotech.com

**Research Use Only. Not for
diagnostic or therapeutic use.**

EB06725 - Goat Anti-AGRP / Agouti-related protein Antibody

Size: 100µg specific antibody in 200µl



Target Protein

Principal Names: AGRP, ART, AGRT, ASIP2, agouti related protein homolog (mouse), agouti (mouse) related protein, Agouti-related transcript, mouse, homolog of, MGC118963, agouti related protein homolog

Official Symbol: AGRP

Accession Number(s): NP_001129.1; NP_015531.1

Human GeneID(s): [181](#)

Important Comments: This antibody is expected to recognise both reported isoforms (as represented by NP_001129; NP_015531)

Immunogen

Peptide with sequence CRKLG TAMNPCSRT, from the C Terminus of the protein sequence according to NP_001129.1; NP_015531.1.

Please note the [peptide](#) is available for sale.

Purification and Storage

Purified from goat serum by ammonium sulphate precipitation followed by antigen affinity chromatography using the immunizing peptide.

Supplied at 0.5 mg/ml in Tris saline, 0.02% sodium azide, pH7.3 with 0.5% bovine serum albumin.

Aliquot and store at -20°C. Minimize freezing and thawing.

Applications Tested

Peptide ELISA: antibody detection limit dilution 1:32000.

Western blot: Preliminary experiments gave bands at approx 45kDa and 24kDa in Human Brain lysates after 0.1µg/ml antibody staining. These bands were successfully blocked by incubation with the immunizing peptide. Primary incubation 1 hour at room temperature. Please note that we cannot currently find an explanation in the literature given the calculated size of 14.4kDa according to NP_001129.1 and NP_015531.1.

IHC: Frozen section of Human Hypothalamus shows staining of a group of neuronal cell bodies in the human infundibular (arcuate) nucleus and their varicose axons.

Recommended concentration: 0.05-0.1µg/ml.

Species Reactivity

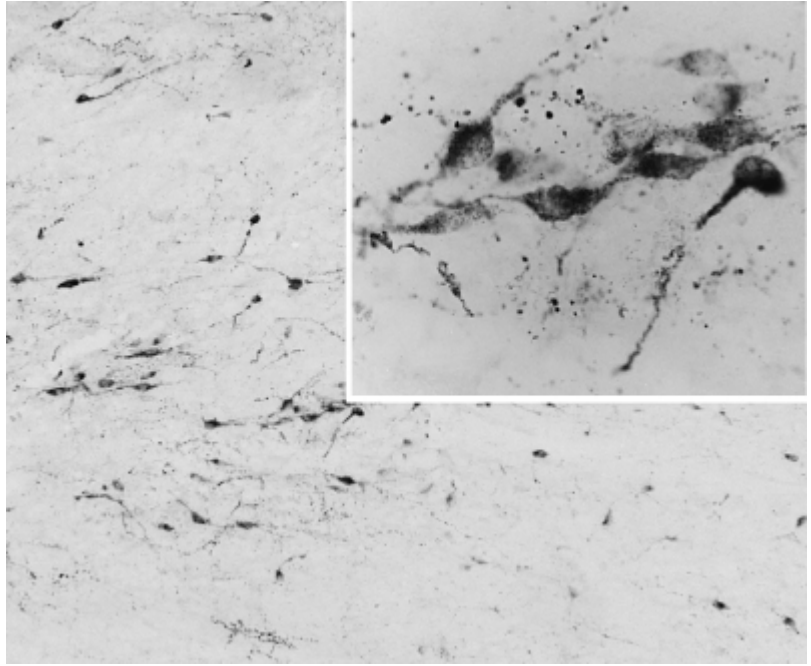
Tested: Human

Expected from sequence similarity: Human, Dog, Pig

Specific Reference

This antibody has been successfully used as a specificity control in the following paper:

Katalin Skrapits, Beáta Á Borsay, László Herczeg, Philippe Ciofi, Stephen R Bloom, Mohammad A Ghatei, Waljit S Dhillo, Zsolt Liposits, Erik Hrabovszky
Colocalization of Cocaine- and Amphetamine-Regulated Transcript with Kisspeptin and Neurokinin B in the Human Infundibular Region
PLoS One. 2014 Aug 1;9(8):e103977.
PMID: 25084101



EB06725 (0.05µg/ml) staining of PFA-perfused cryosection of Human Hypothalamus. Antigen retrieval with citrate buffer Ph 6 at 80C for 30min, HRP-staining with Ni-DAB after Biotin-SP-antigoat amplification. Data obtained by Prof. Erik Hrabovszky, Inst, Exp, Med., Budapest, Hungary.