



International Office

Everest Biotech Ltd

Vector Laboratories, Inc.
6737 Mowry Ave
Newark, CA 94560
United States

Customer Service:

customerservice@vectorlabs.com

Technical Service:

technical@vectorlabs.com

Tel: +1 (800) 227-6666

www.everestbiotech.com

**Research Use Only. Not for
diagnostic or therapeutic use.**

EB10450 - Goat Anti-AGTPBP1 / NNA1 Antibody

Size: 100µg specific antibody in 200µl



Target Protein

Principal Names: ATP/GTP binding protein 1, DKFZp686M20191, KIAA1035, NNA1, AGTPBP1

Official Symbol: AGTPBP1

Accession Number(s): NP_056054.2

Human GeneID(s): [23287](#)

Non-Human GeneID(s): 67269 (mouse), 290986 (rat)

Immunogen

Peptide with sequence C-TSPLEYNLPS, from the internal region of the protein sequence according to NP_056054.2.

Please note the [peptide](#) is available for sale.

Purification and Storage

Purified from goat serum by ammonium sulphate precipitation followed by antigen affinity chromatography using the immunizing peptide.

Supplied at 0.5 mg/ml in Tris saline, 0.02% sodium azide, pH7.3 with 0.5% bovine serum albumin.

Aliquot and store at -20°C. Minimize freezing and thawing.

Applications Tested

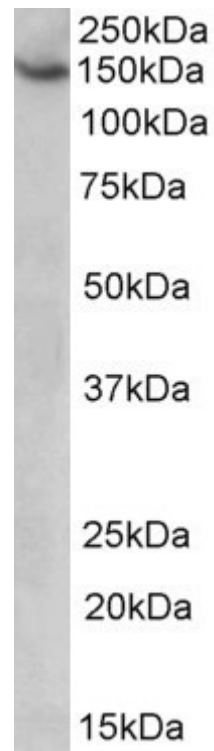
Peptide ELISA: antibody detection limit dilution 1:8000.

Western blot: Approx 150kDa band observed in lysates of cell line HeLa (calculated MW of 134kDa according to NP_056054.2). Recommended concentration: 1-3µg/ml.

Species Reactivity

Tested: Human

Expected from sequence similarity: Human, Mouse, Rat, Dog, Cow



EB10450 (1 μ g/ml) staining of HeLa lysate (35 μ g protein in RIPA buffer). Primary incubation was 1 hour.
Detected by chemiluminescence.