



UK Office

Everest Biotech Ltd

Cherwell Innovation Centre
77 Heyford Park
Upper Heyford
Oxfordshire
OX25 5HD
UK

Enquiries:

info@everestbiotech.com

Sales:

sales@everestbiotech.com

Tech support:

support@everestbiotech.com

Tel: +44 (0)1869 238326

www.everestbiotech.com

**Research Use Only. Not for
diagnostic or therapeutic use.**

EB06539 - Goat Anti-AHI1 / Jouberin Antibody

Size: 100µg specific antibody in 200µl



Target Protein

Principal Names: AHI1, AHI-1, DKFZp686J1653, FLJ14023, FLJ20069, JBTS3, ORF1, dJ71N10.1, Abelson helper integration site, jouberin, Ahi-1 isoform I, OTTHUMP00000017263, OTTHUMP00000017264, OTTHUMP00000017265, contains SH3 and WD40 domains

Official Symbol: AHI1

Accession Number(s): NP_060121.3; NP_001128304.1; NP_001337433.1

Human GeneID(s): [54806](#)

Immunogen

Peptide with sequence PTAESEAKVKTC, from the N Terminus of the protein sequence according to NP_060121.3; NP_001128304.1; NP_001337433.1.

Please note the [peptide](#) is available for sale.

Purification and Storage

Purified from goat serum by ammonium sulphate precipitation followed by antigen affinity chromatography using the immunizing peptide.

Supplied at 0.5 mg/ml in Tris saline, 0.02% sodium azide, pH7.3 with 0.5% bovine serum albumin.

Aliquot and store at -20°C. Minimize freezing and thawing.

Applications Tested

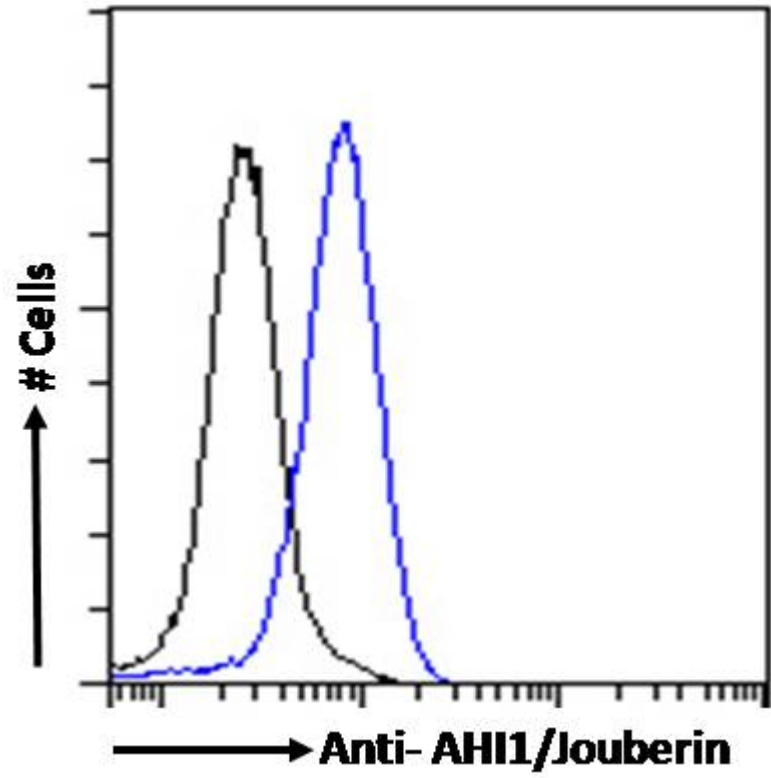
Peptide ELISA: antibody detection limit dilution 1:16000.

Flow Cytometry: Flow cytometric analysis of HeLa cells. Recommended concentration: 10ug/ml.

Species Reactivity

Tested: Human

Expected from sequence similarity: Human



EB06539 Flow cytometric analysis of paraformaldehyde fixed HeLa cells (blue line), permeabilized with 0.5% Triton. Primary incubation overnight (10ug/ml) followed by Alexa Fluor 488 secondary antibody (1ug/ml). IgG control: Unimmunized goat IgG (black line) followed by Alexa Fluor 488 secondary antibody.