

## UK Office

### Everest Biotech Ltd

Cherwell Innovation Centre  
77 Heyford Park  
Upper Heyford  
Oxfordshire  
OX25 5HD  
UK

Enquiries:

[info@everestbiotech.com](mailto:info@everestbiotech.com)

Sales:

[sales@everestbiotech.com](mailto:sales@everestbiotech.com)

Tech support:

[support@everestbiotech.com](mailto:support@everestbiotech.com)

Tel: +44 (0)1869 238326

[www.everestbiotech.com](http://www.everestbiotech.com)

**Research Use Only. Not for  
diagnostic or therapeutic use.**

## EB05393 - Goat Anti-AIBZIP / CREB3L4 Antibody

Size: 100µg specific antibody in 200µl



### Target Protein

**Principal Names:** AIBZIP, cAMP responsive element binding protein 3-like 4, JAL, hJAL, ATCE1, CREB3, CREB4, androgen-induced basic leucine zipper, RP11-422P24.8, OTTHUMP00000035266, cAMP responsive element binding protein 1

**Official Symbol:** CREB3L4

**Accession Number(s):** NP\_570968.1; NP\_001242909.1

**Human GeneID(s):** [148327](#)

**Important Comments:** This antibody is expected to recognize both reported isoforms (NP\_570968.1; NP\_001242909.1). Reported variants represent identical protein: NP\_001242908.1, NP\_570968.1, NP\_001242907.1 Reported variants represent identical protein: NP\_001242909.1, NP\_001242910.1

### Immunogen

Peptide with sequence C-PSGRIRSVLHADEM, from the C Terminus of the protein sequence according to NP\_570968.1; NP\_001242909.1.

Please note the [peptide](#) is available for sale.

### Purification and Storage

Purified from goat serum by ammonium sulphate precipitation followed by antigen affinity chromatography using the immunizing peptide.

Supplied at 0.5 mg/ml in Tris saline, 0.02% sodium azide, pH7.3 with 0.5% bovine serum albumin.

Aliquot and store at -20°C. Minimize freezing and thawing.

### Applications Tested

**Peptide ELISA:** antibody detection limit dilution 1:32000.

**Western blot:** Approx. 50kDa band observed in Human Kidney and Placenta lysate, and in lysates of cell lines MDA-MB-231, A431 and MCF7 (calculated MW of 43.4kDa according to NP\_570968.1). Recommended concentration: 0.003-0.5µg/ml. Primary incubation 1 hour at room temperature.

**IHC:** In paraffin embedded Human Prostate shows strong staining of cytoplasm in the secretory cells of the gland. Recommended concentration: 2-4µg/ml.

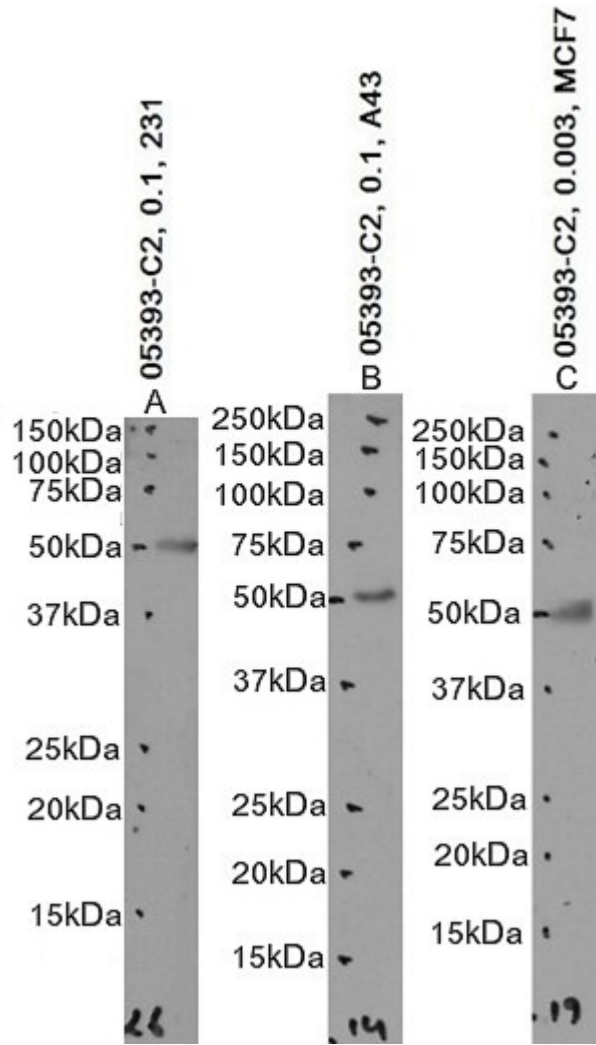
**Immunofluorescence:** Strong expression of the protein seen in A431 and U2OS cells. Recommended concentration: 10µg/ml.

**Flow Cytometry:** Flow cytometric analysis of A431 cells. Recommended concentration: 10µg/ml.

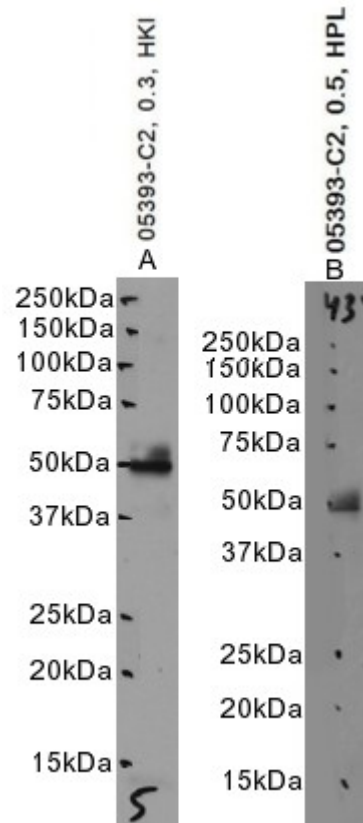
### Species Reactivity

**Tested:** Human

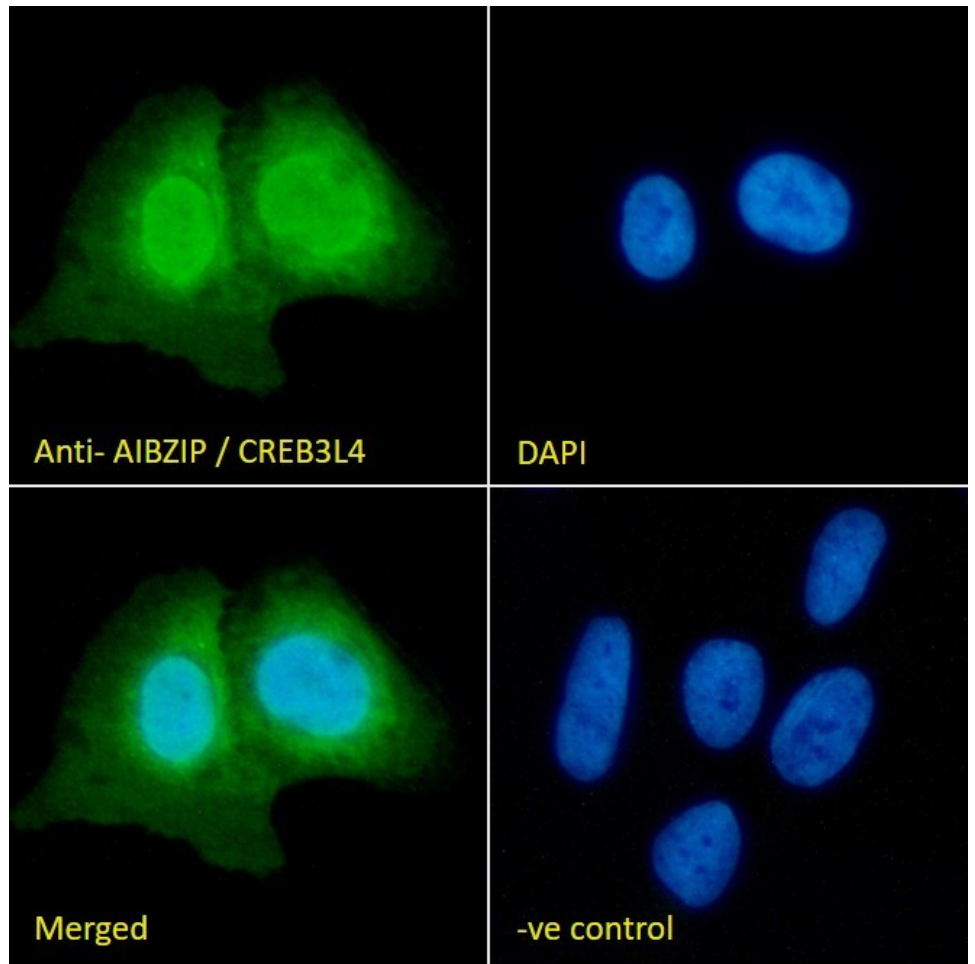
**Expected from sequence similarity:** Human



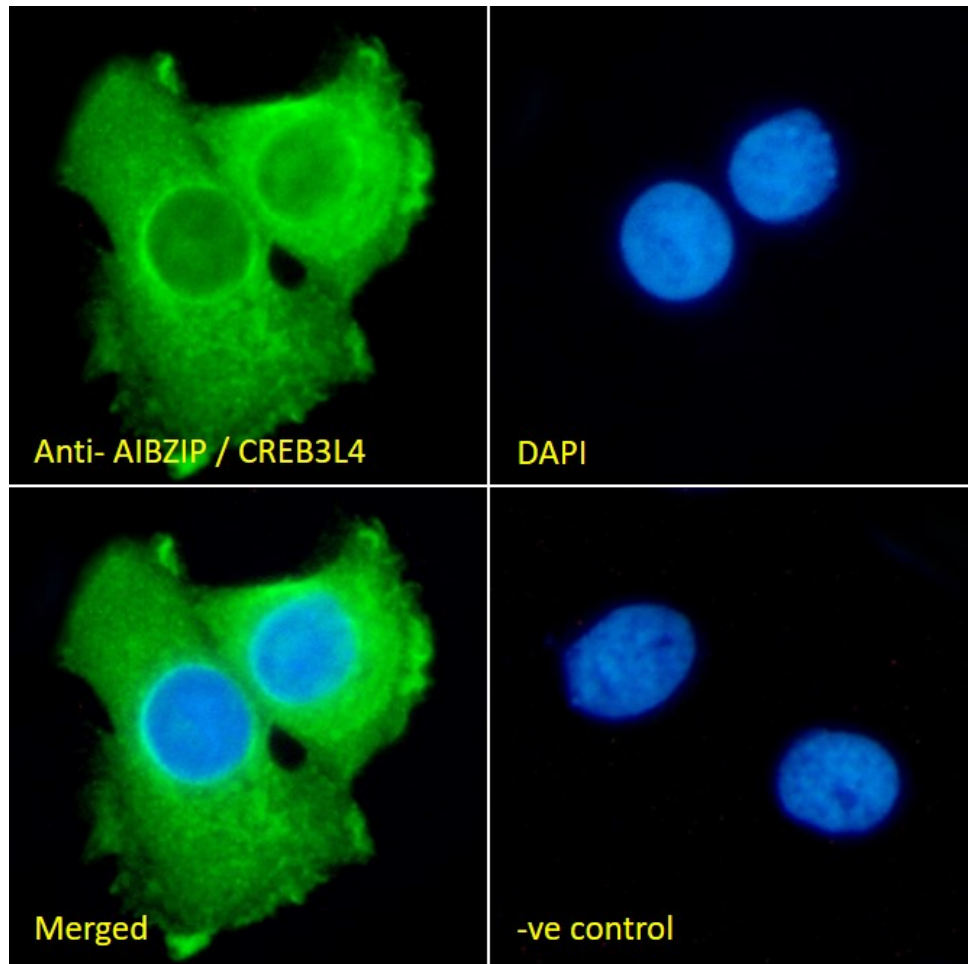
EB05393 optimised QC. Primary incubation 1 hour at room temperature.  
 Images A, B: MDA-MB-231, A431 cell lysate at primary Ab concentration 0.1µg/ml, Image  
 C: MCF7 cell lysate at primary Ab concentration 0.003µg/ml. (Loaded 35µg protein in  
 RIPA buffer, per lane). Detected by chemiluminescence.



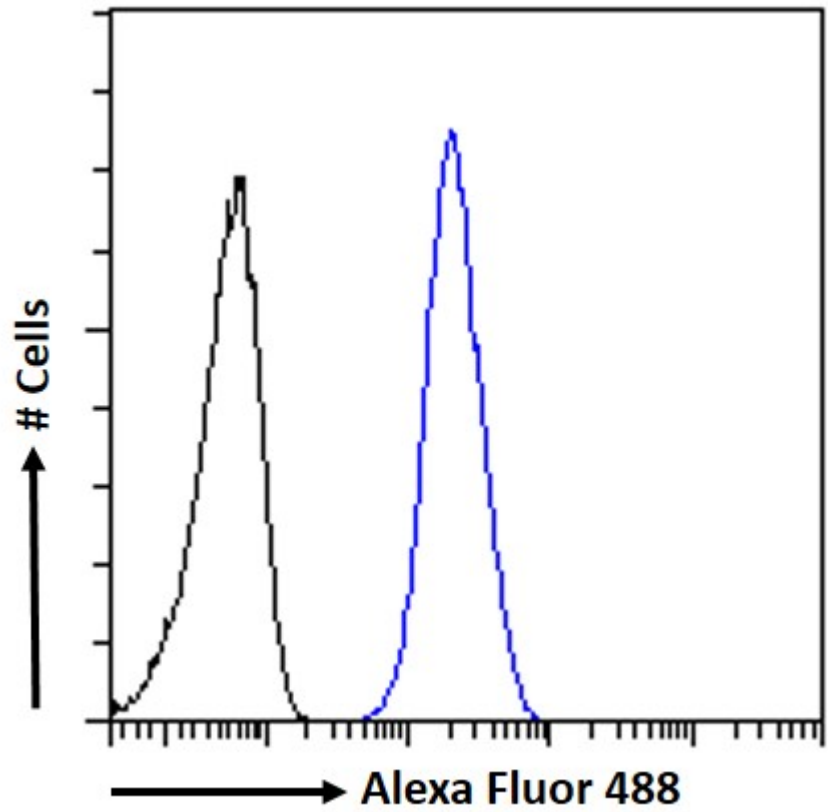
EB05393 optimised QC. Primary incubation 1 hour at room temperature.  
 Images A, B: Human Kidney and Placenta lysate at primary Ab concentration 0.5µg/ml.  
 (Loaded 35µg protein in RIPA buffer, per lane). Detected by chemiluminescence.



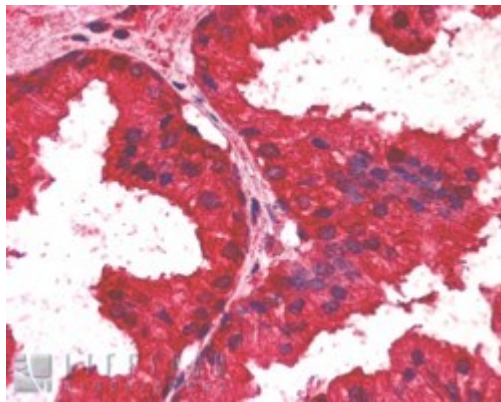
EB05393 Immunofluorescence analysis of paraformaldehyde fixed U2OS cells, permeabilized with 0.15% Triton. Primary incubation 1hr (10ug/ml) followed by Alexa Fluor 488 secondary antibody (2ug/ml), showing nuclear, nuclear membrane and cytoplasmic staining. The nuclear stain is DAPI (blue). Negative control: Unimmunized goat IgG (10ug/ml) followed by Alexa Fluor 488 secondary antibody (2ug/ml).



EB05393 Immunofluorescence analysis of paraformaldehyde fixed A431 cells, permeabilized with 0.15% Triton. Primary incubation 1hr (10ug/ml) followed by Alexa Fluor 488 secondary antibody (2ug/ml), showing nuclear membrane and cytoplasmic staining. The nuclear stain is DAPI (blue). Negative control: Unimmunized goat IgG (10ug/ml) followed by Alexa Fluor 488 secondary antibody (2ug/ml).



EB05393 Flow cytometric analysis of paraformaldehyde fixed A431 cells (blue line), permeabilized with 0.5% Triton. Primary incubation 1hr (10ug/ml) followed by Alexa Fluor 488 secondary antibody (1ug/ml). IgG control: Unimmunized goat IgG (black line) followed by Alexa Fluor 488 secondary antibody.



EB05393 (2.5µg/ml) staining of paraffin embedded Human Prostate. Steamed antigen retrieval with citrate buffer pH 6, AP-staining.