



## International Office

### Everest Biotech Ltd

Vector Laboratories, Inc.  
6737 Mowry Ave  
Newark, CA 94560  
United States

Customer Service:

[customerservice@vectorlabs.com](mailto:customerservice@vectorlabs.com)

Technical Service:

[technical@vectorlabs.com](mailto:technical@vectorlabs.com)

Tel: +1 (800) 227-6666

[www.everestbiotech.com](http://www.everestbiotech.com)

**Research Use Only. Not for  
diagnostic or therapeutic use.**

## EB08451 - Goat Anti-AID Antibody

Size: 100µg specific antibody in 200µl



### Target Protein

**Principal Names:** AID, AICDA, activation-induced cytidine deaminase, ARP2, CDA2, HIGM2, activation-induced deaminase, integrated into Burkitt's lymphoma line Ramos

**Official Symbol:** AICDA

**Accession Number(s):** NP\_065712.1

**Human GeneID(s):** [57379](#)

### Immunogen

Peptide with sequence RRKFLYQFKNVR-C, from the N Terminus of the protein sequence according to NP\_065712.1.

Please note the [peptide](#) is available for sale.

### Purification and Storage

Purified from goat serum by ammonium sulphate precipitation followed by antigen affinity chromatography using the immunizing peptide.

Supplied at 0.5 mg/ml in Tris saline, 0.02% sodium azide, pH7.3 with 0.5% bovine serum albumin.

Aliquot and store at -20°C. Minimize freezing and thawing.

### Applications Tested

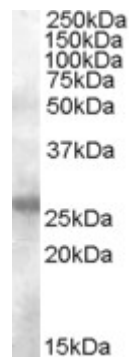
**Peptide ELISA:** antibody detection limit dilution 1:1000.

**Western blot:** Approx 26kDa band observed in Human Tonsil lysates (calculated MW of 24.0kDa according to NP\_065712.1). Recommended concentration: 0.1-0.3µg/ml. Primary incubation was 1 hour.

### Species Reactivity

**Tested:** Human

**Expected from sequence similarity:** Human, Pig, Cow



EB08451 (0.1µg/ml) staining of Human Tonsil lysate (35µg protein in RIPA buffer). Detected by chemiluminescence.