

UK Office

Everest Biotech Ltd

Cherwell Innovation Centre
77 Heyford Park
Upper Heyford
Oxfordshire
OX25 5HD
UK

Enquiries:

info@everestbiotech.com

Sales:

sales@everestbiotech.com

Tech support:

support@everestbiotech.com

Tel: +44 (0)1869 238326

www.everestbiotech.com

**Research Use Only. Not for
diagnostic or therapeutic use.**

EB12621 - Goat Anti-AIFM1 (aa183-195) Antibody

Size: 100µg specific antibody in 200µl



Target Protein

Principal Names: AIFM1, apoptosis-inducing factor, mitochondrion-associated, 1, AIF, CMTX4, COWCK, COXPD6, PDCD8, apoptosis-inducing factor 1, mitochondrial, programmed cell death 8 (apoptosis-inducing factor), striatal apoptosis-inducing factor

Official Symbol: AIFM1

Accession Number(s): NP_004199.1; NP_665811.1; NP_001124319.1

Human GeneID(s): [9131](#)

Important Comments: This antibody is expected to recognize isoform 1 (NP_004199.1), isoform 2 (NP_665811.1) and isoform 5 (NP_001124319).

Immunogen

Peptide with sequence C-DDPNVTKTLRFKQ, from the internal region of the protein sequence according to NP_004199.1; NP_665811.1; NP_001124319.1.

Please note the [peptide](#) is available for sale.

Purification and Storage

Purified from goat serum by ammonium sulphate precipitation followed by antigen affinity chromatography using the immunizing peptide.

Supplied at 0.5 mg/ml in Tris saline, 0.02% sodium azide, pH7.3 with 0.5% bovine serum albumin.

Aliquot and store at -20°C. Minimize freezing and thawing.

Applications Tested

Peptide ELISA: antibody detection limit dilution 1:128000.

Western blot: Approx 70kDa band observed in lysates of cell line Jurkat (calculated MW of 66.9kDa according to NP_004199.1). Recommended concentration: 0.1-0.3µg/ml.

Primary incubation 1 hour at room temperature.

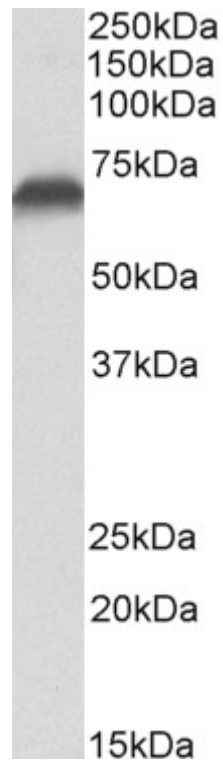
IHC: Paraffin embedded Human Kidney. Recommended concentration: 5-7µg/ml.

Immunofluorescence: Strong expression of the protein seen in the Mitochondria of HeLa and NIH3T3 cells. Recommended concentration: 5-10µg/ml.

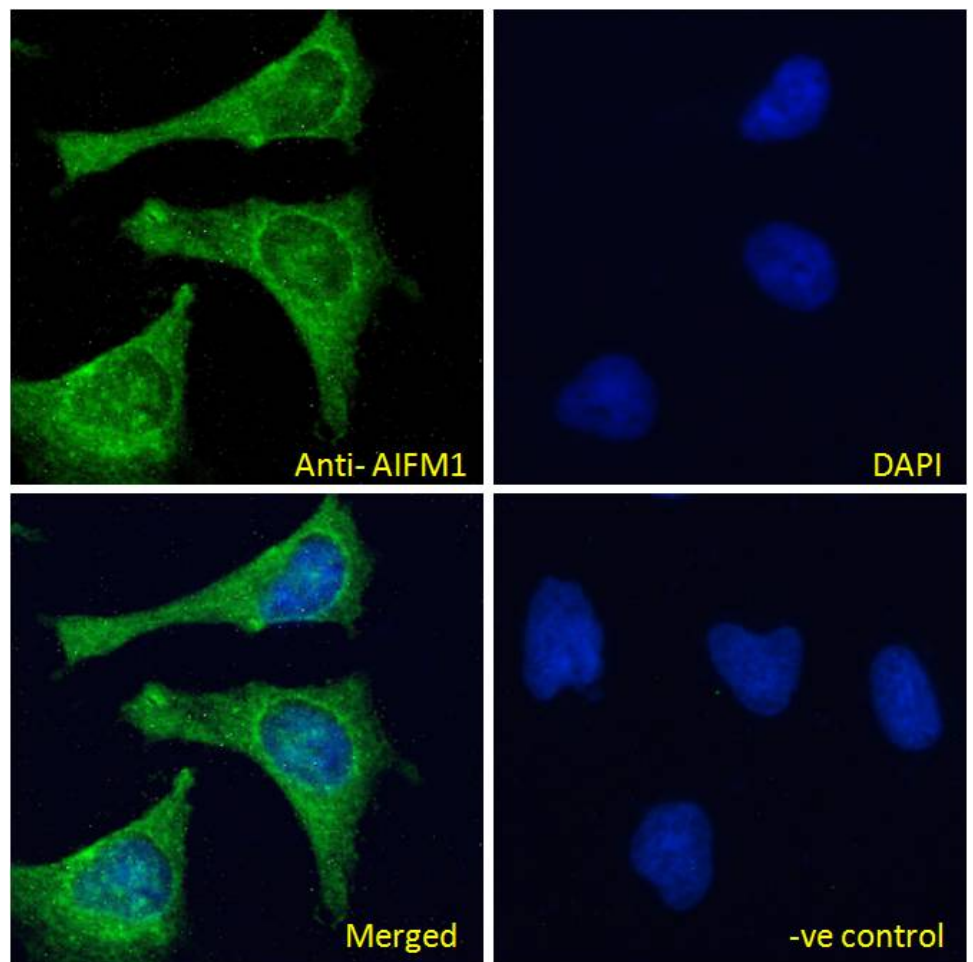
Species Reactivity

Tested: Human, Mouse

Expected from sequence similarity: Human, Cow

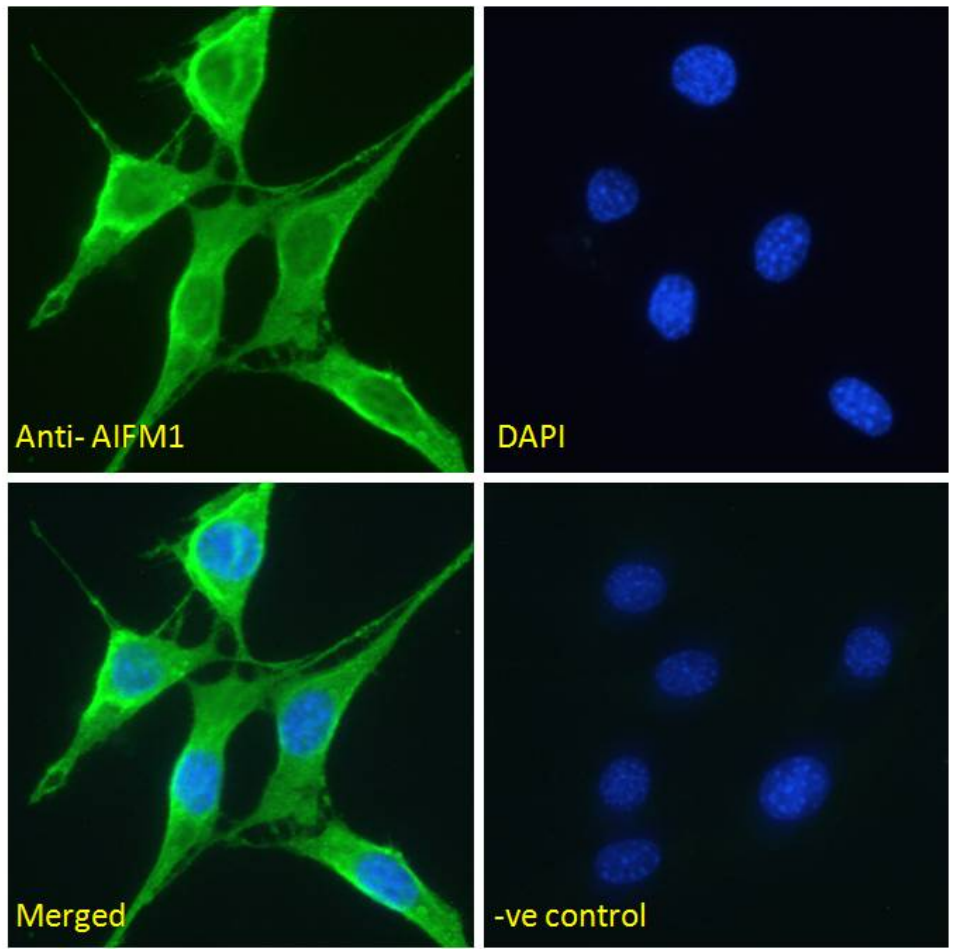


EB12621 (0.1 μ g/ml) staining of Jurkat lysate (35 μ g protein in RIPA buffer). Detected by chemiluminescence.

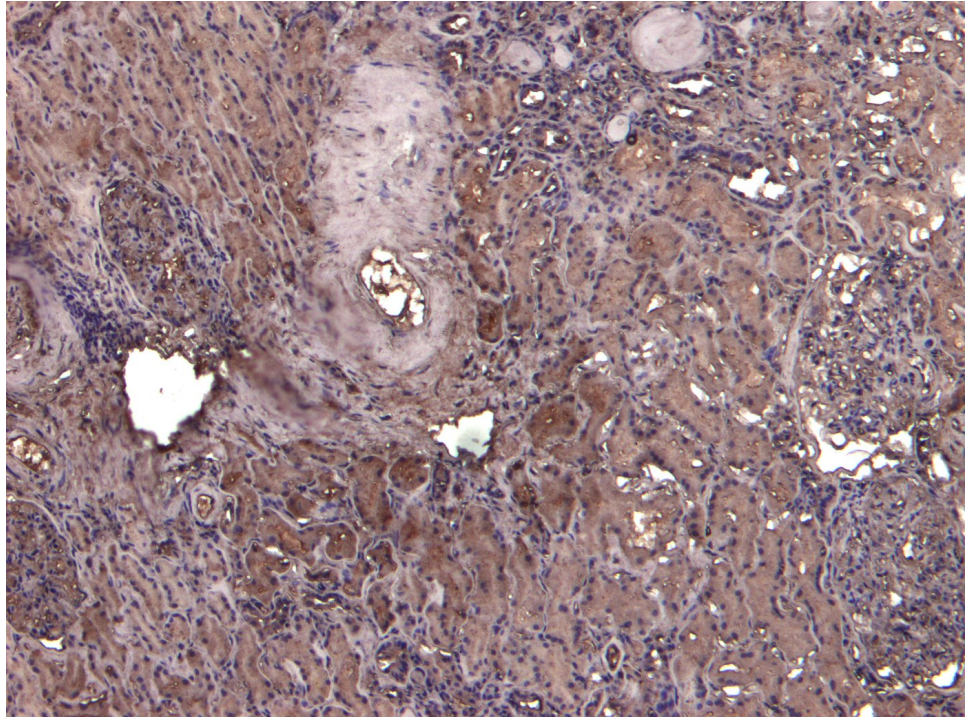


EB12621 Immunofluorescence analysis of paraformaldehyde fixed HeLa cells, permeabilized with 0.15% Triton. Primary incubation 1hr (10 μ g/ml) followed by Alexa Fluor 488 secondary antibody (4 μ g/ml), showing Mitochondrial staining. The nuclear stain is DAPI (blue). Negative control: Unimmunized goat IgG (10 μ g/ml)

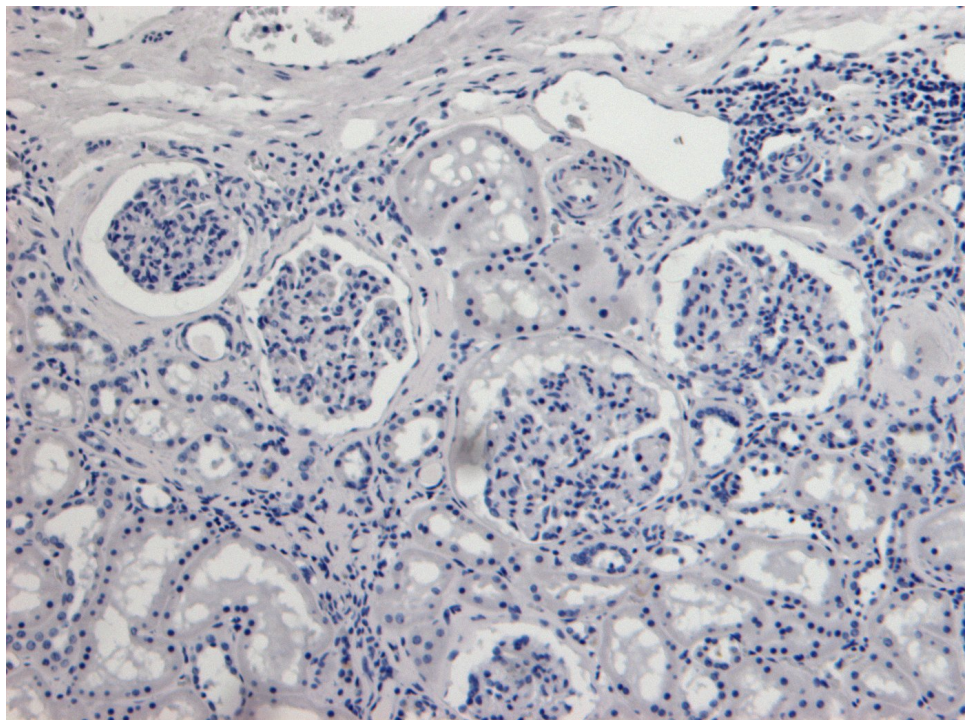
followed by Alexa Fluor 488 secondary antibody (4ug/ml).



EB12621 Immunofluorescence analysis of paraformaldehyde fixed NIH3T3 cells, permeabilized with 0.15% Triton. Primary incubation 1hr (5ug/ml) followed by Alexa Fluor 488 secondary antibody (2ug/ml), showing Mitochondrial staining. The nuclear stain is DAPI (blue). Negative control: Unimmunized goat IgG (5ug/ml) followed by Alexa Fluor 488 secondary antibody (2ug/ml).



EB12621 (5µg/ml) staining of paraffin embedded Human Kidney. Heat induced antigen retrieval with citrate buffer Ph 6, HRP-staining.



EB12621 Negative Control showing staining of paraffin embedded Human Kidney, with no primary antibody.