



UK Office

Everest Biotech Ltd
Cherwell Innovation Centre
77 Heyford Park
Upper Heyford
Oxfordshire
OX25 5HD
UK

Enquiries:

info@everestbiotech.com

Sales:

sales@everestbiotech.com

Tech support:

support@everestbiotech.com

Tel: +44 (0)1869 238326

Fax: +44 (0)1869 238327

US Office

Everest Biotech c/o Abcore
405 Maple Street, Suite A106
Ramona,
CA 92065
USA

Inquiries:

info@everestbiotech.com

Sales:

usasales@everestbiotech.com

Tech support:

support@everestbiotech.com

Tel: 888-320-4628 (toll-free)

Fax: 888-841-9041

www.everestbiotech.com

**Research Use Only. Not for
diagnostic or therapeutic use.**

EB09874 - Goat Anti-AIM2 Antibody

Size: 100µg specific antibody in 200µl



Target Protein

Principal Names: absent in melanoma 2, PYHIN4, AIM2

Official Symbol: AIM2

Accession Number(s): NP_004824.1

Human GeneID(s): [9447](#)

Immunogen

Peptide with sequence C-GEKLQLTSGVHSTIK, from the C Terminus of the protein sequence according to NP_004824.1.

Please note the [peptide](#) is available for sale.

Purification and Storage

Purified from goat serum by ammonium sulphate precipitation followed by antigen affinity chromatography using the immunizing peptide.

Supplied at 0.5 mg/ml in Tris saline, 0.02% sodium azide, pH7.3 with 0.5% bovine serum albumin.

Aliquot and store at -20°C. Minimize freezing and thawing.

Applications Tested

Peptide ELISA: antibody detection limit dilution 1:8000.

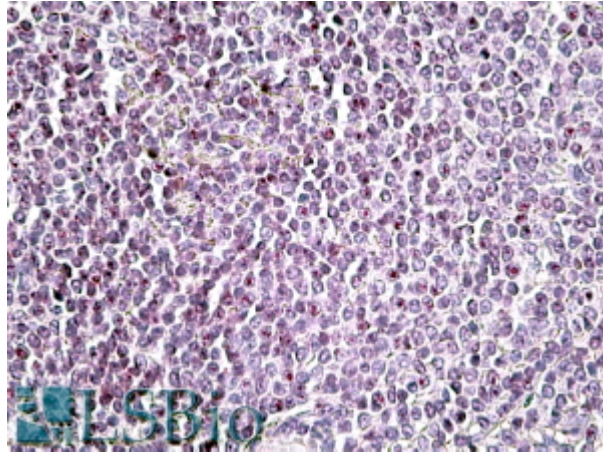
Western blot: Approx 50+55kDa bands observed in lysates of Human WI-38 fibroblast after treatment with interferon beta (calculated MW of 39.0kDa according to NP_004824.1). The observed molecular weight corresponds to earlier findings in literature with different antibodies (Choubey et al., J Interferon Cytokine Res. 2010 Jun;30(6):371-80. PMID: 20187776). Recommended concentration: 1-3µg/ml.

IHC: In paraffin embedded Human Spleen shows nucleolar staining in some splenocytes. Recommended concentration, 4-6µg/ml.

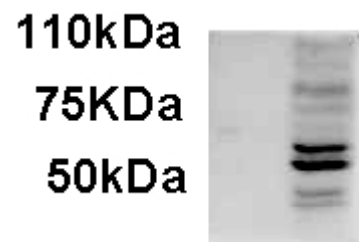
Species Reactivity

Tested: Human

Expected from sequence similarity: Human



EB09874 (3.8 μ g/ml) staining of paraffin embedded Human Spleen. Steamed antigen retrieval with citrate buffer pH 6, AP-staining.



EB09874 (1 μ g/ml) staining of IFNbeta-treated WI-38 lysate (35 μ g protein in RIPA buffer). Primary incubation was 1 hour. Detected by chemiluminescence.