

## International Office

### Everest Biotech Ltd

Vector Laboratories, Inc.  
6737 Mowry Ave  
Newark, CA 94560  
United States

Customer Service:

[customerservice@vectorlabs.com](mailto:customerservice@vectorlabs.com)

Technical Service:

[technical@vectorlabs.com](mailto:technical@vectorlabs.com)

Tel: +1 (800) 227-6666

[www.everestbiotech.com](http://www.everestbiotech.com)

**Research Use Only. Not for  
diagnostic or therapeutic use.**

## EB11512 - Goat Anti-AIMP1 / SCYE1 (aa137-149) Antibody

Size: 100µg specific antibody in 200µl



### Target Protein

**Principal Names:** AIMP1, aminoacyl tRNA synthase complex-interacting multifunctional protein 1, aminoacyl tRNA synthetase complex-interacting multifunctional protein 1, ARS-interacting multifunctional protein 1, EMAP2, EMAPII, endothelial monocyte-activating polypeptide 2, endothelial-monocyte activating polypeptide II, HLD3, multisynthase complex auxiliary component p43, multisynthetase complex auxiliary component p43, OTTHUMP00000161877, OTTHUMP00000161878, OTTHUMP00000219673, p43, SCYE1, small inducible cytokine subfamily E, member 1 (endothelial monocyte-activating)

**Official Symbol:** AIMP1

**Accession Number(s):** NP\_004748.2; NP\_001135888.1

**Human GeneID(s):** [9255](#)

**Important Comments:** This antibody is expected to recognize both reported isoforms (NP\_004748.2; NP\_001135888.1). Reported variants represent identical protein: NP\_004748.2, NP\_001135887.1

### Immunogen

Peptide with sequence C-KQQSIAGSADSKP, from the internal region of the protein sequence according to NP\_004748.2; NP\_001135888.1.

Please note the [peptide](#) is available for sale.

### Purification and Storage

Purified from goat serum by ammonium sulphate precipitation followed by antigen affinity chromatography using the immunizing peptide.

Supplied at 0.5 mg/ml in Tris saline, 0.02% sodium azide, pH7.3 with 0.5% bovine serum albumin.

Aliquot and store at -20°C. Minimize freezing and thawing.

### Applications Tested

**Peptide ELISA:** antibody detection limit dilution 1:32000.

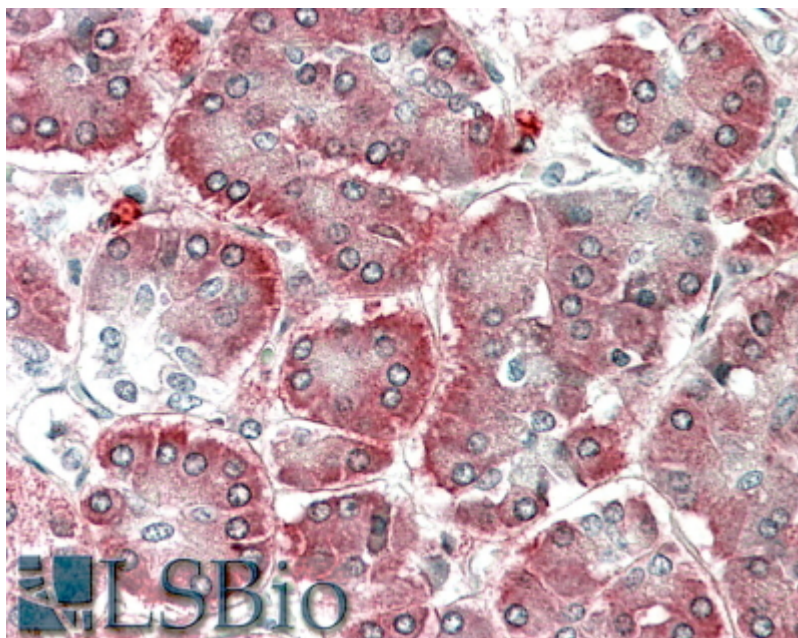
**Western blot:** Approx 37kDa band observed in Human Lymph Node and Uterus lysates (calculated MW of 37.0kDa according to NP\_001135887.1). Recommended concentration: 0.1-0.3µg/ml.

**IHC:** In paraffin embedded Human Pancreas shows staining in the cytoplasm towards the alpha cells periphery. Recommended concentration, 5-10µg/ml.

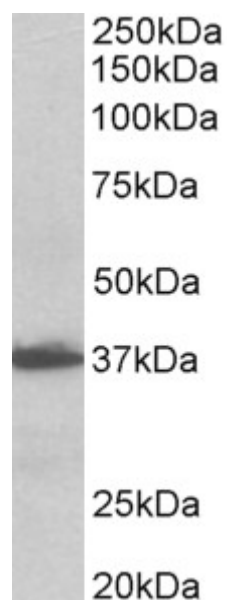
### Species Reactivity

**Tested:** Human

**Expected from sequence similarity:** Human, Dog, Pig



EB11512 (5 $\mu$ g/ml) staining of paraffin embedded Human Pancreas. Steamed antigen retrieval with citrate buffer pH 6, AP-staining.



EB11512 (0.1 $\mu$ g/ml) staining of Human Lymph Node lysate (35 $\mu$ g protein in RIPA buffer). Primary incubation was 1 hour. Detected by chemiluminescence.