



## UK Office

### Everest Biotech Ltd

Cherwell Innovation Centre  
77 Heyford Park  
Upper Heyford  
Oxfordshire  
OX25 5HD  
UK

Enquiries:

[info@everestbiotech.com](mailto:info@everestbiotech.com)

Sales:

[sales@everestbiotech.com](mailto:sales@everestbiotech.com)

Tech support:

[support@everestbiotech.com](mailto:support@everestbiotech.com)

Tel: +44 (0)1869 238326

[www.everestbiotech.com](http://www.everestbiotech.com)

**Research Use Only. Not for  
diagnostic or therapeutic use.**

## EB06333 - Goat Anti-AKAP10 / D-AKAP2 Antibody

Size: 100µg specific antibody in 200µl



### Target Protein

**Principal Names:** AKAP10, PRKA10, D-AKAP2, MGC:9414, A kinase (PRKA) anchor protein 10, dual specificity A-Kinase anchoring protein 2, A-kinase anchor protein 10, dual-specificity A-kinase anchoring protein 2, mitochondrial A kinase PPKA anchor protein 10, protein kinase A anchoring protein 10

**Official Symbol:** AKAP10

**Accession Number(s):** NP\_009133.2

**Human GeneID(s):** [11216](#)

**Non-Human GeneID(s):** 56697 (mouse)

### Immunogen

Peptide with sequence C-AQYDQPLEKSTKL, from the C Terminus of the protein sequence according to NP\_009133.2.

Please note the [peptide](#) is available for sale.

### Purification and Storage

Purified from goat serum by ammonium sulphate precipitation followed by antigen affinity chromatography using the immunizing peptide.

Supplied at 0.5 mg/ml in Tris saline, 0.02% sodium azide, pH7.3 with 0.5% bovine serum albumin.

Aliquot and store at -20°C. Minimize freezing and thawing.

### Applications Tested

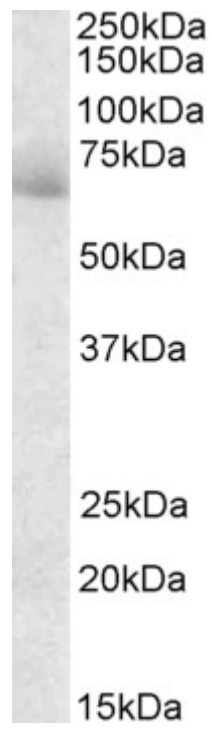
**Peptide ELISA:** antibody detection limit dilution 1:16000.

**Western blot:** Approx 65kDa band observed in Human Testis lysate (Calculated MW of 73.8kDa according to NP\_009133.2) Recommended concentration: 0.3-1.0ug/ml

### Species Reactivity

**Tested:** Human

**Expected from sequence similarity:** Human, Mouse, Rat, Dog



EB06333 (0.3ug/ml) staining of Human Testis lysate (35ug protein in RIPA buffer. Primary incubation was 1 hour. Deected by chemiluminescence.