



UK Office

Everest Biotech Ltd

Cherwell Innovation Centre
77 Heyford Park
Upper Heyford
Oxfordshire
OX25 5HD
UK

Enquiries:

info@everestbiotech.com

Sales:

sales@everestbiotech.com

Tech support:

support@everestbiotech.com

Tel: +44 (0)1869 238326

Fax: +44 (0)1869 238327

US Office

Everest Biotech c/o Abcore

405 Maple Street, Suite A106
Ramona,
CA 92065
USA

Inquiries:

info@everestbiotech.com

Sales:

usasales@everestbiotech.com

Tech support:

support@everestbiotech.com

Tel: 888-320-4628 (toll-free)

Fax: 888-841-9041

www.everestbiotech.com

**Research Use Only. Not for
diagnostic or therapeutic use.**

EB06333 - Goat Anti-AKAP10 / D-AKAP2 Antibody

Size: 100µg specific antibody in 200µl



Target Protein

Principal Names: AKAP10, PRKA10, D-AKAP2, MGC:9414, A kinase (PRKA) anchor protein 10, dual specificity A-Kinase anchoring protein 2, A-kinase anchor protein 10, dual-specificity A-kinase anchoring protein 2, mitochondrial A kinase PPKA anchor protein 10, protein kinase A anchoring protein 10

Official Symbol: AKAP10

Accession Number(s): NP_009133.2

Human GeneID(s): [11216](#)

Non-Human GeneID(s): 56697 (mouse)

Immunogen

Peptide with sequence C-AQYDQPLEKSTKL, from the C Terminus of the protein sequence according to NP_009133.2.

Please note the [peptide](#) is available for sale.

Purification and Storage

Purified from goat serum by ammonium sulphate precipitation followed by antigen affinity chromatography using the immunizing peptide.

Supplied at 0.5 mg/ml in Tris saline, 0.02% sodium azide, pH7.3 with 0.5% bovine serum albumin.

Aliquot and store at -20°C. Minimize freezing and thawing.

Applications Tested

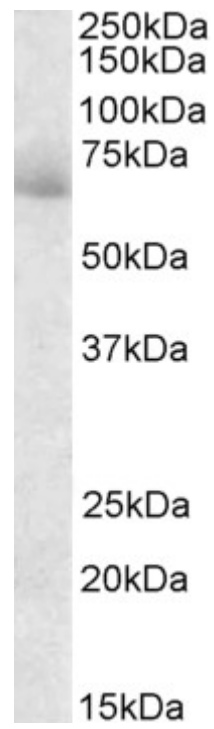
Peptide ELISA: antibody detection limit dilution 1:16000.

Western blot: Approx 65kDa band observed in Human Testis lysate (Calculated MW of 73.8kDa according to NP_009133.2) Recommended concentration: 0.3-1.0ug/ml

Species Reactivity

Tested: Human

Expected from sequence similarity: Human, Mouse, Rat, Dog



EB06333 (0.3ug/ml) staining of Human Testis lysate (35ug protein in RIPA buffer. Primary incubation was 1 hour. Deected by chemiluminescence.