



UK Office

Everest Biotech Ltd

Cherwell Innovation Centre
77 Heyford Park
Upper Heyford
Oxfordshire
OX25 5HD
UK

Enquiries:

info@everestbiotech.com

Sales:

sales@everestbiotech.com

Tech support:

support@everestbiotech.com

Tel: +44 (0)1869 238326

Fax: +44 (0)1869 238327

US Office

Everest Biotech c/o Abcore

405 Maple Street, Suite A106
Ramona,
CA 92065
USA

Inquiries:

info@everestbiotech.com

Sales:

usasales@everestbiotech.com

Tech support:

support@everestbiotech.com

Tel: 888-320-4628 (toll-free)

Fax: 888-841-9041

www.everestbiotech.com

**Research Use Only. Not for
diagnostic or therapeutic use.**

EB06311 - Goat Anti-AKAP3 / SOB1 Antibody

Size: 100µg specific antibody in 200µl



Target Protein

Principal Names: AKAP3, SOB1, FSP95, PRKA3, AKAP110, A kinase (PRKA) anchor protein 3, fibrousheathin 1, sperm oocyte binding protein 1, CT82, A-kinase anchor protein 3, A-kinase anchor protein, 110kDa, Fibrous Sheath Protein of 95 kDa, cancer/testis antigen 82, fibrous sheath protein, 95kDa, protein kinase A anchoring protein 3

Official Symbol: AKAP3

Accession Number(s): NP_006413.2

Human GeneID(s): [10566](#)

Immunogen

Peptide with sequence C-TPLQLLDWLMVNL, from the C Terminus of the protein sequence according to NP_006413.2.

Please note the [peptide](#) is available for sale.

Purification and Storage

Purified from goat serum by ammonium sulphate precipitation followed by antigen affinity chromatography using the immunizing peptide.

Supplied at 0.5 mg/ml in Tris saline, 0.02% sodium azide, pH7.3 with 0.5% bovine serum albumin.

Aliquot and store at -20°C. Minimize freezing and thawing.

Applications Tested

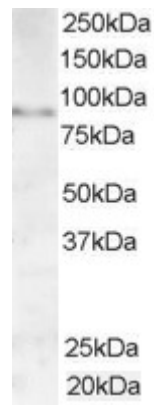
Peptide ELISA: antibody detection limit dilution 1:32000.

Western blot: Approx 90kDa band observed in Human Testis lysates (calculated MW of 95kDa according to NP_006413). Recommended concentration: 1-3µg/ml.

Species Reactivity

Tested: Human

Expected from sequence similarity: Human, Mouse, Rat, Dog, Pig, Cow



EB06311 (1µg/ml) staining of Human Testis lysate (35µg protein in RIPA buffer). Primary incubation was 1 hour.
Detected by chemiluminescence.